



Cyclin M2 Polyclonal Antibody

Catalog No	BYab-16734
Isotype	IgG
Reactivity	Human;Mouse;Rat
Applications	WB;ELISA
Gene Name	CNNM2
Protein Name	Metal transporter CNNM2
Immunogen	The antiserum was produced against synthesized peptide derived from human CNNM2. AA range:571-620
Specificity	Cyclin M2 Polyclonal Antibody detects endogenous levels of Cyclin M2 protein.
Formulation	Liquid in PBS containing 50% glycerol, 0.5% BSA and 0.02% sodium azide.
Source	Polyclonal, Rabbit,IgG
Purification	The antibody was affinity-purified from rabbit antiserum by affinity-chromatography using epitope-specific immunogen.
Dilution	Western Blot: 1/500 - 1/2000. ELISA: 1/10000. Not yet tested in other applications.
Concentration	1 mg/ml
Purity	≥90%
Storage Stability	-20°C/1 year
Synonyms	CNNM2; ACDP2; Metal transporter CNNM2; Ancient conserved domain-containing protein 2; Cyclin-M2
Observed Band	100kD
Cell Pathway	Cell membrane ; Multi-pass membrane protein .
Tissue Specificity	Widely expressed. Expressed at higher level in brain, kidney and placenta, while it is weakly expressed in skeletal muscle. In the kidney, it is expressed in the distal convoluted tubule and the thick ascending limb of Henle loop.
Function	function:Divalent metal cation transporter. Mediates transport of divalent metal cations in an order of Mg(2+) > Co(2+) > Mn(2+) > Sr(2+) > Ba(2+) > Cu(2+) > Fe(2+).,miscellaneous:Shares weak sequence similarity with the cyclin family, explaining its name. However it has no cyclin-like function in vivo.,similarity:Belongs to the ACDP family.,similarity:Contains 2 CBS domains.,tissue specificity:Widely expressed. Expressed at higher level in brain, kidney and placenta, while it is weakly expressed in skeletal muscle.,

Nanjing BYabscience technology Co.,Ltd



Background

cyclin and CBS domain divalent metal cation transport mediator 2(CNNM2) Homo sapiens This gene encodes a member of the ancient conserved domain containing protein family. Members of this protein family contain a cyclin box motif and have structural similarity to the cyclins. The encoded protein may play an important role in magnesium homeostasis by mediating the epithelial transport and renal reabsorption of Mg²⁺. Mutations in this gene are associated with renal hypomagnesemia. Alternatively spliced transcript variants encoding multiple isoforms have been observed for this gene. [provided by RefSeq, Dec 2011],

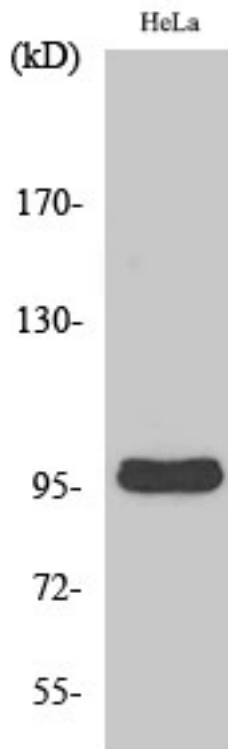
matters needing attention

Avoid repeated freezing and thawing!

Usage suggestions

This product can be used in immunological reaction related experiments. For more information, please consult technical personnel.

Products Images



Western Blot analysis of various cells using Cyclin M2 Polyclonal Antibody