



Cyclin G Polyclonal Antibody

Catalog No	BYab-16731
Isotype	IgG
Reactivity	Human;Mouse;Rat
Applications	WB;IHC;IF;ELISA
Gene Name	CCNG1
Protein Name	Cyclin-G1
Immunogen	The antiserum was produced against synthesized peptide derived from human Cyclin G. AA range:161-210
Specificity	Cyclin G Polyclonal Antibody detects endogenous levels of Cyclin G protein.
Formulation	Liquid in PBS containing 50% glycerol, 0.5% BSA and 0.02% sodium azide.
Source	Polyclonal, Rabbit,IgG
Purification	The antibody was affinity-purified from rabbit antiserum by affinity-chromatography using epitope-specific immunogen.
Dilution	WB: 1/500 - 1/2000. IHC: 1/100 - 1/300. ELISA: 1/40000.. IF 1:50-200
Concentration	1 mg/ml
Purity	≥90%
Storage Stability	-20°C/1 year
Synonyms	CCNG1; CCNG; CYCG1; Cyclin-G1; Cyclin-G
Observed Band	29kD
Cell Pathway	Nucleus . DNA replication foci after DNA damage.
Tissue Specificity	High levels in skeletal muscle, ovary, kidney and colon.
Function	developmental stage:Very low levels in normal cells during G1 phase, which increase as cells enter the S phase and stay high throughout the S and G2/M phases. In breast cancer cells consistent high levels are found throughout the cell cycle.,function:May play a role in growth regulation. Is associated with G2/M phase arrest in response to DNA damage. May be an intermediate by which p53 mediates its role as an inhibitor of cellular proliferation.,induction:Activated in breast and prostate cancer cells. Activated by actinomycin-D induced DNA damage.,similarity:Belongs to the cyclin family. Cyclin G subfamily.,subcellular location:DNA replication foci after DNA damage.,tissue specificity:High levels in skeletal muscle, ovary, kidney and colon.,

Nanjing BYabscience technology Co.,Ltd



Background

The eukaryotic cell cycle is governed by cyclin-dependent protein kinases (CDKs) whose activities are regulated by cyclins and CDK inhibitors. The protein encoded by this gene is a member of the cyclin family and contains the cyclin box. The encoded protein lacks the protein destabilizing (PEST) sequence that is present in other family members. Transcriptional activation of this gene can be induced by tumor protein p53. Two transcript variants encoding the same protein have been identified for this gene. [provided by RefSeq, Jul 2008],

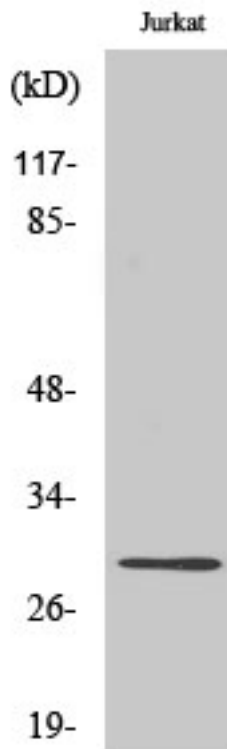
matters needing attention

Avoid repeated freezing and thawing!

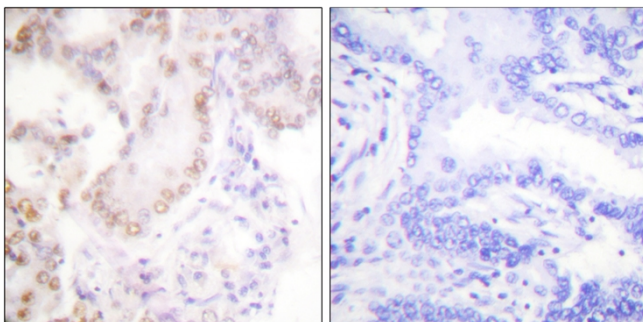
Usage suggestions

This product can be used in immunological reaction related experiments. For more information, please consult technical personnel.

Products Images



Western Blot analysis of various cells using Cyclin G Polyclonal Antibody diluted at 1:500 cells nucleus extracted by Minute TM Cytoplasmic and Nuclear Fractionation kit (SC-003, Inventbiotech, MN, USA).



Immunohistochemistry analysis of paraffin-embedded human lung carcinoma tissue, using Cyclin G Antibody. The picture on the right is blocked with the synthesized peptide.

Nanjing BYabscience technology Co.,Ltd

