



Cks2 Polyclonal Antibody

Catalog No	BYab-16713
Isotype	IgG
Reactivity	Human;Mouse
Applications	IHC;IF;ELISA
Gene Name	CKS2
Protein Name	Cyclin-dependent kinases regulatory subunit 2
Immunogen	The antiserum was produced against synthesized peptide derived from human CKS2. AA range:1-50
Specificity	Cks2 Polyclonal Antibody detects endogenous levels of Cks2 protein.
Formulation	Liquid in PBS containing 50% glycerol, 0.5% BSA and 0.02% sodium azide.
Source	Polyclonal, Rabbit,IgG
Purification	The antibody was affinity-purified from rabbit antiserum by affinity-chromatography using epitope-specific immunogen.
Dilution	IHC: 1/100 - 1/300. ELISA: 1/20000.. IF 1:50-200
Concentration	1 mg/ml
Purity	≥90%
Storage Stability	-20°C/1 year
Synonyms	CKS2; Cyclin-dependent kinases regulatory subunit 2; CKS-2
Observed Band	
Cell Pathway	cyclin-dependent protein kinase holoenzyme complex,SCF ubiquitin ligase complex,
Tissue Specificity	Lung,
Function	function:Binds to the catalytic subunit of the cyclin dependent kinases and is essential for their biological function.,similarity:Belongs to the CKS family.,subunit:Forms an homohexamer that can probably bind six kinase subunits.,
Background	CDC28 protein kinase regulatory subunit 2(CKS2) Homo sapiens CKS2 protein binds to the catalytic subunit of the cyclin dependent kinases and is essential for their biological function. The CKS2 mRNA is found to be expressed in different patterns through the cell cycle in HeLa cells, which reflects specialized role for the encoded protein. [provided by RefSeq, Jul 2008],

Nanjing BYabscience technology Co.,Ltd



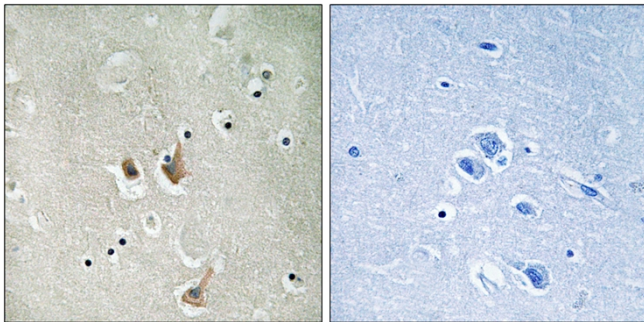
matters needing attention

Avoid repeated freezing and thawing!

Usage suggestions

This product can be used in immunological reaction related experiments. For more information, please consult technical personnel.

Products Images



Immunohistochemistry analysis of paraffin-embedded human brain tissue, using CKS2 Antibody. The picture on the right is blocked with the synthesized peptide.