



# CDC46 Polyclonal Antibody

<b>Catalog No</b>	BYab-16686
<b>Isotype</b>	IgG
<b>Reactivity</b>	Human;Mouse;Rat
<b>Applications</b>	WB;IHC;IF;ELISA
<b>Gene Name</b>	MCM5
<b>Protein Name</b>	DNA replication licensing factor MCM5
<b>Immunogen</b>	The antiserum was produced against synthesized peptide derived from human MCM5. AA range:21-70
<b>Specificity</b>	CDC46 Polyclonal Antibody detects endogenous levels of CDC46 protein.
<b>Formulation</b>	Liquid in PBS containing 50% glycerol, 0.5% BSA and 0.02% sodium azide.
<b>Source</b>	Polyclonal, Rabbit,IgG
<b>Purification</b>	The antibody was affinity-purified from rabbit antiserum by affinity-chromatography using epitope-specific immunogen.
<b>Dilution</b>	Western Blot: 1/500 - 1/2000. Immunohistochemistry: 1/100 - 1/300. Immunofluorescence: 1/200 - 1/1000. ELISA: 1/20000. Not yet tested in other applications.
<b>Concentration</b>	1 mg/ml
<b>Purity</b>	≥90%
<b>Storage Stability</b>	-20°C/1 year
<b>Synonyms</b>	MCM5; CDC46; DNA replication licensing factor MCM5; CDC46 homolog; P1-CDC46
<b>Observed Band</b>	90kD
<b>Cell Pathway</b>	Nucleus . Chromosome . Cytoplasm, cytosol . Associated with chromatin before the formation of nuclei and detaches from it as DNA replication progresses. .
<b>Tissue Specificity</b>	Cervix,Cervix carcinoma,Lymph,Placenta,Spleen,Thymus,Tongue
<b>Function</b>	similarity:Belongs to the MCM family.,similarity:Contains 1 MCM domain.,
<b>Background</b>	The protein encoded by this gene is structurally very similar to the CDC46 protein from <i>S. cerevisiae</i> , a protein involved in the initiation of DNA replication. The encoded protein is a member of the MCM family of chromatin-binding proteins and can interact with at least two other members of this family. The encoded protein is upregulated in the transition from the G0 to G1/S phase of the cell cycle and may actively participate in cell cycle regulation. [provided by

Nanjing BYabscience technology Co.,Ltd



RefSeq, Jul 2008],

**matters needing attention**

Avoid repeated freezing and thawing!

**Usage suggestions**

This product can be used in immunological reaction related experiments. For more information, please consult technical personnel.

Nanjing BYabscience technology Co.,Ltd

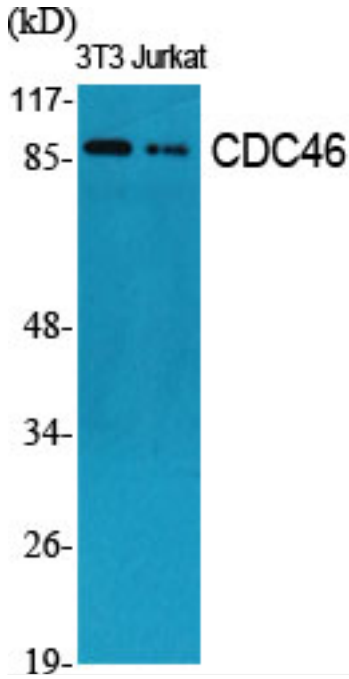
网址: [www.njbybio.com](http://www.njbybio.com)

官方热线: 025-5229-8998

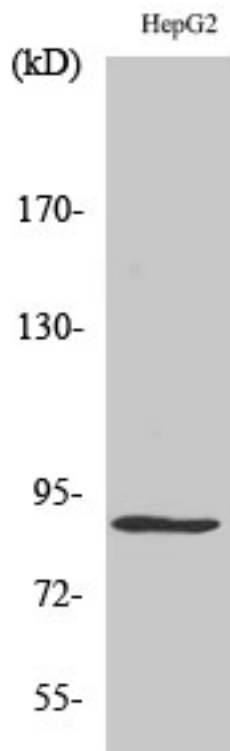
监督电话: 15950492658



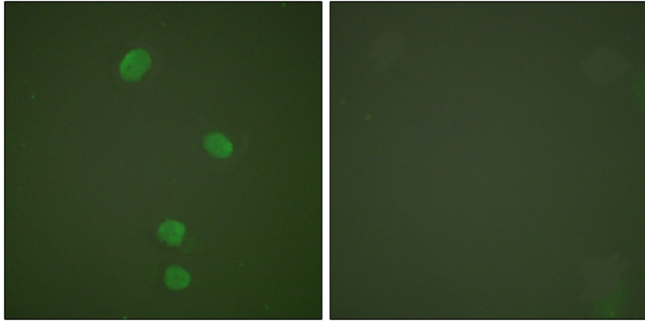
## Products Images



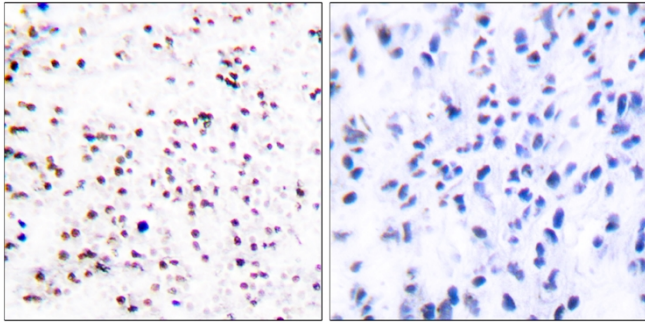
Western Blot analysis of various cells using CDC46 Polyclonal Antibody cells nucleus extracted by Minute TM Cytoplasmic and Nuclear Fractionation kit (SC-003, Inventbiotech, MN, USA).



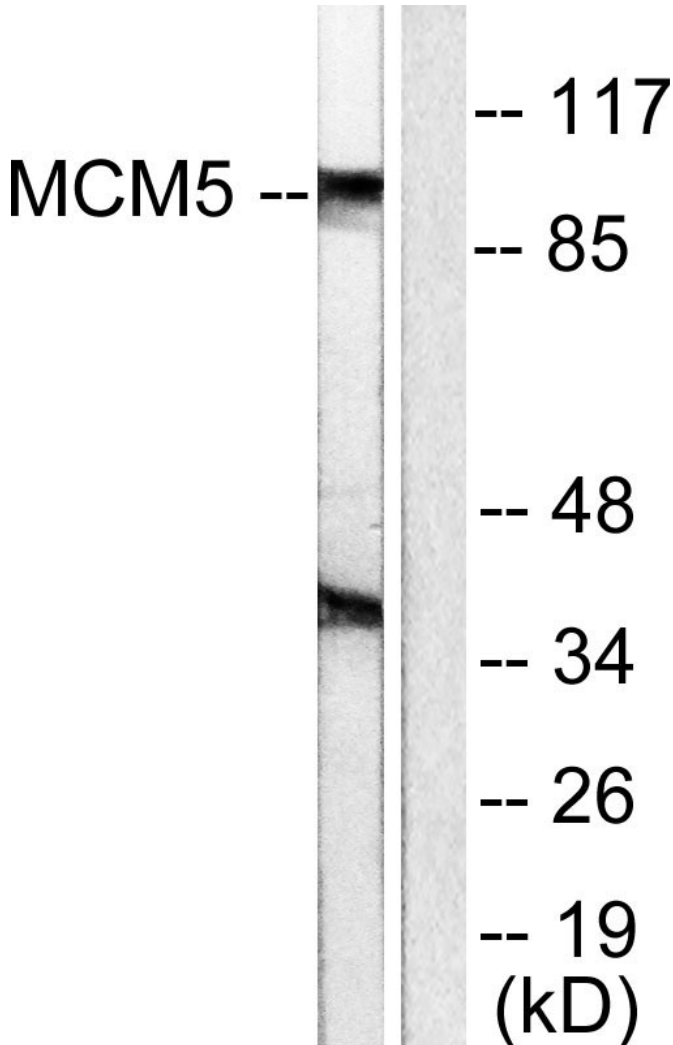
Western Blot analysis of HepG2 cells using CDC46 Polyclonal Antibody cells nucleus extracted by Minute TM Cytoplasmic and Nuclear Fractionation kit (SC-003, Inventbiotech, MN, USA).



Immunofluorescence analysis of HepG2 cells, using MCM5 Antibody. The picture on the right is blocked with the synthesized peptide.



Immunohistochemistry analysis of paraffin-embedded human tonsil tissue, using MCM5 Antibody. The picture on the right is blocked with the synthesized peptide.



Western blot analysis of lysates from HepG2 cells, using MCM5 Antibody. The lane on the right is blocked with the synthesized peptide.