



Cdc37L1 Polyclonal Antibody

Catalog No	BYab-16684
Isotype	IgG
Reactivity	Human;Rat
Applications	WB;ELISA
Gene Name	CDC37L1
Protein Name	Hsp90 co-chaperone Cdc37-like 1
Immunogen	Synthesized peptide derived from Cdc37L1 . at AA range: 80-160
Specificity	Cdc37L1 Polyclonal Antibody detects endogenous levels of Cdc37L1 protein.
Formulation	Liquid in PBS containing 50% glycerol, 0.5% BSA and 0.02% sodium azide.
Source	Polyclonal, Rabbit,IgG
Purification	The antibody was affinity-purified from rabbit antiserum by affinity-chromatography using epitope-specific immunogen.
Dilution	Western Blot: 1/500 - 1/2000. ELISA: 1/40000. Not yet tested in other applications.
Concentration	1 mg/ml
Purity	≥90%
Storage Stability	-20°C/1 year
Synonyms	CDC37L1; CDC37B; HARC; Hsp90 co-chaperone Cdc37-like 1; Hsp90-associating relative of Cdc37
Observed Band	38kD
Cell Pathway	Cytoplasm .
Tissue Specificity	Expressed in brain, heart, kidney, liver, placenta and skeletal muscle.
Function	function:Co-chaperone that binds to numerous proteins and promotes their interaction with Hsp70 and Hsp90.,sequence caution:Translated as Cys.,similarity:Belongs to the CDC37 family.,subunit:Self-associates. Forms complexes with Hsp70 and Hsp90. Interacts with CDC37, FKBP4, PPID and STIP1.,tissue specificity:Expressed in brain, heart, kidney, liver, placenta and skeletal muscle.,
Background	CDC37L1 is a cytoplasmic phosphoprotein that exists in complex with HSP90 (HSPCA; MIM 140571) as well as several other proteins involved in HSP90-mediated protein folding (Scholz et al., 2001 [PubMed 11413142]).[supplied by OMIM, Mar 2008],

Nanjing BYabscience technology Co.,Ltd



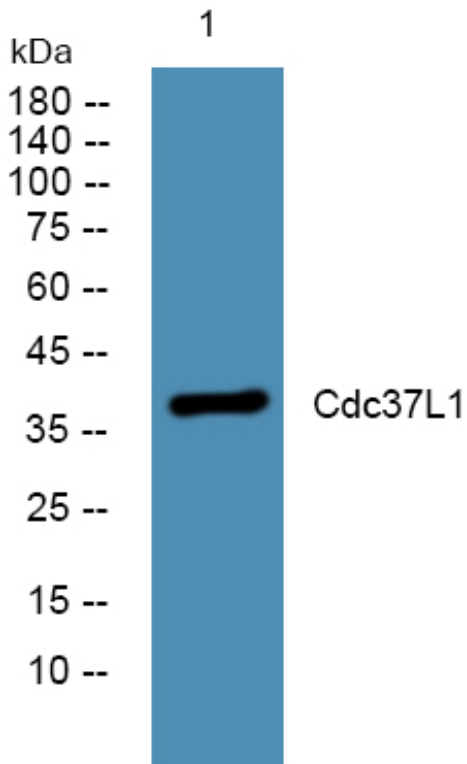
matters needing attention

Avoid repeated freezing and thawing!

Usage suggestions

This product can be used in immunological reaction related experiments. For more information, please consult technical personnel.

Products Images



Nanjing BYabscience technology Co.,Ltd

网址: www.njbybio.com

官方热线: 025-5229-8998

监督电话: 15950492658