



Cdc37 Polyclonal Antibody

Catalog No	BYab-16683
Isotype	IgG
Reactivity	Human;Mouse;Rat;Monkey
Applications	WB;IHC;IF;ELISA
Gene Name	CDC37
Protein Name	Hsp90 co-chaperone Cdc37
Immunogen	The antiserum was produced against synthesized peptide derived from human CDC37. AA range:1-50
Specificity	Cdc37 Polyclonal Antibody detects endogenous levels of Cdc37 protein.
Formulation	Liquid in PBS containing 50% glycerol, 0.5% BSA and 0.02% sodium azide.
Source	Polyclonal, Rabbit,IgG
Purification	The antibody was affinity-purified from rabbit antiserum by affinity-chromatography using epitope-specific immunogen.
Dilution	Western Blot: 1/500 - 1/2000. Immunohistochemistry: 1/100 - 1/300. Immunofluorescence: 1/200 - 1/1000. ELISA: 1/20000. Not yet tested in other applications.
Concentration	1 mg/ml
Purity	≥90%
Storage Stability	-20°C/1 year
Synonyms	CDC37; CDC37A; Hsp90 co-chaperone Cdc37; Hsp90 chaperone protein kinase-targeting subunit; p50Cdc37
Observed Band	44kD
Cell Pathway	Cytoplasm .
Tissue Specificity	Lymph,Placenta,
Function	function:Co-chaperone that binds to numerous kinases and promotes their interaction with the Hsp90 complex, resulting in stabilization and promotion of their activity.,PTM:Constitutively sumoylated by UBE2L.,similarity:Belongs to the CDC37 family.,subunit:Forms a complex with Hsp90. Interacts with AR, CDK4, CDK6, EIF2AK1 and RB1.,
Background	The protein encoded by this gene is highly similar to Cdc 37, a cell division cycle control protein of <i>Sacchomyces cerevisiae</i> . This protein is a molecular chaperone with specific function in cell signal transduction. It has been shown to form

Nanjing BYabscience technology Co.,Ltd



complex with Hsp90 and a variety of protein kinases including CDK4, CDK6, SRC, RAF-1, MOK, as well as eIF2 alpha kinases. It is thought to play a critical role in directing Hsp90 to its target kinases. [provided by RefSeq, Jul 2008],

matters needing attention

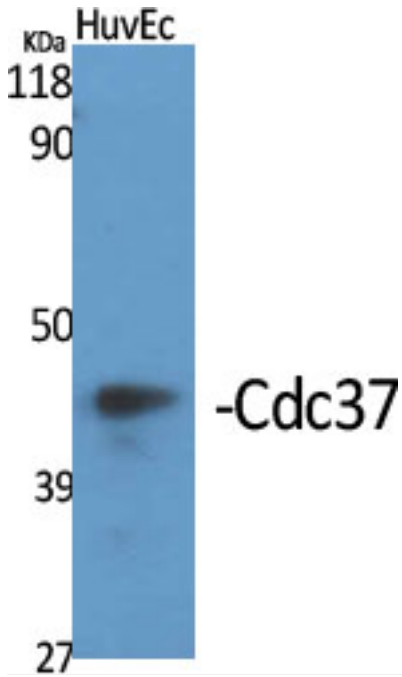
Avoid repeated freezing and thawing!

Usage suggestions

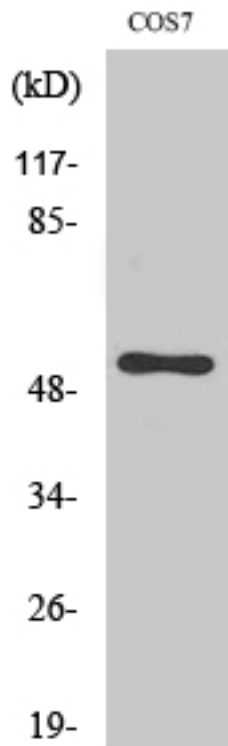
This product can be used in immunological reaction related experiments. For more information, please consult technical personnel.



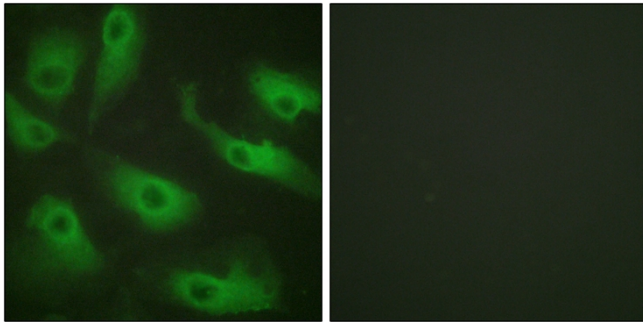
Products Images



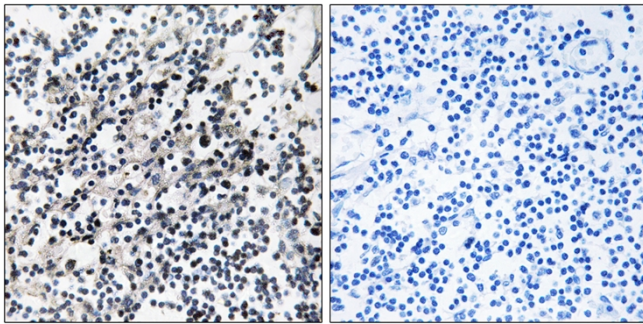
Western Blot analysis of various cells using Cdc37 Polyclonal Antibody



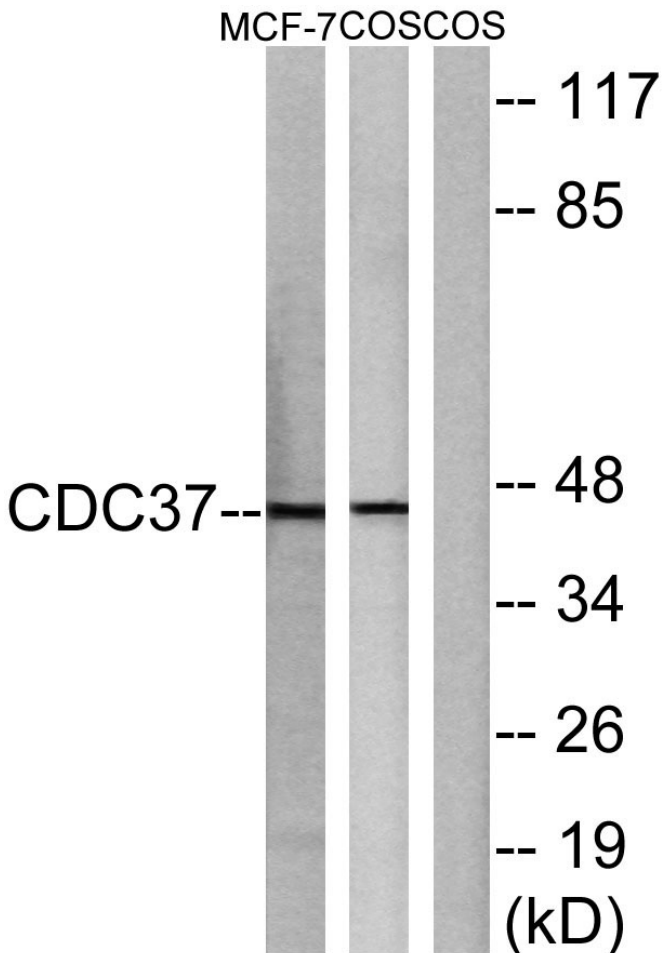
Western Blot analysis of MCF7 cells using Cdc37 Polyclonal Antibody



Immunofluorescence analysis of HeLa cells, using CDC37 Antibody. The picture on the right is blocked with the synthesized peptide.



Immunohistochemistry analysis of paraffin-embedded human placenta tissue, using CDC37 Antibody. The picture on the right is blocked with the synthesized peptide.



Western blot analysis of lysates from MCF-7 and COS7 cells, using CDC37 Antibody. The lane on the right is blocked with the synthesized peptide.