



Cdc27 Polyclonal Antibody

Catalog No	BYab-16682
Isotype	IgG
Reactivity	Human;Mouse;Rat
Applications	WB;IHC;IF;ELISA
Gene Name	CDC27
Protein Name	Cell division cycle protein 27 homolog
Immunogen	The antiserum was produced against synthesized peptide derived from human H-NUC. AA range:361-410
Specificity	Cdc27 Polyclonal Antibody detects endogenous levels of Cdc27 protein.
Formulation	Liquid in PBS containing 50% glycerol, 0.5% BSA and 0.02% sodium azide.
Source	Polyclonal, Rabbit,IgG
Purification	The antibody was affinity-purified from rabbit antiserum by affinity-chromatography using epitope-specific immunogen.
Dilution	WB: 1/500 - 1/2000. IHC: 1/100 - 1/300. ELISA: 1/5000.. IF 1:50-200
Concentration	1 mg/ml
Purity	≥90%
Storage Stability	-20°C/1 year
Synonyms	CDC27; ANAPC3; D0S1430E; D17S978E; Cell division cycle protein 27 homolog; Anaphase-promoting complex subunit 3; APC3; CDC27 homolog; CDC27Hs; H-NUC
Observed Band	92kD
Cell Pathway	Nucleus . Cytoplasm, cytoskeleton, spindle .
Tissue Specificity	Epithelium,Uterus,
Function	PTM:Phosphorylated. Phosphorylation on Ser-426 and Thr-446 occurs specifically during mitosis.,similarity:Belongs to the APC3/CDC27 family.,similarity:Contains 9 TPR repeats.,subunit:Interacts with RB.,
Background	The protein encoded by this gene shares strong similarity with Saccharomyces cerevisiae protein Cdc27, and the gene product of Schizosaccharomyces pombe nuc 2. This protein is a component of the anaphase-promoting complex (APC), which is composed of eight protein subunits and is highly conserved in eukaryotic cells. This complex catalyzes the formation of cyclin B-ubiquitin conjugate, which

Nanjing BYabscience technology Co.,Ltd



is responsible for the ubiquitin-mediated proteolysis of B-type cyclins. The protein encoded by this gene and three other members of the APC complex contain tetratricopeptide (TPR) repeats, which are important for protein-protein interactions. This protein was shown to interact with mitotic checkpoint proteins including Mad2, p55CDC and BUBR1, and it may thus be involved in controlling the timing of mitosis. Alternative splicing of this gene results in multiple transcript variants. Related pseudogenes have been i

matters needing attention

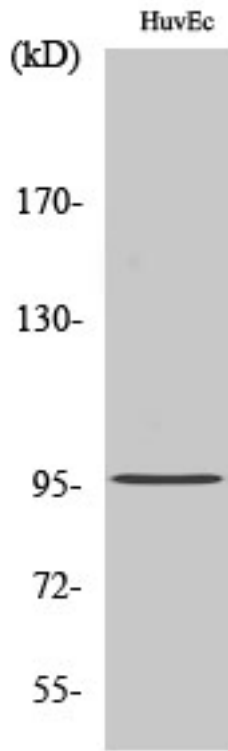
Avoid repeated freezing and thawing!

Usage suggestions

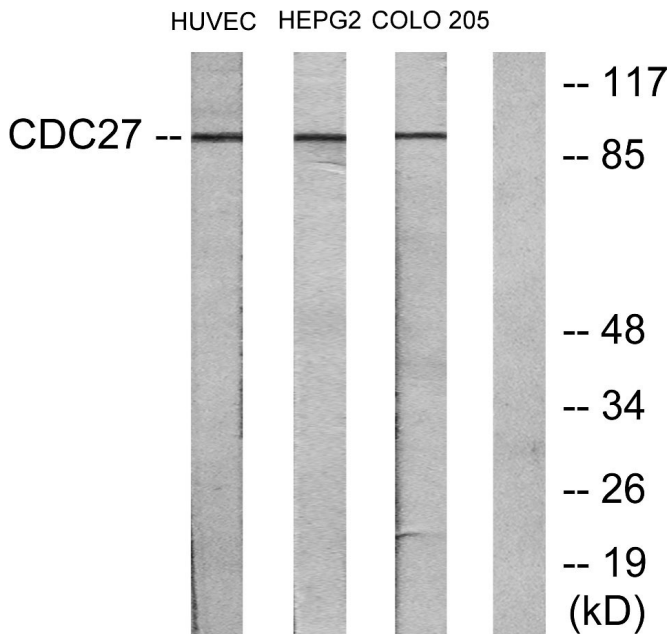
This product can be used in immunological reaction related experiments. For more information, please consult technical personnel.



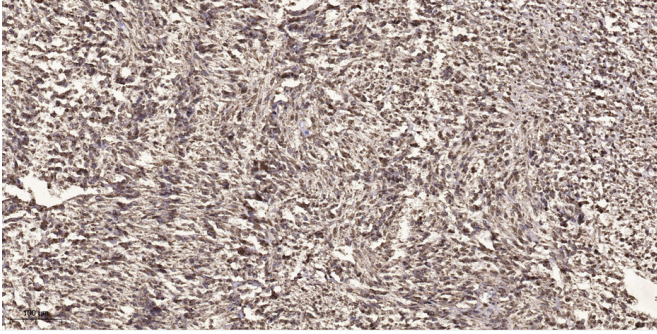
Products Images



Western Blot analysis of various cells using Cdc27 Polyclonal Antibody



Western blot analysis of lysates from HUVEC, HepG2, and COLO205 cells, using H-NUC Antibody. The lane on the right is blocked with the synthesized peptide.



Immunohistochemical analysis of paraffin-embedded human small intestinal carcinoma tissue. 1,primary Antibody was diluted at 1:200(4° overnight). 2, Sodium citrate pH 6.0 was used for antigen retrieval(>98° C,20min). 3,Secondary antibody was diluted at 1:200