



Cdc20 Polyclonal Antibody

Catalog No	BYab-16676
Isotype	IgG
Reactivity	Human;Mouse;Rat
Applications	WB;IHC;IF;ELISA
Gene Name	CDC20
Protein Name	Cell division cycle protein 20 homolog
Immunogen	The antiserum was produced against synthesized peptide derived from human p55CDC. AA range:81-130
Specificity	Cdc20 Polyclonal Antibody detects endogenous levels of Cdc20 protein.
Formulation	Liquid in PBS containing 50% glycerol, 0.5% BSA and 0.02% sodium azide.
Source	Polyclonal, Rabbit,IgG
Purification	The antibody was affinity-purified from rabbit antiserum by affinity-chromatography using epitope-specific immunogen.
Dilution	WB: 1/500 - 1/2000. IHC: 1/100 - 1/300. ELISA: 1/20000.. IF 1:50-200
Concentration	1 mg/ml
Purity	≥90%
Storage Stability	-20°C/1 year
Synonyms	CDC20; Cell division cycle protein 20 homolog; p55CDC
Observed Band	50kD
Cell Pathway	Cytoplasm, cytoskeleton, microtubule organizing center, centrosome . Cytoplasm, cytoskeleton, spindle pole .
Tissue Specificity	Colon,Colon adenocarcinoma,Liver,Lymph,Muscle,Ovary,Skin,Spleen,Testis,
Function	developmental stage:Synthesis is initiated at G1/S, protein level peaks in M phase and protein is abruptly degraded at M/G1 transition.,function:Required for full ubiquitin ligase activity of the anaphase promoting complex/cyclosome (APC/C) and may confer substrate specificity upon the complex. Is regulated by MAD2L1. In metaphase the MAD2L1-CDC20-APC/C ternary complex is inactive and in anaphase the CDC20-APC/C binary complex is active in degrading substrates.,pathway:Protein modification; protein ubiquitination.,PTM:Phosphorylated during mitosis, probably by maturation promoting factor (MPF).,PTM:Ubiquitinated and degraded by the proteasome during spindle assembly checkpoint.,similarity:Belongs to the WD repeat CDC20/Fizzy family.,similarity:Contains 7 WD repeats.,subunit:Found in a

Nanjing BYabscience technology Co.,Ltd



complex with CDC20, CDC27, SPATC1 and TUBG1. Interacts with SPATC1 (By similarity). Interacts with MAD2L

Background

CDC20 appears to act as a regulatory protein interacting with several other proteins at multiple points in the cell cycle. It is required for two microtubule-dependent processes, nuclear movement prior to anaphase and chromosome separation. [provided by RefSeq, Jul 2008],

matters needing attention

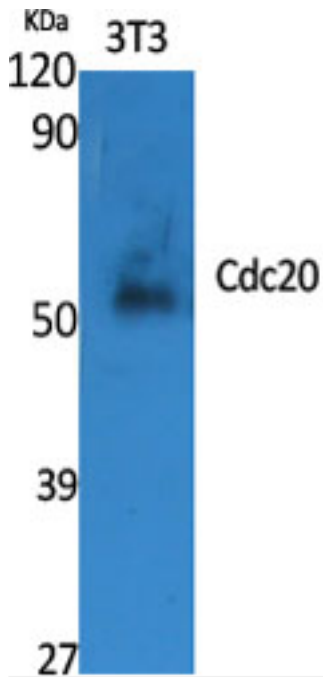
Avoid repeated freezing and thawing!

Usage suggestions

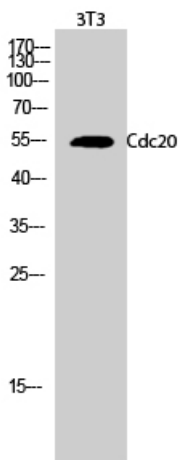
This product can be used in immunological reaction related experiments. For more information, please consult technical personnel.



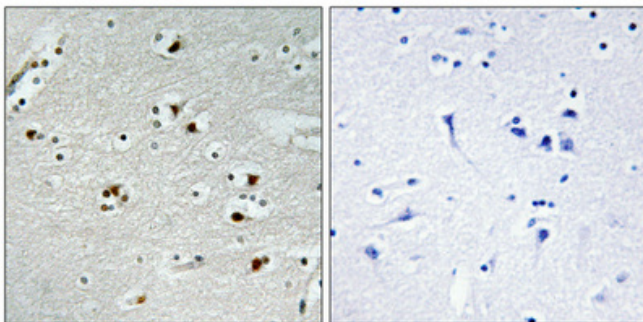
Products Images



Western Blot analysis of various cells using Cdc20 Polyclonal Antibody diluted at 1:2000

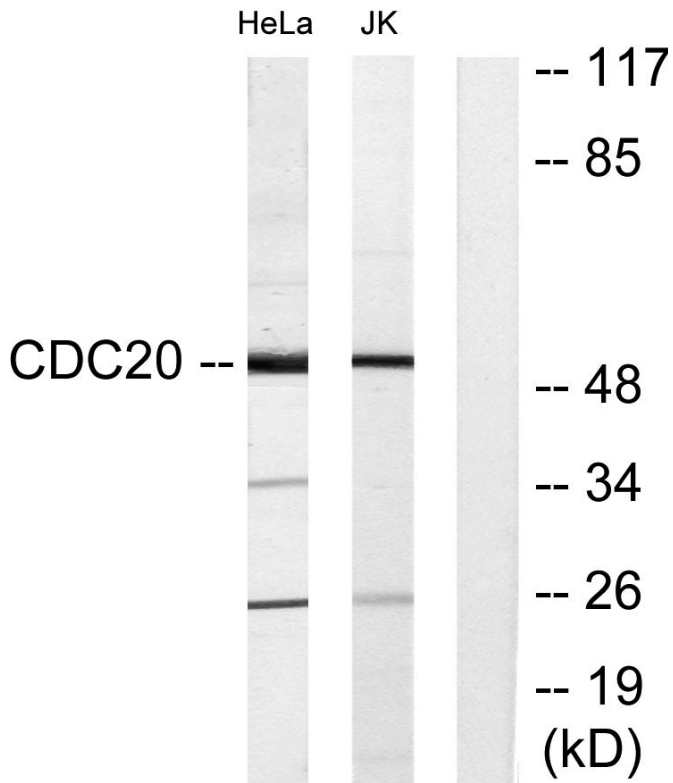


Western Blot analysis of 3T3 cells using Cdc20 Polyclonal Antibody diluted at 1:2000



Immunohistochemical analysis of paraffin-embedded Human brain. Antibody was diluted at 1:100(4° overnight). High-pressure and temperature Tris-EDTA,pH8.0 was used for antigen retrieval. Negative contrl (right) obtained from antibody was pre-absorbed by immunogen peptide.

Nanjing BYabscience technology Co.,Ltd



Western blot analysis of lysates from Jurkat and HeLa cells, using p55CDC Antibody. The lane on the right is blocked with the synthesized peptide.