



CCRK Polyclonal Antibody

Catalog No	BYab-16671
Isotype	IgG
Reactivity	Human;Mouse;Rat
Applications	WB;IHC;IF;ELISA
Gene Name	CDK20
Protein Name	Cyclin-dependent kinase 20
Immunogen	The antiserum was produced against synthesized peptide derived from human CCRK. AA range:31-80
Specificity	CCRK Polyclonal Antibody detects endogenous levels of CCRK protein.
Formulation	Liquid in PBS containing 50% glycerol, 0.5% BSA and 0.02% sodium azide.
Source	Polyclonal, Rabbit,IgG
Purification	The antibody was affinity-purified from rabbit antiserum by affinity-chromatography using epitope-specific immunogen.
Dilution	Western Blot: 1/500 - 1/2000. Immunohistochemistry: 1/100 - 1/300. Immunofluorescence: 1/200 - 1/1000. ELISA: 1/20000. Not yet tested in other applications.
Concentration	1 mg/ml
Purity	≥90%
Storage Stability	-20°C/1 year
Synonyms	CDK20; CCRK; CDCH; Cyclin-dependent kinase 20; CDK-activating kinase p42; CAK-kinase p42; Cell cycle-related kinase; Cell division protein kinase 20; Cyclin-dependent protein kinase H; Cyclin-kinase-activating kinase p42
Observed Band	39kD
Cell Pathway	Nucleus . Cytoplasm . Cell projection, cilium .
Tissue Specificity	
Function	similarity:Belongs to the protein kinase superfamily.,
Background	The protein encoded by this gene contains a kinase domain most closely related to the cyclin-dependent protein kinases. The encoded kinase may activate cyclin-dependent kinase 2 and is involved in cell growth. Alternatively spliced transcript variants encoding distinct isoforms have been reported. [provided by RefSeq, Dec 2009],

Nanjing BYabscience technology Co.,Ltd



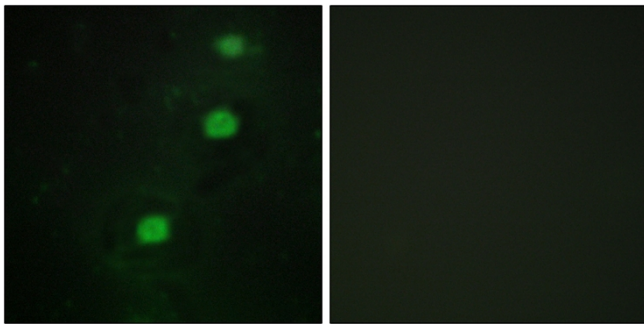
matters needing attention

Avoid repeated freezing and thawing!

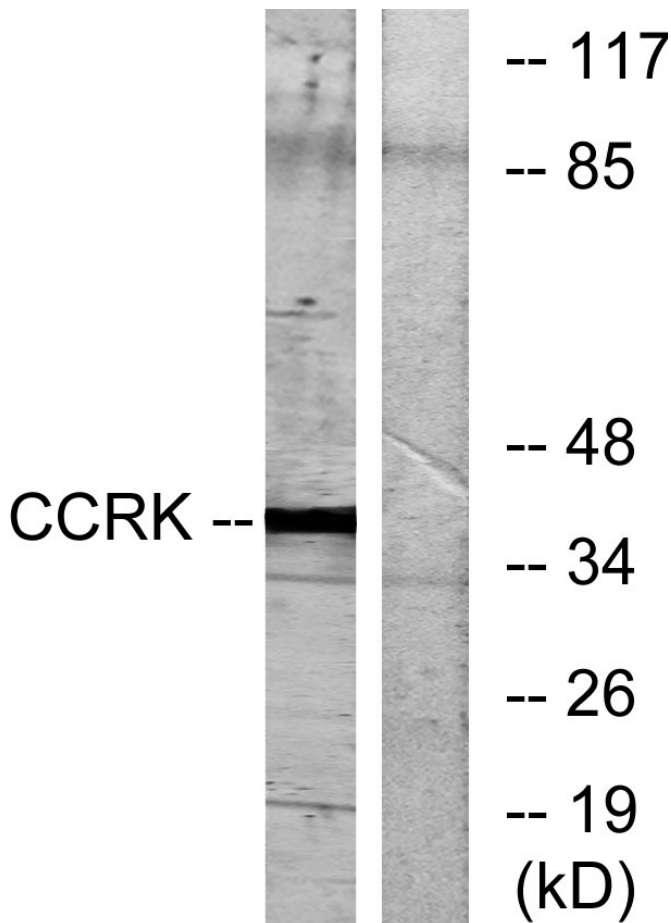
Usage suggestions

This product can be used in immunological reaction related experiments. For more information, please consult technical personnel.

Products Images

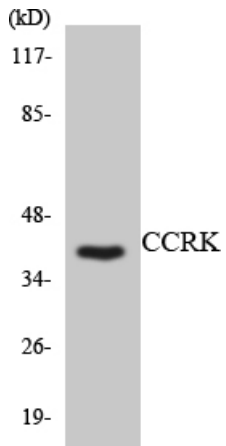


Immunofluorescence analysis of HUVEC cells, using CCRK Antibody. The picture on the right is blocked with the synthesized peptide.

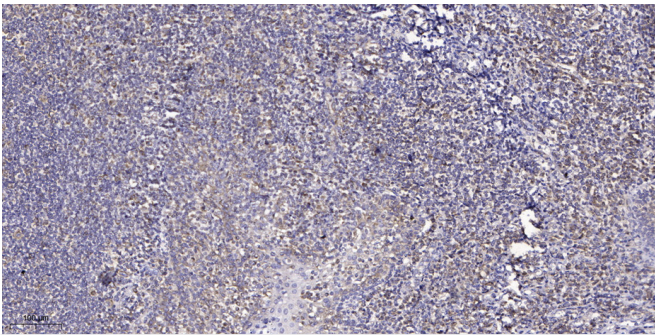


Western blot analysis of lysates from RAW264.7 cells, using CCRK Antibody. The lane on the right is blocked with the synthesized peptide.

Nanjing BYabscience technology Co.,Ltd



Western blot analysis of the lysates from RAW264.7 cells using CCRK antibody.



Immunohistochemical analysis of paraffin-embedded human tonsil. 1, Antibody was diluted at 1:200(4° overnight). 2, Tris-EDTA, pH9.0 was used for antigen retrieval. 3, Secondary antibody was diluted at 1:200(room temperature, 45min).