



# ATRIP (phospho Ser68) Polyclonal Antibody

<b>Catalog No</b>	BYab-16600
<b>Isotype</b>	IgG
<b>Reactivity</b>	Human;Mouse;Rat
<b>Applications</b>	WB;ELISA
<b>Gene Name</b>	ATRIP
<b>Protein Name</b>	ATR-interacting protein
<b>Immunogen</b>	The antiserum was produced against synthesized peptide derived from human ATRIP around the phosphorylation site of Ser68. AA range:34-83
<b>Specificity</b>	Phospho-ATRIP (S68) Polyclonal Antibody detects endogenous levels of ATRIP protein only when phosphorylated at S68.
<b>Formulation</b>	Liquid in PBS containing 50% glycerol, 0.5% BSA and 0.02% sodium azide.
<b>Source</b>	Polyclonal, Rabbit,IgG
<b>Purification</b>	The antibody was affinity-purified from rabbit antiserum by affinity-chromatography using epitope-specific immunogen.
<b>Dilution</b>	Western Blot: 1/500 - 1/2000. ELISA: 1/40000. Not yet tested in other applications.
<b>Concentration</b>	1 mg/ml
<b>Purity</b>	≥90%
<b>Storage Stability</b>	-20°C/1 year
<b>Synonyms</b>	ATRIP; AGS1; ATR-interacting protein; ATM and Rad3-related-interacting protein
<b>Observed Band</b>	80kD
<b>Cell Pathway</b>	Nucleus . Redistributes to discrete nuclear foci upon DNA damage.
<b>Tissue Specificity</b>	Ubiquitous.
<b>Function</b>	caution:The gene for this protein is either identical to or adjacent to that of TREX1. Some of the mRNAs that encode ATRIP also encode TREX1 in another reading frame.,domain:The EEXXDDL motif is required for the interaction with catalytic subunit PRKDC and its recruitment to sites of DNA damage.,function:Required for checkpoint signaling after DNA damage. Required for ATR expression, possibly by stabilizing the protein.,PTM:Phosphorylated by ATR.,sequence caution:Translation N-terminally extended.,similarity:Belongs to the ATRIP family.,subcellular location:Redistributes to discrete nuclear foci upon DNA damage.,subunit:Heterodimer with ATR. The heterodimer binds the RPA complex and is then recruited to single stranded DNA. Interacts with CEP164 (via N-terminus).,tissue specificity:Ubiquitous.,

**Nanjing BYabscience technology Co.,Ltd**



### Background

This gene encodes an essential component of the DNA damage checkpoint. The encoded protein binds to single-stranded DNA coated with replication protein A. The protein also interacts with the ataxia telangiectasia and Rad3 related protein kinase, resulting in its accumulation at intranuclear foci induced by DNA damage. Multiple transcript variants encoding different isoforms have been found for this gene. [provided by RefSeq, Aug 2012],

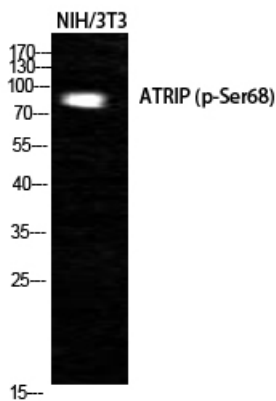
### matters needing attention

Avoid repeated freezing and thawing!

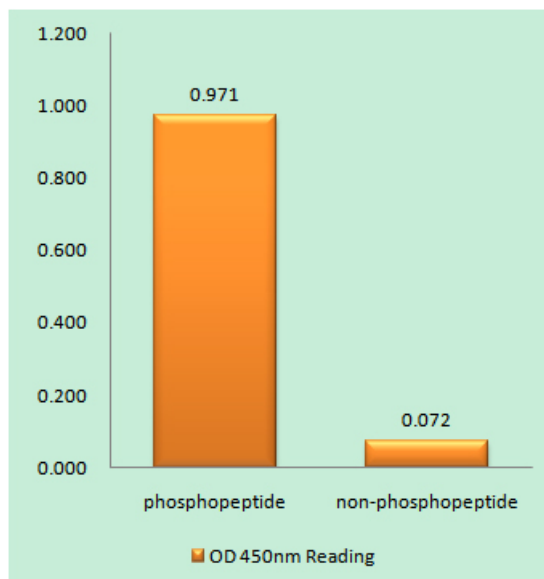
### Usage suggestions

This product can be used in immunological reaction related experiments. For more information, please consult technical personnel.

## Products Images

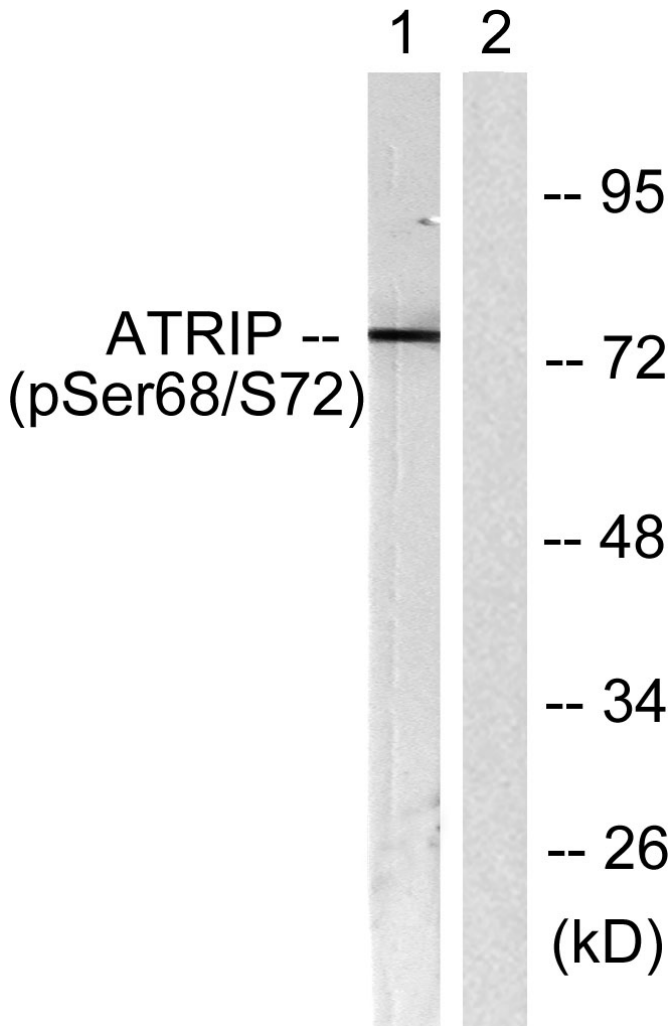


Western Blot analysis of NIH-3T3 cells using Phospho-ATRIP (S68) Polyclonal Antibody cells nucleus extracted by Minute TM Cytoplasmic and Nuclear Fractionation kit (SC-003, Inventibiotech, MN, USA).



Enzyme-Linked Immunosorbent Assay (Phospho-ELISA) for Immunogen Phosphopeptide (Phospho-left) and Non-Phosphopeptide (Phospho-right), using ATRIP (Phospho-Ser68) Antibody

**Nanjing BYabscience technology Co.,Ltd**



Western blot analysis of lysates from NIH/3T3 cells, using ATRIP (Phospho-Ser68) Antibody. The lane on the right is blocked with the phospho peptide.