



SCP-3 Monoclonal Antibody

Catalog No	BYab-16568
Isotype	IgG
Reactivity	Human
Applications	WB
Gene Name	SYCP3
Protein Name	Synaptonemal complex protein 3
Immunogen	Purified recombinant human SCP-3 protein fragments expressed in E.coli.
Specificity	SCP-3 Monoclonal Antibody detects endogenous levels of SCP-3 protein.
Formulation	Purified mouse monoclonal in buffer containing 0.1M Tris-Glycine (pH 7.4, 150 mM NaCl) with 0.2% sodium azide, 50% glycerol.
Source	Monoclonal, Mouse
Purification	
Dilution	Western Blot: 1/1000 - 1/2000. Not yet tested in other applications.
Concentration	1 mg/ml
Purity	≥90%
Storage Stability	-20°C/1 year
Synonyms	SYCP3; SCP3; Synaptonemal complex protein 3; SCP-3
Observed Band	
Cell Pathway	Nucleus . Chromosome . Chromosome, centromere . It is present in early unpaired cores, in the lateral domains of the synaptonemal complex and in the chromosome cores when they separate at diplotene. It is found axial to the metaphase I chromosomes and in association with pairs of sister centromeres. The centromere-associated protein becomes dissociated from the centromeres at anaphase II and is not found in mitotic metaphase centromeres. .
Tissue Specificity	Testis-specific.
Function	disease:Defects in SYCP3 are associated with azoospermia due to perturbations of meiosis [MIM:270960].,function:Component of the transverse filaments of synaptonemal complexes (SCS), formed between homologous chromosomes during meiotic prophase. Has an essential meiotic function in spermatogenesis. May be important for testis development.,similarity:Belongs to the XLR/SYCP3 family.,subcellular location:In tripartite segments of synaptonemal complexes, irrespective of whether these are synapsed or unsynapsed.,subunit:Interacts with SYCP2.,tissue specificity:Testis-specific.,

Nanjing BYabscience technology Co.,Ltd



Background

This gene encodes an essential structural component of the synaptonemal complex. This complex is involved in synapsis, recombination and segregation of meiotic chromosomes. Mutations in this gene are associated with azoospermia in males and susceptibility to pregnancy loss in females. Alternate splicing results in multiple transcript variants that encode the same protein. [provided by RefSeq, May 2010],

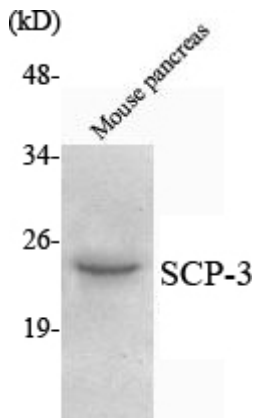
matters needing attention

Avoid repeated freezing and thawing!

Usage suggestions

This product can be used in immunological reaction related experiments. For more information, please consult technical personnel.

Products Images



Western Blot analysis using SCP-3 Monoclonal Antibody against mouse pancreas lysate.