



# NHERF-2 Polyclonal Antibody

<b>Catalog No</b>	BYab-16531
<b>Isotype</b>	IgG
<b>Reactivity</b>	Human;Mouse;Rat
<b>Applications</b>	WB;ELISA
<b>Gene Name</b>	SLC9A3R2
<b>Protein Name</b>	Na(+)/H(+) exchange regulatory cofactor NHE-RF2
<b>Immunogen</b>	Synthesized peptide derived from NHERF-2 . at AA range: 20-100
<b>Specificity</b>	NHERF-2 Polyclonal Antibody detects endogenous levels of NHERF-2 protein.
<b>Formulation</b>	Liquid in PBS containing 50% glycerol, 0.5% BSA and 0.02% sodium azide.
<b>Source</b>	Polyclonal, Rabbit,IgG
<b>Purification</b>	The antibody was affinity-purified from rabbit antiserum by affinity-chromatography using epitope-specific immunogen.
<b>Dilution</b>	Western Blot: 1/500 - 1/2000. ELISA: 1/10000. Not yet tested in other applications.
<b>Concentration</b>	1 mg/ml
<b>Purity</b>	≥90%
<b>Storage Stability</b>	-20°C/1 year
<b>Synonyms</b>	SLC9A3R2; NHERF2; Na(+)/H(+) exchange regulatory cofactor NHE-RF2; NHERF-2; NHE3 kinase A regulatory protein E3KARP; SRY-interacting protein 1; SIP-1; Sodium-hydrogen exchanger regulatory factor 2; Solute carrier family 9 isoform A3 regulatory factor 2; Tyrosine kinase activator protein 1; TKA-1
<b>Observed Band</b>	37kD
<b>Cell Pathway</b>	Endomembrane system ; Peripheral membrane protein . Nucleus . Apical cell membrane . Localizes with EZR and PODXL at the apical cell membrane of glomerular epithelium cells and the sides of the food processes (By similarity). Nuclear, in a punctate pattern. .
<b>Tissue Specificity</b>	Widely expressed.
<b>Function</b>	function:Scaffold protein that connects plasma membrane proteins with members of the ezrin/moesin/radixin family and thereby helps to link them to the actin cytoskeleton and to regulate their surface expression. Necessary for cAMP-mediated phosphorylation and inhibition of SLC9A3. May also act as scaffold protein in the nucleus.,similarity:Contains 2 PDZ (DHR) domains.,subcellular location:Nuclear, in a punctate pattern.,subunit:Homodimer,

**Nanjing BYabscience technology Co.,Ltd**



and heterodimer with SLC9A3R1. Binds PODXL and PDZK1 (By similarity). Binds ADRB2, SLC9A3, P2RY1, P2YR2, SRY, RDX and LPAR2.,tissue specificity:Widely expressed.,

**Background**

This gene encodes a member of the NHERF family of PDZ scaffolding proteins. These proteins mediate many cellular processes by binding to and regulating the membrane expression and protein-protein interactions of membrane receptors and transport proteins. The encoded protein plays a role in intestinal sodium absorption by regulating the activity of the sodium/hydrogen exchanger 3, and may also regulate the cystic fibrosis transmembrane regulator (CFTR) ion channel. Alternatively spliced transcript variants encoding multiple isoforms have been observed for this gene. [provided by RefSeq, Nov 2011],

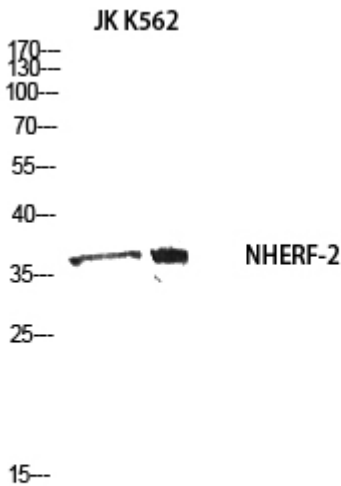
**matters needing attention**

Avoid repeated freezing and thawing!

**Usage suggestions**

This product can be used in immunological reaction related experiments. For more information, please consult technical personnel.

**Products Images**



Western blot analysis of JK K562 using NHERF-2 antibody. Secondary antibody(catalog#:RS0002) was diluted at 1:20000