



TMC8 Polyclonal Antibody

Catalog No	BYab-16503
Isotype	IgG
Reactivity	Human;Mouse;Rat
Applications	WB;IHC;IF;ELISA
Gene Name	TMC8
Protein Name	Transmembrane channel-like protein 8
Immunogen	The antiserum was produced against synthesized peptide derived from human TMC8. AA range:601-650
Specificity	TMC8 Polyclonal Antibody detects endogenous levels of TMC8 protein.
Formulation	Liquid in PBS containing 50% glycerol, 0.5% BSA and 0.02% sodium azide.
Source	Polyclonal, Rabbit,IgG
Purification	The antibody was affinity-purified from rabbit antiserum by affinity-chromatography using epitope-specific immunogen.
Dilution	WB: 1/500 - 1/2000. IHC: 1/100 - 1/300. ELISA: 1/5000.. IF 1:50-200
Concentration	1 mg/ml
Purity	≥90%
Storage Stability	-20°C/1 year
Synonyms	TMC8; EVER2; EVIN2; Transmembrane channel-like protein 8; Epidermodysplasia verruciformis protein 2
Observed Band	81kD
Cell Pathway	Endoplasmic reticulum membrane ; Multi-pass membrane protein .
Tissue Specificity	Expressed in placenta, prostate and testis.
Function	disease:Defects in TMC8 are a cause of epidermodysplasia verruciformis (EV) [MIM:226400]. It is a rare autosomal recessive genodermatosis associated with a high risk of skin carcinoma that results from an abnormal susceptibility to infection by specific human papillomaviruses. Infection leads to persistent wart-like or macular lesions.,online information:TMC8 mutation db,similarity:Belongs to the TMC family.,tissue specificity:Expressed in placenta, prostate and testis.,
Background	Epidermodysplasia verruciformis (EV) is an autosomal recessive dermatosis characterized by abnormal susceptibility to human papillomaviruses (HPVs) and a high rate of progression to squamous cell carcinoma on sun-exposed skin. EV is caused by mutations in either of two adjacent genes located on chromosome

Nanjing BYabscience technology Co.,Ltd



17q25.3. Both of these genes encode integral membrane proteins that localize to the endoplasmic reticulum and are predicted to form transmembrane channels. This gene encodes a transmembrane channel-like protein with 8 predicted transmembrane domains and 3 leucine zipper motifs. [provided by RefSeq, Jul 2008],

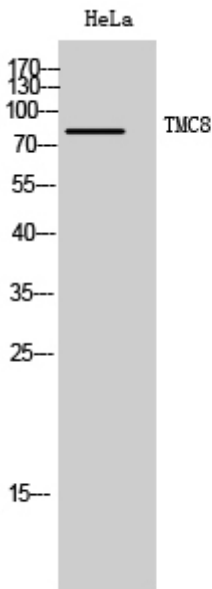
matters needing attention

Avoid repeated freezing and thawing!

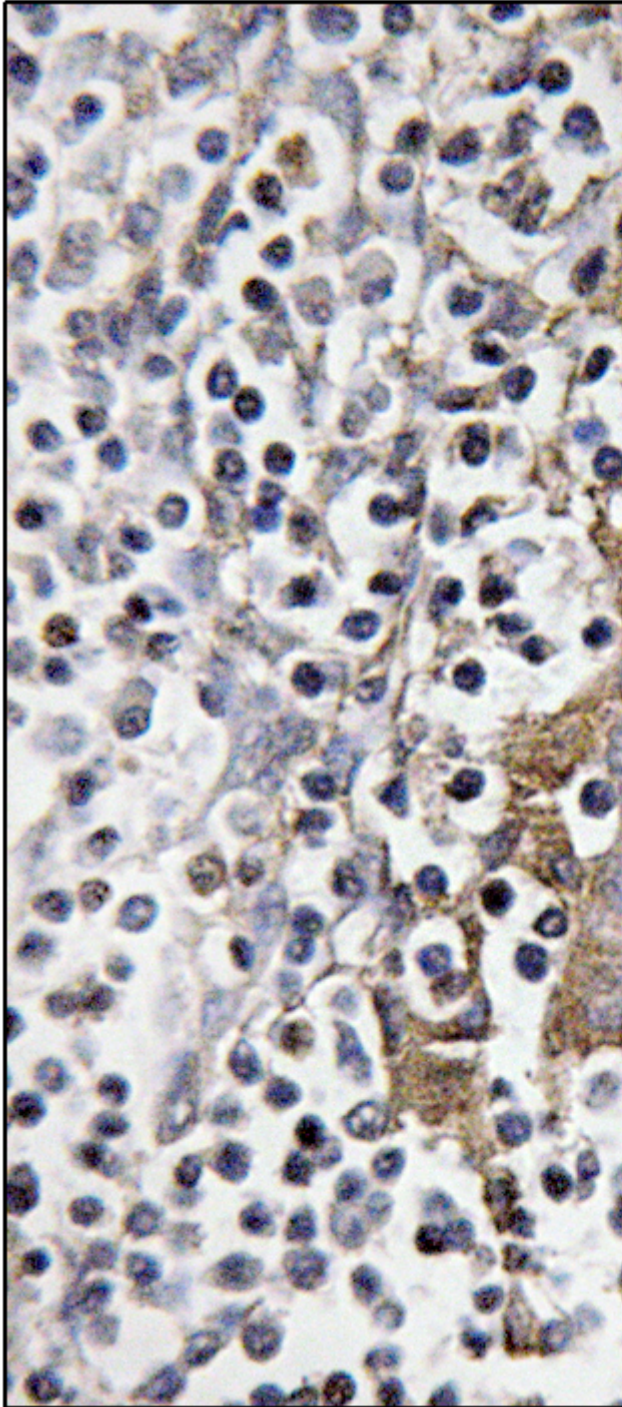
Usage suggestions

This product can be used in immunological reaction related experiments. For more information, please consult technical personnel.

Products Images



Western Blot analysis of HeLa cells using TMC8 Polyclonal Antibody. Secondary antibody(catalog#:RS0002) was diluted at 1:20000



Immunohistochemistry analysis of paraffin-embedded human tonsil, using TMC8 Antibody. The picture on the right is blocked with the synthesized peptide.