



THIK-2 Polyclonal Antibody

Catalog No	BYab-16502
Isotype	IgG
Reactivity	Human;Mouse;Rat
Applications	WB; ELISA;IHC
Gene Name	KCNK12
Protein Name	Potassium channel subfamily K member 12
Immunogen	The antiserum was produced against synthesized peptide derived from human KCNK12. AA range:336-385
Specificity	THIK-2 Polyclonal Antibody detects endogenous levels of THIK-2 protein.
Formulation	Liquid in PBS containing 50% glycerol, 0.5% BSA and 0.02% sodium azide.
Source	Polyclonal, Rabbit,IgG
Purification	The antibody was affinity-purified from rabbit antiserum by affinity-chromatography using epitope-specific immunogen.
Dilution	WB 1:500-2000;IHC-p 1:50-300; ELISA 2000-20000
Concentration	1 mg/ml
Purity	≥90%
Storage Stability	-20°C/1 year
Synonyms	KCNK12; Potassium channel subfamily K member 12; Tandem pore domain halothane-inhibited potassium channel 2; THIK-2
Observed Band	47kD
Cell Pathway	Membrane ; Multi-pass membrane protein .
Tissue Specificity	Epithelium,PNS,
Function	function:Probable potassium channel subunit. No channel activity observed in heterologous systems. May need to associate with another protein to form a functional channel.,similarity:Belongs to the two pore domain potassium channel (TC 1.A.1.8) family.,subunit:Heterodimer .,
Background	potassium two pore domain channel subfamily K member 12(KCNK12) Homo sapiens This gene encodes one of the members of the superfamily of potassium channel proteins containing two pore-forming P domains. The product of this gene has not been shown to be a functional channel, however, it may require other non-pore-forming proteins for activity. [provided by RefSeq, Jul 2008],

Nanjing BYabscience technology Co.,Ltd



matters needing attention

Avoid repeated freezing and thawing!

Usage suggestions

This product can be used in immunological reaction related experiments. For more information, please consult technical personnel.

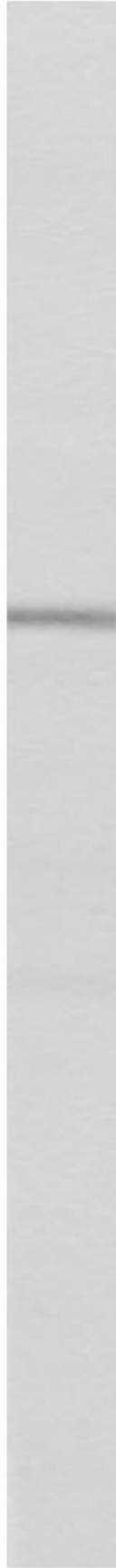
Products Images



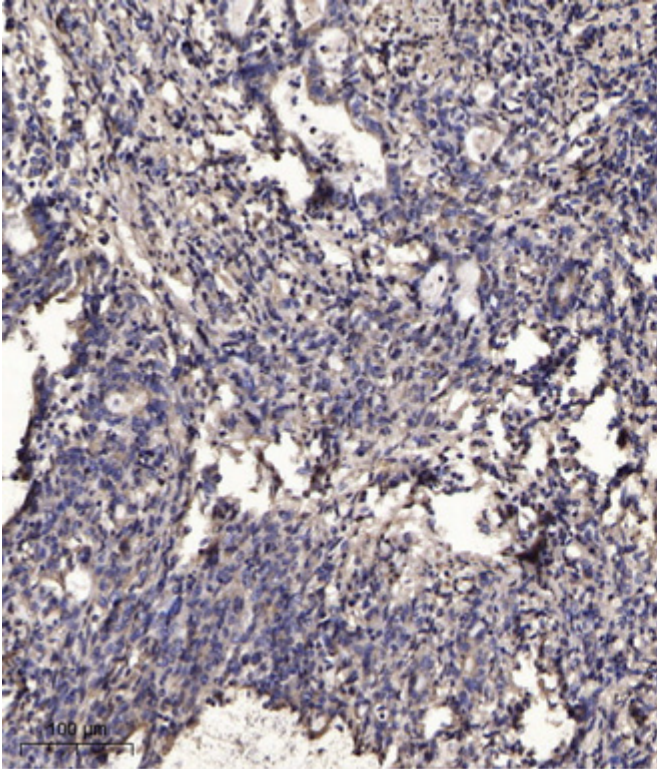
Rat Muscle

Western blot analysis of KCNK12 Antibody. The lane on the right is blocked with the KCNK12 peptide.

KCNK12



nce technology Co.,Ltd



Immunohistochemical analysis of paraffin-embedded human Gastric adenocarcinoma. 1, Antibody was diluted at 1:200(4° overnight). 2, Tris-EDTA,pH9.0 was used for antigen retrieval. 3,Secondary antibody was diluted at 1:200(room temperature, 45min).