



OATP-C Polyclonal Antibody

Catalog No	BYab-16492
Isotype	IgG
Reactivity	Human;Rat;Mouse;
Applications	WB;ELISA
Gene Name	SLCO1B1
Protein Name	Solute carrier organic anion transporter family member 1B1
Immunogen	The antiserum was produced against synthesized peptide derived from human SLCO1B1. AA range:251-300
Specificity	OATP-C Polyclonal Antibody detects endogenous levels of OATP-C protein.
Formulation	Liquid in PBS containing 50% glycerol, 0.5% BSA and 0.02% sodium azide.
Source	Polyclonal, Rabbit,IgG
Purification	The antibody was affinity-purified from rabbit antiserum by affinity-chromatography using epitope-specific immunogen.
Dilution	Western Blot: 1/500 - 1/2000. ELISA: 1/40000. Not yet tested in other applications.
Concentration	1 mg/ml
Purity	≥90%
Storage Stability	-20°C/1 year
Synonyms	SLCO1B1; LST1; OATP1B1; OATP2; OATPC; SLC21A6; Solute carrier organic anion transporter family member 1B1; Liver-specific organic anion transporter 1; LST-1; OATP-C; Sodium-independent organic anion-transporting polypeptide 2; OATP-2; Solut
Observed Band	76kD
Cell Pathway	Basolateral cell membrane ; Multi-pass membrane protein . Detected in basolateral membranes of hepatocytes.
Tissue Specificity	Highly expressed in liver, at the basolateral membranes of centrilobular hepatocytes. Not detected in heart, brain, placenta, lung, skeletal muscle, kidney, pancreas, spleen, thymus, prostate, testis, ovary, small intestine, colon and leukocyte.
Function	function:Mediates the Na(+)-independent transport of organic anions such as pravastatin, taurocholate, methotrexate, dehydroepiandrosterone sulfate, 17-beta-glucuronosyl estradiol, estrone sulfate, prostaglandin E2, thromboxane B2, leukotriene C3, leukotriene E4, thyroxine and triiodothyronine. May play an important role in the clearance of bile acids and organic anions from the

Nanjing BYabscience technology Co.,Ltd



liver.,similarity:Belongs to the organo anion transporter (TC 2.A.60) family.,subcellular location:Detected in basolateral membranes of hepatocytes.,tissue specificity:Highly expressed in liver. Not detected in heart, brain, placenta, lung, skeletal muscle, kidney, pancreas, spleen, thymus, prostate, testis, ovary, small intestine, colon and leukocyte.,

Background

This gene encodes a liver-specific member of the organic anion transporter family. The encoded protein is a transmembrane receptor that mediates the sodium-independent uptake of numerous endogenous compounds including bilirubin, 17-beta-glucuronosyl estradiol and leukotriene C4. This protein is also involved in the removal of drug compounds such as statins, bromosulfophthalein and rifampin from the blood into the hepatocytes. Polymorphisms in the gene encoding this protein are associated with impaired transporter function. [provided by RefSeq, Mar 2009],

matters needing attention

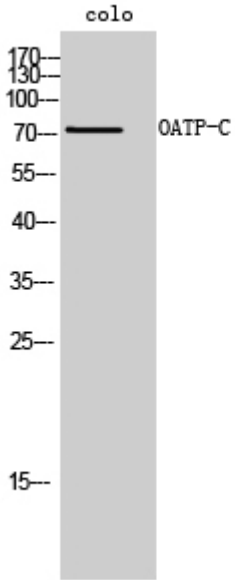
Avoid repeated freezing and thawing!

Usage suggestions

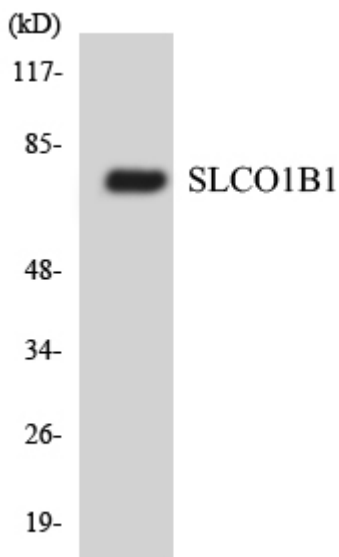
This product can be used in immunological reaction related experiments. For more information, please consult technical personnel.



Products Images



Western Blot analysis of colo cells using OATP-C Polyclonal Antibody



Western blot analysis of the lysates from HUVEC cells using SLCO1B1 antibody.