



KCNG3 Polyclonal Antibody

Catalog No	BYab-16434
Isotype	IgG
Reactivity	Human;Mouse;Rat
Applications	WB;IHC
Gene Name	KCNG3
Protein Name	Potassium voltage-gated channel subfamily G member 3
Immunogen	The antiserum was produced against synthesized peptide derived from human KCNG3. AA range:183-232
Specificity	KCNG3 Polyclonal Antibody detects endogenous levels of KCNG3 protein.
Formulation	Liquid in PBS containing 50% glycerol, 0.5% BSA and 0.02% sodium azide.
Source	Polyclonal, Rabbit,IgG
Purification	The antibody was affinity-purified from rabbit antiserum by affinity-chromatography using epitope-specific immunogen.
Dilution	WB 1:500-2000;IHC-p 1:50-300
Concentration	1 mg/ml
Purity	≥90%
Storage Stability	-20°C/1 year
Synonyms	KCNG3; Potassium voltage-gated channel subfamily G member 3; Voltage-gated potassium channel subunit Kv10.1; Voltage-gated potassium channel subunit Kv6.3
Observed Band	50kD
Cell Pathway	Cell membrane ; Multi-pass membrane protein . Cytoplasm . Has to be associated with KCNB1 or possibly another partner to get inserted in the plasma membrane (PubMed:12060745). Colocalizes with KCNB1 at the plasma membrane (PubMed:12060745, PubMed:19074135). Remains intracellular in the absence of KCNB1 (PubMed:12060745). .
Tissue Specificity	Expressed in the brain, liver, testis, small intestine, colon, thymus and adrenal gland (PubMed:11852086, PubMed:12060745).
Function	domain:The segment S4 is probably the voltage-sensor and is characterized by a series of positively charged amino acids at every third position.,function:Potassium channel subunit. Modulates channel activity.,similarity:Belongs to the potassium channel family. G subfamily.,subcellular location:Has to be associated with KCNB1 or possibly

Nanjing BYabscience technology Co.,Ltd



another partner to get inserted in the plasma membrane. Remains intracellular in the absence of KCNB1.,subunit:Heteromultimer with KCNB1, KCNC1 and KCNF1. Does not form homomultimers.,tissue specificity:Detected in many parts of the brain with the exception of the cerebellum, in testis, pancreas, lung, kidney, ovary, small intestine, colon, thymus, adrenal gland and spinal cord.,

Background

Voltage-gated potassium (Kv) channels represent the most complex class of voltage-gated ion channels from both functional and structural standpoints. Their diverse functions include regulating neurotransmitter release, heart rate, insulin secretion, neuronal excitability, epithelial electrolyte transport, smooth muscle contraction, and cell volume. This gene encodes a member of the potassium channel, voltage-gated, subfamily G. This member is a gamma subunit functioning as a modulatory molecule. Alternative splicing results in two transcript variants encoding distinct isoforms. [provided by RefSeq, Jul 2008],

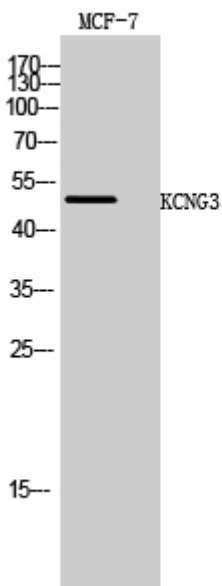
matters needing attention

Avoid repeated freezing and thawing!

Usage suggestions

This product can be used in immunological reaction related experiments. For more information, please consult technical personnel.

Products Images



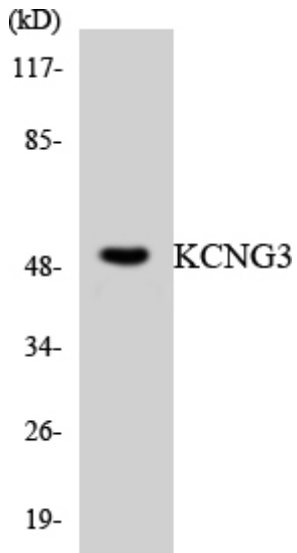
Western Blot analysis of MCF-7 cells using KCNG3 Polyclonal Antibody



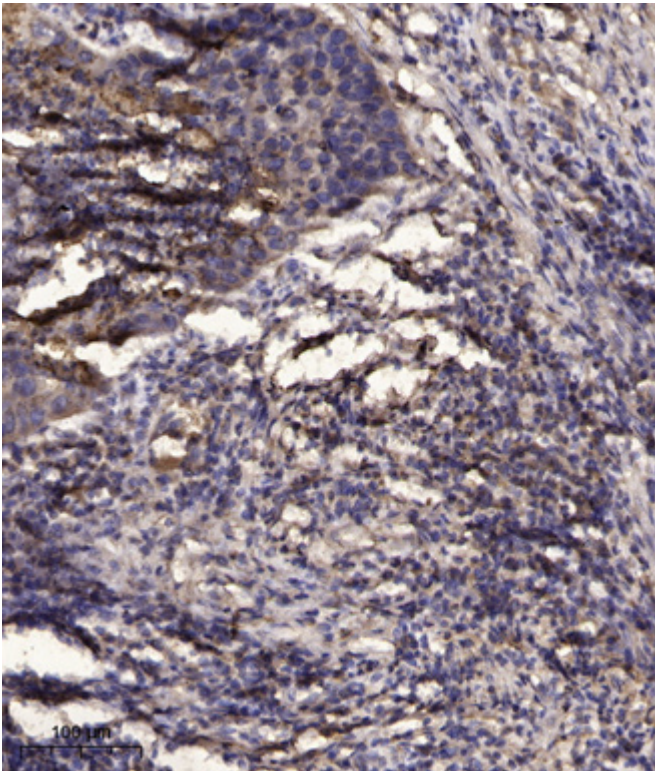
M

Western blot analysis of lysates from MCF-7 cells, using KCNG3 Antibody. The lane on the right is blocked with the synthesized peptide.

KCNG3--



Western blot analysis of the lysates from HeLa cells using KCNG3 antibody.



Immunohistochemical analysis of paraffin-embedded human Squamous cell carcinoma of lung. 1, Antibody was diluted at 1:200(4° overnight). 2, Tris-EDTA,pH9.0 was used for antigen retrieval. 3,Secondary antibody was diluted at 1:200(room temperature, 45min).