



KCNF1 Polyclonal Antibody

Catalog No	BYab-16432
Isotype	IgG
Reactivity	Human;Mouse
Applications	WB;ELISA;IHC
Gene Name	KCNF1
Protein Name	Potassium voltage-gated channel subfamily F member 1
Immunogen	The antiserum was produced against synthesized peptide derived from human KCNF1. AA range:191-240
Specificity	KCNF1 Polyclonal Antibody detects endogenous levels of KCNF1 protein.
Formulation	Liquid in PBS containing 50% glycerol, 0.5% BSA and 0.02% sodium azide.
Source	Polyclonal, Rabbit,IgG
Purification	The antibody was affinity-purified from rabbit antiserum by affinity-chromatography using epitope-specific immunogen.
Dilution	WB 1:500-2000;IHC-p 1:50-300; ELISA 2000-20000
Concentration	1 mg/ml
Purity	≥90%
Storage Stability	-20°C/1 year
Synonyms	KCNF1; Potassium voltage-gated channel subfamily F member 1; Voltage-gated potassium channel subunit Kv5.1; KH1
Observed Band	55kD
Cell Pathway	Membrane; Multi-pass membrane protein.
Tissue Specificity	Detected in heart, brain, liver, skeletal muscle, kidney and pancreas.
Function	domain:The segment S4 is probably the voltage-sensor and is characterized by a series of positively charged amino acids at every third position.,function:Putative voltage-gated potassium channel.,similarity:Belongs to the potassium channel family. F subfamily.,subunit:Heteromultimer with KCNG3, KCNG4 and KCNV2. Interacts with DLG1.,tissue specificity:Detected in heart, brain, liver, skeletal muscle, kidney and pancreas.,
Background	Voltage-gated potassium (Kv) channels represent the most complex class of voltage-gated ion channels from both functional and structural standpoints. Their diverse functions include regulating neurotransmitter release, heart rate, insulin secretion, neuronal excitability, epithelial electrolyte transport, smooth muscle

Nanjing BYabscience technology Co.,Ltd



contraction, and cell volume. This gene encodes a member of the potassium channel, voltage-gated, subfamily F. This gene is intronless and expressed in all tissues tested, including the heart, skeletal muscle, brain, kidney, and pancreas. [provided by RefSeq, Jul 2008],

matters needing attention

Avoid repeated freezing and thawing!

Usage suggestions

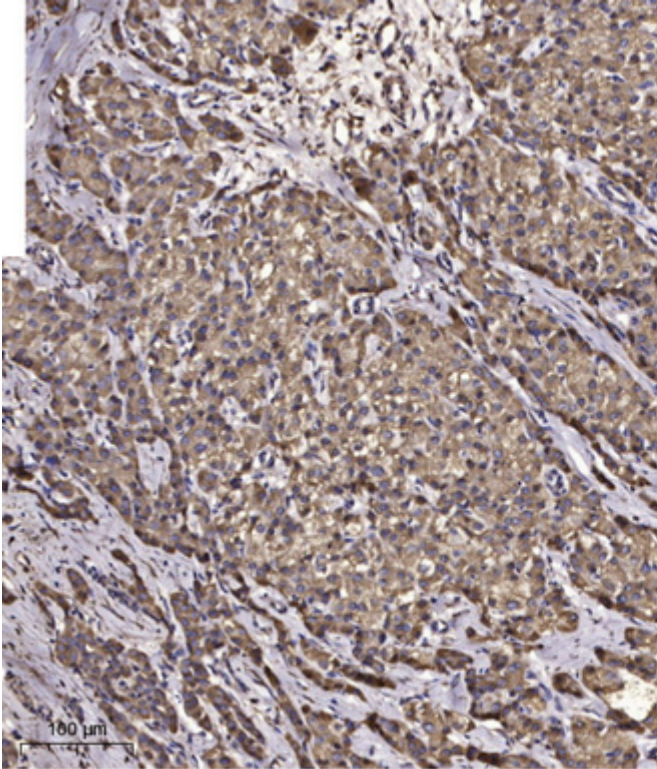
This product can be used in immunological reaction related experiments. For more information, please consult technical personnel.

Products Images



Western blot analysis of KCNF1 Antibody. The lane on the right is blocked with the KCNF1 peptide.

KCNF1



Immunohistochemical analysis of paraffin-embedded human liver cancer. 1, Antibody was diluted at 1:200(4° overnight). 2, Tris-EDTA,pH9.0 was used for antigen retrieval. 3,Secondary antibody was diluted at 1:200(room temperature, 45min).