



ENaC δ Polyclonal Antibody

Catalog No	BYab-16412
Isotype	IgG
Reactivity	Human;Rat;Mouse;
Applications	WB;IF;ELISA
Gene Name	SCNN1D
Protein Name	Amiloride-sensitive sodium channel subunit delta
Immunogen	The antiserum was produced against synthesized peptide derived from human SCNN1D. AA range:411-460
Specificity	ENaC δ Polyclonal Antibody detects endogenous levels of ENaC δ protein.
Formulation	Liquid in PBS containing 50% glycerol, 0.5% BSA and 0.02% sodium azide.
Source	Polyclonal, Rabbit,IgG
Purification	The antibody was affinity-purified from rabbit antiserum by affinity-chromatography using epitope-specific immunogen.
Dilution	Western Blot: 1/500 - 1/2000. Immunofluorescence: 1/200 - 1/1000. ELISA: 1/20000. Not yet tested in other applications.
Concentration	1 mg/ml
Purity	$\geq 90\%$
Storage Stability	-20°C/1 year
Synonyms	SCNN1D; DNACH; Amiloride-sensitive sodium channel subunit delta; Delta-NaCH; Epithelial Na(+) channel subunit delta; Delta-ENaC; ENaCD; Nonvoltage-gated sodium channel 1 subunit delta; SCNED
Observed Band	70kD
Cell Pathway	Cell membrane ; Multi-pass membrane protein .
Tissue Specificity	Brain,Hippocampus,Lung,Nasal epithelium,Testis,
Function	function:Sodium permeable non-voltage-sensitive ion channel inhibited by the diuretic amiloride. Mediates the electrodiffusion of the luminal sodium (and water, which follows osmotically) through the apical membrane of epithelial cells. Controls the reabsorption of sodium in kidney, colon, lung and sweat glands. Also plays a role in taste perception.,similarity:Belongs to the amiloride-sensitive sodium channel family.,subunit:Heterotetramer of two alpha, one beta and one gamma subunit. A delta subunit can replace the alpha subunit.,

Nanjing BYabscience technology Co.,Ltd



Background

function:Sodium permeable non-voltage-sensitive ion channel inhibited by the diuretic amiloride. Mediates the electrodiffusion of the luminal sodium (and water, which follows osmotically) through the apical membrane of epithelial cells. Controls the reabsorption of sodium in kidney, colon, lung and sweat glands. Also plays a role in taste perception.,similarity:Belongs to the amiloride-sensitive sodium channel family.,subunit:Heterotetramer of two alpha, one beta and one gamma subunit. A delta subunit can replace the alpha subunit.,

matters needing attention

Avoid repeated freezing and thawing!

Usage suggestions

This product can be used in immunological reaction related experiments. For more information, please consult technical personnel.



Products Images

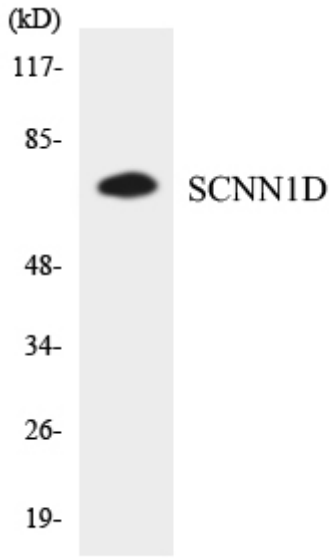


Immunofluorescence analysis of A549 cells, using SCNN1D Antibody. The picture on the right is blocked with the synthesized peptide.



Western blot analysis of lysates from RAW264.7 cells, using SCNN1D Antibody. The lane on the right is blocked with the synthesized peptide.

SCNN1D



Western blot analysis of the lysates from HT-29 cells using SCNN1D antibody.