



CLC-KA Polyclonal Antibody

Catalog No	BYab-16403
Isotype	IgG
Reactivity	Human;Rat;Mouse;
Applications	WB;ELISA
Gene Name	CLCNKA
Protein Name	Chloride channel protein ClC-Ka
Immunogen	The antiserum was produced against synthesized peptide derived from human CLCNKA. AA range:581-630
Specificity	CLC-KA Polyclonal Antibody detects endogenous levels of CLC-KA protein.
Formulation	Liquid in PBS containing 50% glycerol, 0.5% BSA and 0.02% sodium azide.
Source	Polyclonal, Rabbit,IgG
Purification	The antibody was affinity-purified from rabbit antiserum by affinity-chromatography using epitope-specific immunogen.
Dilution	Western Blot: 1/500 - 1/2000. ELISA: 1/40000. Not yet tested in other applications.
Concentration	1 mg/ml
Purity	≥90%
Storage Stability	-20°C/1 year
Synonyms	CLCNKA; Chloride channel protein ClC-Ka; Chloride channel Ka; ClC-K1
Observed Band	75kD
Cell Pathway	Membrane; Multi-pass membrane protein.
Tissue Specificity	Expressed predominantly in the kidney. All nephron segments expressing BSND also express CLCNK proteins.
Function	function:Voltage-gated chloride channel. Chloride channels have several functions including the regulation of cell volume; membrane potential stabilization, signal transduction and transepithelial transport. May be important in urinary concentrating mechanisms.,similarity:Belongs to the chloride channel (TC 2.A.49) family.,similarity:Contains 2 CBS domains.,subunit:Interacts with BSND. Forms heteromers with BSND in the thin ascending limb of Henle.,tissue specificity:Expressed predominantly in the kidney. All nephron segments expressing BSND also express CLCNK proteins.,
Background	This gene is a member of the CLC family of voltage-gated chloride channels. The encoded protein is predicted to have 12 transmembrane domains, and requires a

Nanjing BYabscience technology Co.,Ltd



beta subunit called barttin to form a functional channel. It is thought to function in salt reabsorption in the kidney and potassium recycling in the inner ear. The gene is highly similar to CLCNKB, which is located 10 kb downstream from this gene. Multiple transcript variants encoding different isoforms have been found for this gene. [provided by RefSeq, Jul 2008],

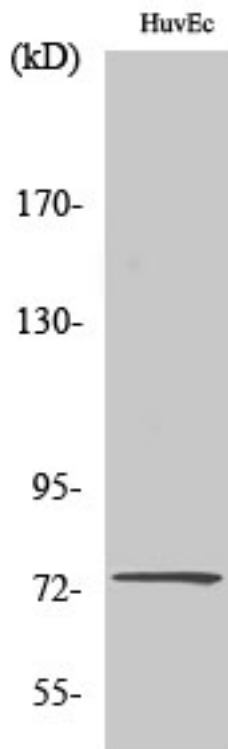
matters needing attention

Avoid repeated freezing and thawing!

Usage suggestions

This product can be used in immunological reaction related experiments. For more information, please consult technical personnel.

Products Images

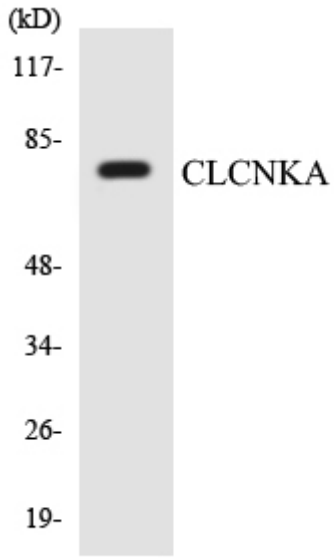


Western Blot analysis of various cells using CLC-KA Polyclonal Antibody



Western blot analysis of CLCNKA Antibody. The lane on the right is blocked with the CLCNKA peptide.

CLCNKA



Western blot analysis of the lysates from HepG2 cells using CLCNKA antibody.