



AQP3 Polyclonal Antibody

Catalog No	BYab-16380
Isotype	IgG
Reactivity	Human;Mouse;Rat
Applications	IHC;IF;ELISA
Gene Name	AQP3
Protein Name	Aquaporin-3
Immunogen	The antiserum was produced against synthesized peptide derived from human AQP3. AA range:165-214
Specificity	AQP3 Polyclonal Antibody detects endogenous levels of AQP3 protein.
Formulation	Liquid in PBS containing 50% glycerol, 0.5% BSA and 0.02% sodium azide.
Source	Polyclonal, Rabbit,IgG
Purification	The antibody was affinity-purified from rabbit antiserum by affinity-chromatography using epitope-specific immunogen.
Dilution	IHC: 1/100 - 1/300. ELISA: 1/40000.. IF 1:50-200
Concentration	1 mg/ml
Purity	≥90%
Storage Stability	-20°C/1 year
Synonyms	AQP3; Aquaporin-3; AQP-3; Aquaglyceroporin-3
Observed Band	
Cell Pathway	Cell membrane ; Multi-pass membrane protein . Basolateral cell membrane ; Multi-pass membrane protein .
Tissue Specificity	Widely expressed in epithelial cells of kidney (collecting ducts) and airways, in keratinocytes, immature dendritic cells and erythrocytes. Isoform 2 is not detectable in erythrocytes at the protein level.
Function	domain:Aquaporins contain two tandem repeats each containing three membrane-spanning domains and a pore-forming loop with the signature motif Asn-Pro-Ala (NPA).,function:Forms a water-specific channel that provide kidney medullary collecting duct with high permeability to water, thereby permitting water to move in the direction of an osmotic gradient. May function as a water and urea exit mechanism in antidiuresis in collecting duct cells. Also slightly permeable to urea and glycerol. May play an important role in gastrointestinal tract water transport and in glycerol metabolism.,online information:Blood group antigen gene mutation database,polymorphism:AQP3 is responsible for the GIL blood group system. Isoform 2 is detected in GIL-negative individuals that lack functional

Nanjing BYabscience technology Co.,Ltd



AQP3.,similarity:Belongs to the MIP/aquaporin (TC 1.A.8) family.,subcellular location:In collecting ducts of kidney

Background

This gene encodes the water channel protein aquaporin 3. Aquaporins are a family of small integral membrane proteins related to the major intrinsic protein, also known as aquaporin 0. Aquaporin 3 is localized at the basal lateral membranes of collecting duct cells in the kidney. In addition to its water channel function, aquaporin 3 has been found to facilitate the transport of nonionic small solutes such as urea and glycerol, but to a smaller degree. It has been suggested that water channels can be functionally heterogeneous and possess water and solute permeation mechanisms. Alternative splicing of this gene results in multiple transcript variants encoding different isoforms. [provided by RefSeq, Dec 2015],

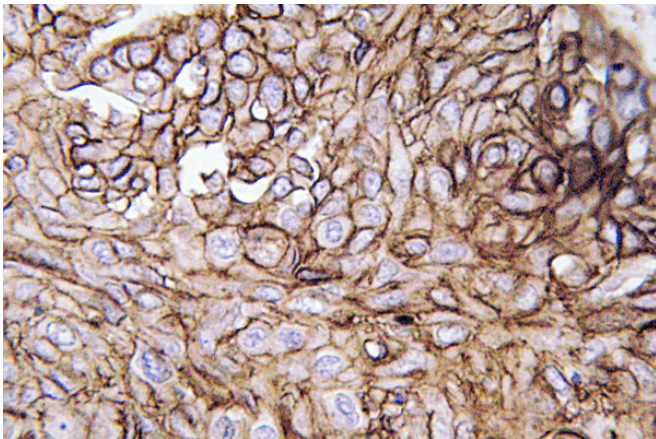
matters needing attention

Avoid repeated freezing and thawing!

Usage suggestions

This product can be used in immunological reaction related experiments. For more information, please consult technical personnel.

Products Images



Immunohistochemistry analysis of AQP3 antibody in paraffin-embedded human lung carcinoma tissue.