



ANT3 Polyclonal Antibody

Catalog No	BYab-16373
Isotype	IgG
Reactivity	Human;Rat;Mouse;
Applications	WB;IHC;IF;ELISA
Gene Name	SLC25A6
Protein Name	ADP/ATP translocase 3
Immunogen	The antiserum was produced against synthesized peptide derived from human SLC25A6. AA range:121-170
Specificity	ANT3 Polyclonal Antibody detects endogenous levels of ANT3 protein.
Formulation	Liquid in PBS containing 50% glycerol, 0.5% BSA and 0.02% sodium azide.
Source	Polyclonal, Rabbit,IgG
Purification	The antibody was affinity-purified from rabbit antiserum by affinity-chromatography using epitope-specific immunogen.
Dilution	WB: 1/500 - 1/2000. IHC: 1/100 - 1/300. ELISA: 1/40000.. IF 1:50-200
Concentration	1 mg/ml
Purity	≥90%
Storage Stability	-20°C/1 year
Synonyms	SLC25A6; ANT3; CDABP0051; ADP/ATP translocase 3; ADP; ATP carrier protein 3; ADP,ATP carrier protein, isoform T2; ANT 2; Adenine nucleotide translocator 3; ANT 3; Solute carrier family 25 member 6
Observed Band	32kD
Cell Pathway	Mitochondrion inner membrane ; Multi-pass membrane protein . Membrane ; Multi-pass membrane protein . The complex formed with ARL2BP, ARL2 and SLC25A6/ANT3 is expressed in mitochondria (By similarity). May localize to non-mitochondrial membranes (By similarity) .
Tissue Specificity	Expressed in erythrocytes (at protein level).
Function	function:Catalyzes the exchange of ADP and ATP across the mitochondrial inner membrane. May participate in the formation of the permeability transition pore complex (PTPC) responsible for the release of mitochondrial products that triggers apoptosis.,miscellaneous:The gene encoding for this protein is located in the pseudoautosomal region 1 (PAR1) of X and Y chromosomes.,miscellaneous:The transmembrane helices are not perpendicular to the plane of the membrane, but cross the membrane at an angle.

Nanjing BYabscience technology Co.,Ltd



Odd-numbered transmembrane helices exhibit a sharp kink, due to the presence of a conserved proline residue.,similarity:Belongs to the mitochondrial carrier family.,similarity:Contains 3 Solcar repeats.,subunit:Homodimer. Interacts with influenza A virus PB1-F2 protein and HIV-1 Vpr.,

Background

This gene is a member of the mitochondrial carrier subfamily of solute carrier protein genes. The product of this gene functions as a gated pore that translocates ADP from the cytoplasm into the mitochondrial matrix and ATP from the mitochondrial matrix into the cytoplasm. The protein is implicated in the function of the permeability transition pore complex (PTPC), which regulates the release of mitochondrial products that induce apoptosis. The human genome contains several non-transcribed pseudogenes of this gene. [provided by RefSeq, Jun 2013],

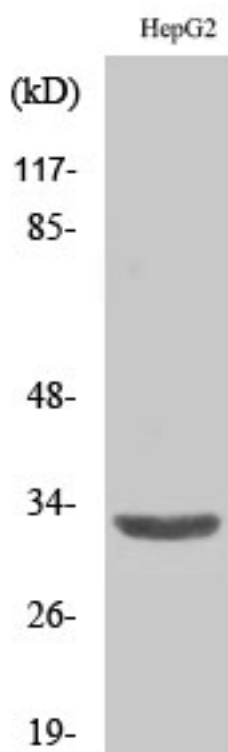
matters needing attention

Avoid repeated freezing and thawing!

Usage suggestions

This product can be used in immunological reaction related experiments. For more information, please consult technical personnel.

Products Images



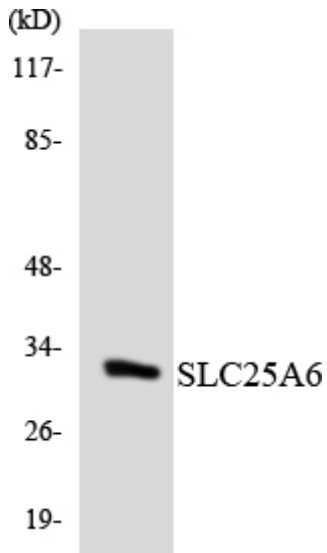
Western Blot analysis of various cells using ANT3 Polyclonal Antibody diluted at 1:2000



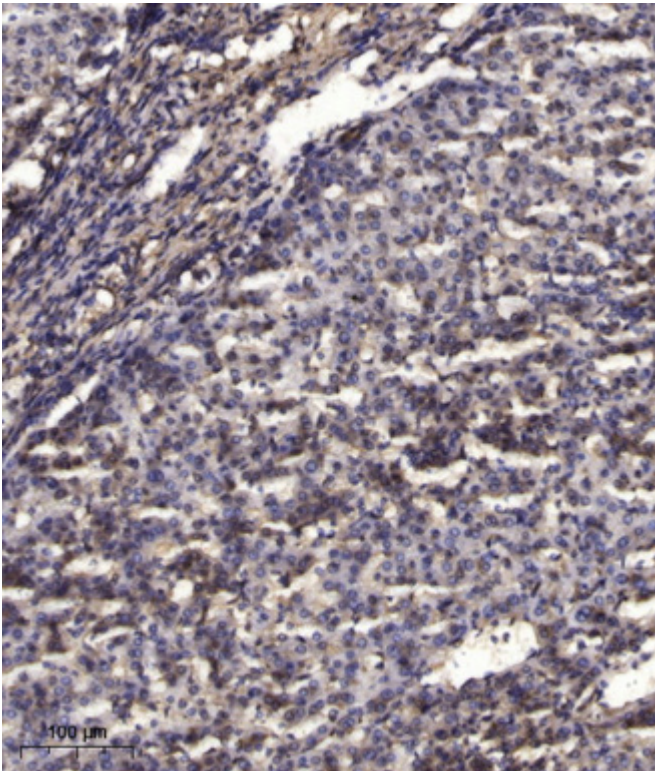
HepG2

Western blot analysis of lysates from HepG2 and 293 cells, using SLC25A6 Antibody. The lane on the right is blocked with the synthesized peptide.

ADT3--



Western blot analysis of the lysates from K562 cells using SLC25A6 antibody.



Immunohistochemical analysis of paraffin-embedded human liver cancer. 1, Antibody was diluted at 1:200(4° overnight). 2, Tris-EDTA,pH9.0 was used for antigen retrieval. 3,Secondary antibody was diluted at 1:200(room temperature, 45min).