



AChR α 5 Polyclonal Antibody

Catalog No	BYab-16371
Isotype	IgG
Reactivity	Human;Mouse;Rat;Monkey
Applications	WB;ELISA
Gene Name	CHRNA5
Protein Name	Neuronal acetylcholine receptor subunit alpha-5
Immunogen	The antiserum was produced against synthesized peptide derived from human AChR α 5. AA range:166-215
Specificity	AChR α 5 Polyclonal Antibody detects endogenous levels of AChR α 5 protein.
Formulation	Liquid in PBS containing 50% glycerol, 0.5% BSA and 0.02% sodium azide.
Source	Polyclonal, Rabbit,IgG
Purification	The antibody was affinity-purified from rabbit antiserum by affinity-chromatography using epitope-specific immunogen.
Dilution	Western Blot: 1/500 - 1/2000. ELISA: 1/10000. Not yet tested in other applications.
Concentration	1 mg/ml
Purity	≥90%
Storage Stability	-20°C/1 year
Synonyms	CHRNA5; NACHRA5; Neuronal acetylcholine receptor subunit alpha-5
Observed Band	53kD
Cell Pathway	Cell junction, synapse, postsynaptic cell membrane; Multi-pass membrane protein. Cell membrane; Multi-pass membrane protein.
Tissue Specificity	Eye,
Function	disease:Genetic variations in CHRNA5 may be associated with susceptibility to lung cancer type 2 (LNCR2) [MIM:612052].,function:After binding acetylcholine, the AChR responds by an extensive change in conformation that affects all subunits and leads to opening of an ion-conducting channel across the plasma membrane.,similarity:Belongs to the ligand-gated ionic channel (TC 1.A.9) family.,subunit:Neuronal AChR seems to be composed of two different type of subunits: alpha and non-alpha (beta).,
Background	The protein encoded by this gene is a nicotinic acetylcholine receptor subunit and a member of a superfamily of ligand-gated ion channels that mediate fast signal transmission at synapses. These receptors are thought to be

Nanjing BYabscience technology Co.,Ltd



heteropentamers composed of separate but similar subunits. Defects in this gene have been linked to susceptibility to lung cancer type 2 (LNCR2).[provided by RefSeq, Jun 2010],

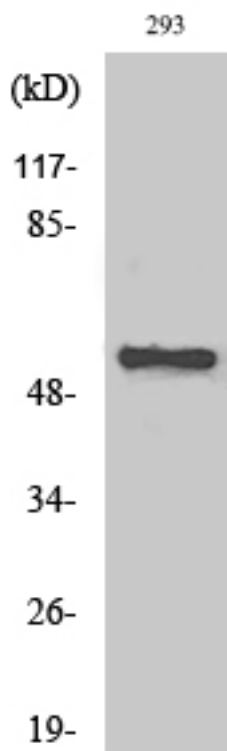
matters needing attention

Avoid repeated freezing and thawing!

Usage suggestions

This product can be used in immunological reaction related experiments. For more information, please consult technical personnel.

Products Images



Western Blot analysis of various cells using AChR α 5 Polyclonal Antibody



Western blot analysis of lysates from 293 cells, using AChR α 5 antibody.

AChR α 5

