



CaV α 2 δ 1 Polyclonal Antibody

Catalog No	BYab-16324
Isotype	IgG
Reactivity	Rat
Applications	WB;IHC;IF
Gene Name	CACNA2D1
Protein Name	Voltage-dependent calcium channel subunit alpha-2/delta-1 (Voltage-gated calcium channel subunit alpha-2/delta-1) [Cleaved into: Voltage-dependent calcium channel subunit alpha-2-1; Voltage-dependent
Immunogen	Synthetic Peptide of CaV α 2 δ 1
Specificity	The antibody detects endogenous CaV α 2 δ 1 protein
Formulation	Liquid in PBS containing 50% glycerol, 0.5% BSA and 0.02% sodium azide.
Source	Polyclonal, Rabbit,IgG
Purification	The antibody was affinity-purified from rabbit antiserum by affinity-chromatography using epitope-specific immunogen.
Dilution	WB: 1/500 - 1/2000. IHC: 1/100 - 1/300. ELISA: 1/40000.. IF 1:50-200
Concentration	1 mg/ml
Purity	≥90%
Storage Stability	-20°C/1 year
Synonyms	Voltage-dependent calcium channel subunit alpha-2/delta-1 (Voltage-gated calcium channel subunit alpha-2/delta-1) [Cleaved into: Voltage-dependent calcium channel subunit alpha-2-1; Voltage-dependent calcium channel subunit delta-1]
Observed Band	100-130kD
Cell Pathway	Membrane ; Single-pass type I membrane protein .
Tissue Specificity	Isoform 1 is expressed in skeletal muscle. Isoform 2 is expressed in the central nervous system. Isoform 2, isoform 4 and isoform 5 are expressed in neuroblastoma cells. Isoform 3, isoform 4 and isoform 5 are expressed in the aorta.
Function	domain:The MIDAS-like motif in the VWFA domain binds divalent metal cations and is required to promote trafficking of the alpha-1 (CACNA1) subunit to the plasma membrane by an integrin-like switch.,function:The alpha-2/delta subunit of voltage-dependent calcium channels regulates calcium current density and activation/inactivation kinetics of the calcium channel. Plays an important role in

Nanjing BYabscience technology Co.,Ltd



excitation-contraction coupling.,miscellaneous: Binds gabapentin, an antiepileptic drug.,PTM: Proteolytically processed into subunits alpha-2-1 and delta-1 that are disulfide-linked.,similarity: Belongs to the calcium channel subunit alpha-2/delta family.,similarity: Contains 1 cache domain.,similarity: Contains 1 VWFA domain.,subunit: Dimer formed of alpha-2-1 and delta-1 chains; disulfide-linked. Voltage-dependent calcium channels are multisubunit complexes, consisting of alpha-1 (CACNA1), alpha-2 (CACNA2D

Background

calcium voltage-gated channel auxiliary subunit alpha2delta 1(CACNA2D1) Homo sapiens The preproprotein encoded by this gene is cleaved into multiple chains that comprise the alpha-2 and delta subunits of the voltage-dependent calcium channel complex. Calcium channels mediate the influx of calcium ions into the cell upon membrane polarization. Mutations in this gene can cause cardiac deficiencies, including Brugada syndrome and short QT syndrome. Alternate splicing results in multiple transcript variants, some of which may lack the delta subunit portion. [provided by RefSeq, Nov 2014],

matters needing attention

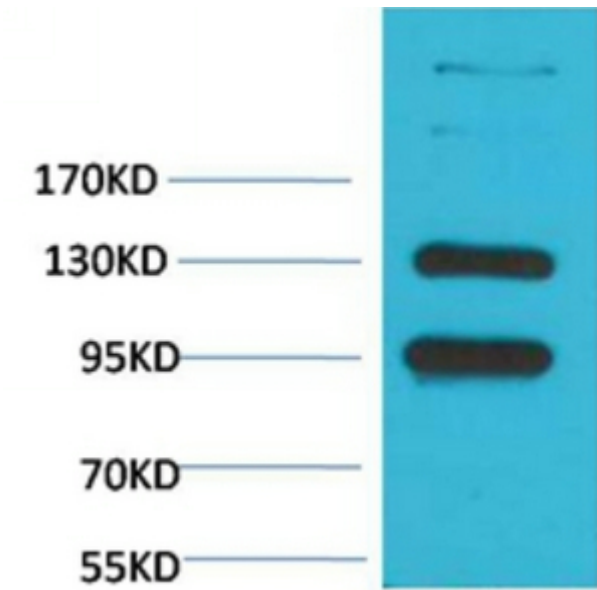
Avoid repeated freezing and thawing!

Usage suggestions

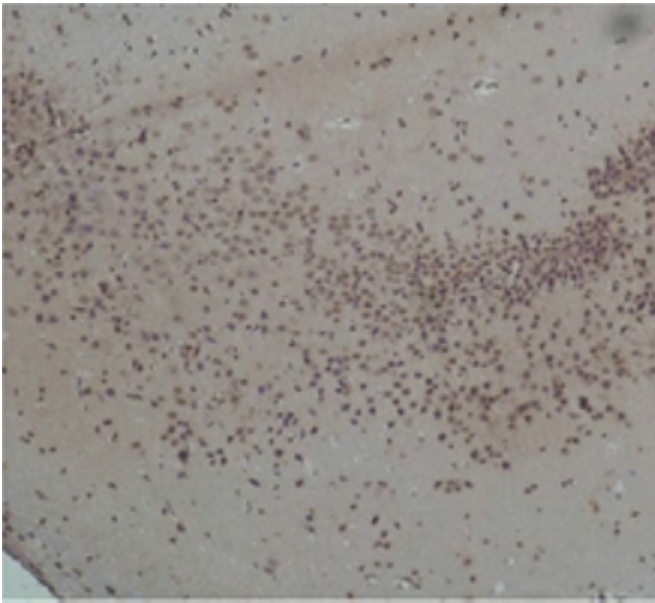
This product can be used in immunological reaction related experiments. For more information, please consult technical personnel.



Products Images



Western blot analysis of Rat Brain Tissue with CaV α 2 δ 1 Rabbit pAb diluted at 1:2,000.



Immunohistochemical analysis of paraffin-embedded Rat Brain Tissue using CaV α 2 δ 1 Rabbit pAb diluted at 1:200.