



# KCNN4 (SK4) Polyclonal Antibody

<b>Catalog No</b>	BYab-16315
<b>Isotype</b>	IgG
<b>Reactivity</b>	Human;Rat;Mouse
<b>Applications</b>	WB;IHC;IF
<b>Gene Name</b>	KCNN4
<b>Protein Name</b>	Intermediate conductance calcium-activated potassium channel protein 4 (SK4) (SKCa 4) (SKCa4) (IKCa1) (IK1) (KCa3.1) (KCa4) (Putative Gardos channel)
<b>Immunogen</b>	Synthetic Peptide of KCNN4 (SK4) AA range: 177-227
<b>Specificity</b>	KCNN4(SK4) protein(A247) detects endogenous levels of KCNN4(SK4)
<b>Formulation</b>	Liquid in PBS containing 50% glycerol, 0.5% BSA and 0.02% sodium azide.
<b>Source</b>	Polyclonal, Rabbit,IgG
<b>Purification</b>	The antibody was affinity-purified from rabbit antiserum by affinity-chromatography using specific immunogen.
<b>Dilution</b>	WB 1:1000-2000, IHC 1:50-100. IF 1:50-200
<b>Concentration</b>	1 mg/ml
<b>Purity</b>	≥90%
<b>Storage Stability</b>	-20°C/1 year
<b>Synonyms</b>	KCNN4; IK1; IKCA1; KCA4; SK4; Intermediate conductance calcium-activated potassium channel protein 4; SK4; SKCa 4; SKCa4; IKCa1; IK1; KCa3.1; KCa4; Putative Gardos channel
<b>Observed Band</b>	50kD
<b>Cell Pathway</b>	Cell membrane ; Multi-pass membrane protein .
<b>Tissue Specificity</b>	Widely expressed in non-excitabile tissues.
<b>Function</b>	function:Forms a voltage-independent potassium channel that is activated by intracellular calcium. Activation is followed by membrane hyperpolarization which promotes calcium influx. The channel is blocked by clotrimazole and charybdotoxin but is insensitive to apamin.,induction:Up-regulated by phorbol myristate acetate (PMA) and phytohemagglutinin (PHA) in T-cells.,similarity:Belongs to the potassium channel KCNN family.,subunit:Heterotetramer of potassium channel proteins (Probable). Interacts with MTMR6.,tissue specificity:Widely expressed in non-excitabile tissues.,

Nanjing BYabscience technology Co.,Ltd



**Background**

potassium calcium-activated channel subfamily N member 4(KCNN4) Homo sapiens The protein encoded by this gene is part of a potentially heterotetrameric voltage-independent potassium channel that is activated by intracellular calcium. Activation is followed by membrane hyperpolarization, which promotes calcium influx. The encoded protein may be part of the predominant calcium-activated potassium channel in T-lymphocytes. This gene is similar to other KCNN family potassium channel genes, but it differs enough to possibly be considered as part of a new subfamily. [provided by RefSeq, Jul 2008],

**matters needing attention**

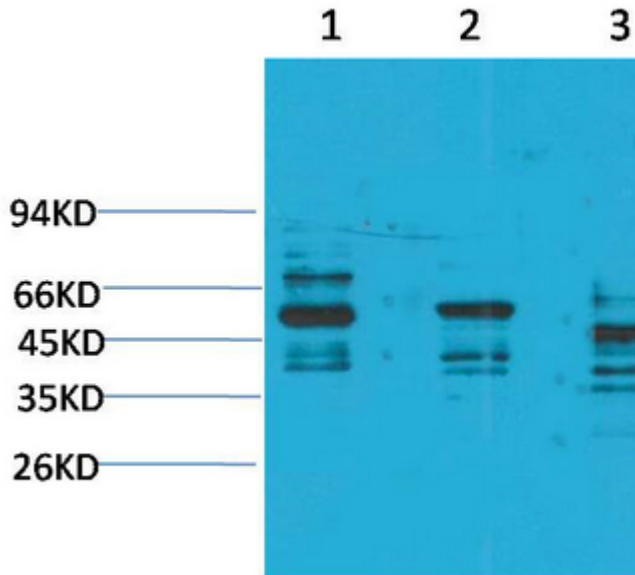
Avoid repeated freezing and thawing!

**Usage suggestions**

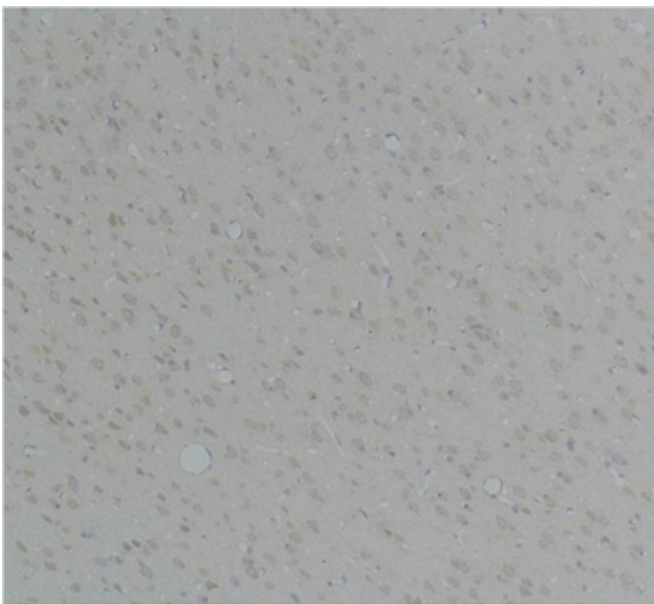
This product can be used in immunological reaction related experiments. For more information, please consult technical personnel.



## Products Images



Western blot analysis of 1) Rat Brain Tissue, 2) Mouse Brain Tissue, 3) K562, 4) HepG2 with KCNN4(SK4) Rabbit pAb diluted at 1:2,000.



Immunohistochemical analysis of paraffin-embedded Rat Brain Tissue using KCNN4(SK4) Rabbit pAb diluted at 1:200.