



L-type Ca⁺⁺ CP γ 4 Polyclonal Antibody

Catalog No	BYab-16310
Isotype	IgG
Reactivity	Human;Mouse;Rat
Applications	WB;IHC;IF
Gene Name	CACNG4
Protein Name	Voltage-dependent calcium channel gamma-4 subunit
Immunogen	Synthetic Peptide of L-type Ca ⁺⁺ CP γ 4 AA range: 120-200
Specificity	The antibody detects endogenous L-type Ca ⁺⁺ CP γ 4 protein.
Formulation	PBS, pH 7.4, containing 0.5%BSA, 0.02% sodium azide as Preservative and 50% Glycerol.
Source	Polyclonal, Rabbit,IgG
Purification	The antibody was affinity-purified from rabbit antiserum by affinity-chromatography using epitope-specific immunogen.
Dilution	WB: 1:1000-2000 IHC: 1:200-500. IF 1:50-200
Concentration	1 mg/ml
Purity	≥90%
Storage Stability	-20°C/1 year
Synonyms	CACNG4; Voltage-dependent calcium channel gamma-4 subunit; Neuronal voltage-gated calcium channel gamma-4 subunit; Transmembrane AMPAR regulatory protein gamma-4; TARP gamma-4
Observed Band	35kD
Cell Pathway	Cell membrane ; Multi-pass membrane protein .
Tissue Specificity	Detected in heart left ventricle.
Function	function:Thought to stabilize the calcium channel in an inactivated (closed) state.,similarity:Belongs to the PMP-22/EMP/MP20 family. CACNG subfamily.,subunit:The L-type calcium channel is composed of five subunits: alpha-1, alpha-2/delta, beta and gamma.,
Background	calcium voltage-gated channel auxiliary subunit gamma 4(CACNG4) Homo sapiens The protein encoded by this gene is a type I transmembrane AMPA receptor regulatory protein (TARP). TARPs regulate both trafficking and channel gating of the AMPA receptors. This gene is part of a functionally diverse

Nanjing BYabscience technology Co.,Ltd



eight-member protein subfamily of the PMP-22/EMP/MP20 family and is located in a cluster with two family members, a type II TARP and a calcium channel gamma subunit. [provided by RefSeq, Dec 2010],

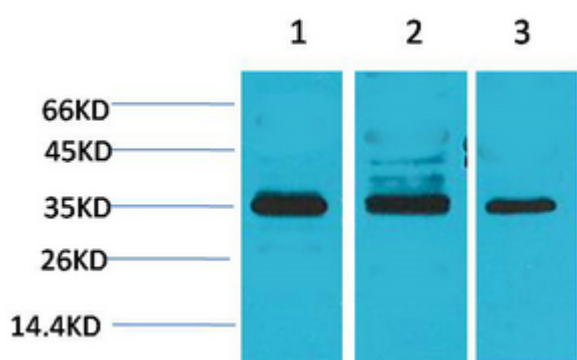
matters needing attention

Avoid repeated freezing and thawing!

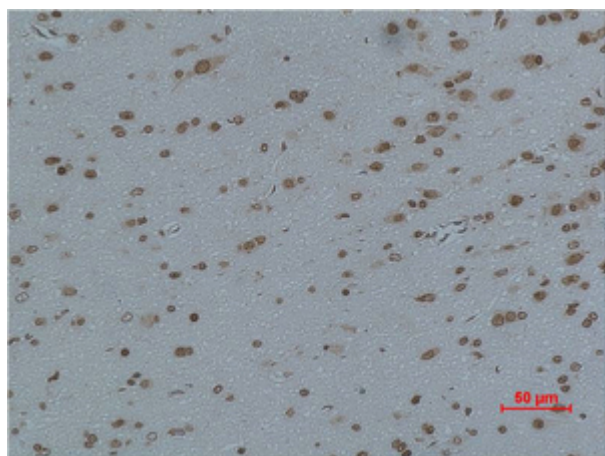
Usage suggestions

This product can be used in immunological reaction related experiments. For more information, please consult technical personnel.

Products Images



Western blot analysis of 1) Human Brain Tissue, 2) Mouse Brain Tissue, 3) Rat Brain Tissue using L-type Ca⁺⁺ CP γ 4 Polyclonal Antibody. Secondary antibody(catalog#:RS0002) was diluted at 1:20000



Immunohistochemical analysis of paraffin-embedded Rat Brain Tissue using L-type Ca⁺⁺ CP γ 4 Polyclonal Antibody.