



Thrombospondin 1 Polyclonal Antibody

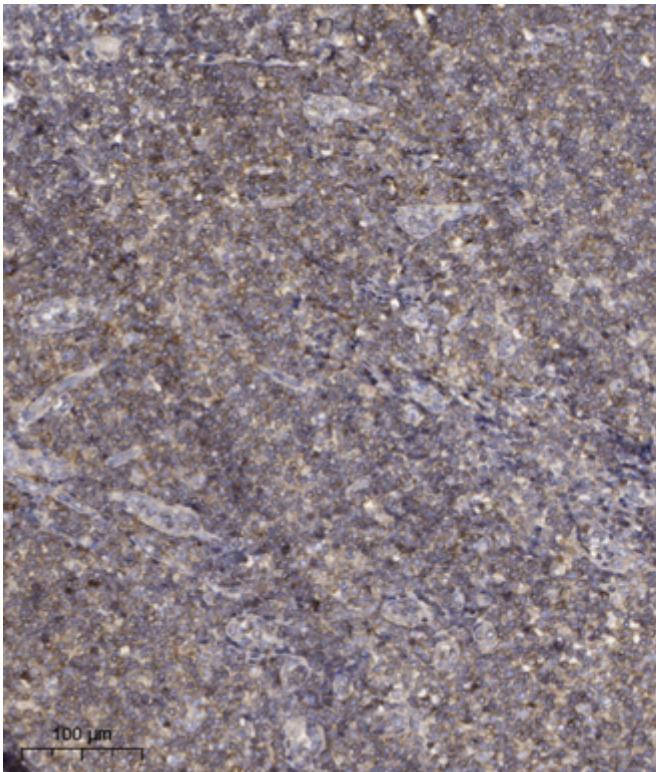
Catalog No	BYab-16302
Isotype	IgG
Reactivity	Human; Mouse; Rat
Applications	WB;IHC
Gene Name	THBS1 TSP TSP1
Protein Name	Thrombospondin 1
Immunogen	Synthesized peptide derived from human Thrombospondin 1
Specificity	This antibody detects endogenous levels of human Thrombospondin 1
Formulation	Liquid in PBS containing 50% glycerol, 0.5% BSA and 0.02% sodium azide.
Source	Polyclonal, Rabbit,IgG
Purification	The antibody was affinity-purified from mouse ascites by affinity-chromatography using specific immunogen.
Dilution	WB 1:500-2000;IHC-p 1:50-300
Concentration	1 mg/ml
Purity	≥90%
Storage Stability	-20°C/1 year
Synonyms	Thrombospondin-1
Observed Band	130kD
Cell Pathway	Secreted . Cell surface . Secreted, extracellular space, extracellular matrix . Endoplasmic reticulum . Sarcoplasmic reticulum . Secreted by thrombin-activated platelets and binds to the cell surface in the presence of extracellular Ca(2+) (PubMed:6777381). Incorporated into the extracellular matrix of fibroblasts (PubMed:6341993). Also detected in the endoplasmic reticulum and sarcoplasmic reticulum where it plays a role in the ER stress response (By similarity). .
Tissue Specificity	Aorta endothelial cell,Endothelial cell,Liver,Plasma,Platelet,Saliva,
Function	function:Adhesive glycoprotein that mediates cell-to-cell and cell-to-matrix interactions. Can bind to fibrinogen, fibronectin, laminin, type V collagen and integrins alpha-V/beta-1, alpha-V/beta-3 and alpha-IIb/beta-3.,similarity:Belongs to the thrombospondin family.,similarity:Contains 1 TSP C-terminal (TSPC) domain.,similarity:Contains 1 TSP N-terminal (TSPN) domain.,similarity:Contains 1 VWFC domain.,similarity:Contains 3 EGF-like domains.,similarity:Contains 3 TSP type-1 domains.,similarity:Contains 8 TSP type-3 repeats.,subunit:Homotrimer; disulfide-linked.,

Nanjing BYabscience technology Co.,Ltd



Background	thrombospondin 1 (THBS1) Homo sapiens The protein encoded by this gene is a subunit of a disulfide-linked homotrimeric protein. This protein is an adhesive glycoprotein that mediates cell-to-cell and cell-to-matrix interactions. This protein can bind to fibrinogen, fibronectin, laminin, type V collagen and integrins alpha-V/beta-1. This protein has been shown to play roles in platelet aggregation, angiogenesis, and tumorigenesis. [provided by RefSeq, Jul 2008],
matters needing attention	Avoid repeated freezing and thawing!
Usage suggestions	This product can be used in immunological reaction related experiments. For more information, please consult technical personnel.

Products Images



Immunohistochemical analysis of paraffin-embedded human tonsil. 1, Antibody was diluted at 1:200(4° overnight). 2, Tris-EDTA,pH9.0 was used for antigen retrieval. 3,Secondary antibody was diluted at 1:200(room temperature, 45min).