



# Flotillin-1 Polyclonal Antibody

|                           |   |
|---------------------------|---|
| <b>Catalog No</b>         | BYab-16301  |
| <b>Isotype</b>            | IgG   |
| <b>Reactivity</b>         | Human; Mouse; Rat   |
| <b>Applications</b>       | WB; ELISA   |
| <b>Gene Name</b>          | FLOT1   |
| <b>Protein Name</b>       | Flotillin-1   |
| <b>Immunogen</b>          | Synthesized peptide derived from human Flotillin-1  |
| <b>Specificity</b>        | This antibody detects endogenous levels of human Flotillin-1  |
| <b>Formulation</b>        | Liquid in PBS containing 50% glycerol, 0.5% BSA and 0.02% sodium azide.   |
| <b>Source</b>             | Polyclonal, Rabbit,IgG  |
| <b>Purification</b>       | The antibody was affinity-purified from mouse ascites by affinity-chromatography using specific immunogen.  |
| <b>Dilution</b>           | WB 1:500-2000, ELISA(peptide)1:5000-20000   |
| <b>Concentration</b>      | 1 mg/ml   |
| <b>Purity</b>             | ≥90%  |
| <b>Storage Stability</b>  | -20°C/1 year  |
| <b>Synonyms</b>           | Flotillin-1   |
| <b>Observed Band</b>      | 48kD  |
| <b>Cell Pathway</b>       | Cell membrane; Peripheral membrane protein . Endosome . Membrane, caveola ; Peripheral membrane protein . Melanosome . Membrane raft . Identified by mass spectrometry in melanosome fractions from stage I to stage IV (PubMed:17081065). Membrane-associated protein of caveola (By similarity) . .   |
| <b>Tissue Specificity</b> | Adipose tissue,Adrenal gland,Lung,Peripheral blood leukocyte,Umbilical cord blood,  |
| <b>Function</b>           | function:May act as a scaffolding protein within caveolar membranes, functionally participating in formation of caveolae or caveolae-like vesicles.,similarity:Belongs to the band 7/mec-2 family. Flotillin subfamily.,subcellular location:Membrane-associated protein of caveolae. Identified by mass spectrometry in melanosome fractions from stage I to stage IV.,subunit:Heterooligomeric complex of flotillin-1 and flotillin-2 and caveolin-1 and caveolin-2., |
| <b>Background</b>         | This gene encodes an protein that localizes to the caveolae, which are small domains on the inner cell membranes. This protein plays a role in vesicle  |

**Nanjing BYabscience technology Co.,Ltd**



trafficking and cell morphology. Alternative splicing results in multiple transcript variants. [provided by RefSeq, Jan 2016],

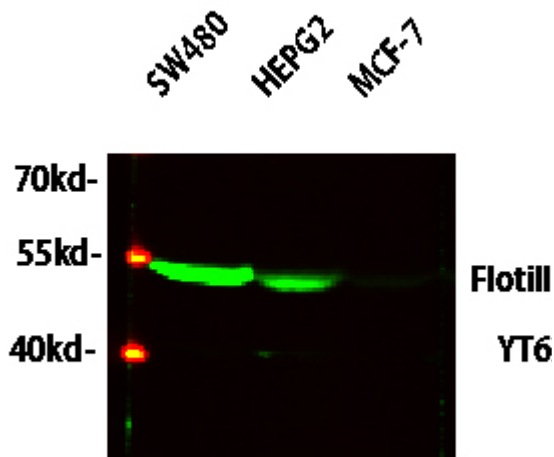
**matters needing attention**

Avoid repeated freezing and thawing!

**Usage suggestions**

This product can be used in immunological reaction related experiments. For more information, please consult technical personnel.

## Products Images



Western blot analysis of various lysates, primary antibody was diluted at 1:1000, 4° over night, secondary antibody(cat: RS23920)was diluted at 1:10000, 37° 1hour.