



Endoplasmin Polyclonal Antibody

Catalog No	BYab-16289
Isotype	IgG
Reactivity	Human;Mouse
Applications	WB;IHC;IF;ELISA
Gene Name	HSP90B1
Protein Name	Endoplasmin
Immunogen	The antiserum was produced against synthesized peptide derived from human GRP94. AA range:754-803
Specificity	Endoplasmin Polyclonal Antibody detects endogenous levels of Endoplasmin protein.
Formulation	Liquid in PBS containing 50% glycerol, 0.5% BSA and 0.02% sodium azide.
Source	Polyclonal, Rabbit,IgG
Purification	The antibody was affinity-purified from rabbit antiserum by affinity-chromatography using epitope-specific immunogen.
Dilution	Western Blot: 1/500 - 1/2000. Immunohistochemistry: 1/100 - 1/300. Immunofluorescence: 1/200 - 1/1000. ELISA: 1/20000. Not yet tested in other applications.
Concentration	1 mg/ml
Purity	≥90%
Storage Stability	-20°C/1 year
Synonyms	HSP90B1; GRP94; TRA1; Endoplasmin; 94 kDa glucose-regulated protein; GRP-94; Heat shock protein 90 kDa beta member 1; Tumor rejection antigen 1; gp96 homolog
Observed Band	92kD
Cell Pathway	Endoplasmic reticulum lumen . Sarcoplasmic reticulum lumen . Melanosome . Identified by mass spectrometry in melanosome fractions from stage I to stage IV.
Tissue Specificity	Blood,Brain,Liver,Lung,Platelet,Skin,
Function	function:Molecular chaperone that functions in the processing and transport of secreted proteins. Has ATPase activity.,PTM:Phosphorylated.,similarity:Belongs to the heat shock protein 90 family.,subcellular location:Identified by mass spectrometry in melanosome fractions from stage I to stage IV.,subunit:Homodimer; disulfide-linked. Component of an EIF2 complex at least composed of CUGBP1, CALR, CALR3, EIF2S1, EIF2S2, HSP90B1 and HSPA5

Nanjing BYabscience technology Co.,Ltd



(By similarity). Part a large chaperone multiprotein complex comprising CABP1, DNAJB11, HSP90B1, HSPA5, HYOU, PDIA2, PDIA4, PPIB, SDF2L1, UGT1A1 and very small amounts of ERP29, but not, or at very low levels, CALR nor CANX.,

Background

This gene encodes a member of a family of adenosine triphosphate(ATP)-metabolizing molecular chaperones with roles in stabilizing and folding other proteins. The encoded protein is localized to melanosomes and the endoplasmic reticulum. Expression of this protein is associated with a variety of pathogenic states, including tumor formation. There is a microRNA gene located within the 5' exon of this gene. There are pseudogenes for this gene on chromosomes 1 and 15. [provided by RefSeq, Aug 2012],

matters needing attention

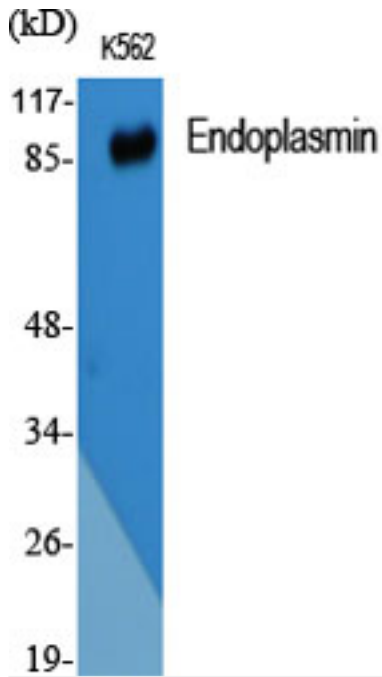
Avoid repeated freezing and thawing!

Usage suggestions

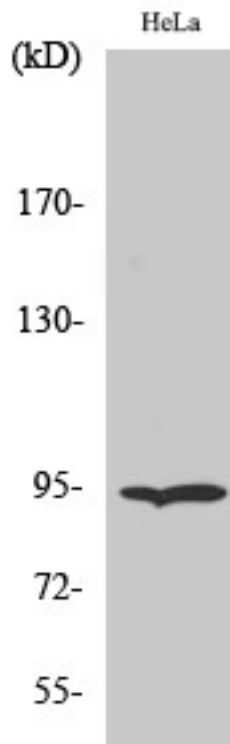
This product can be used in immunological reaction related experiments. For more information, please consult technical personnel.



Products Images

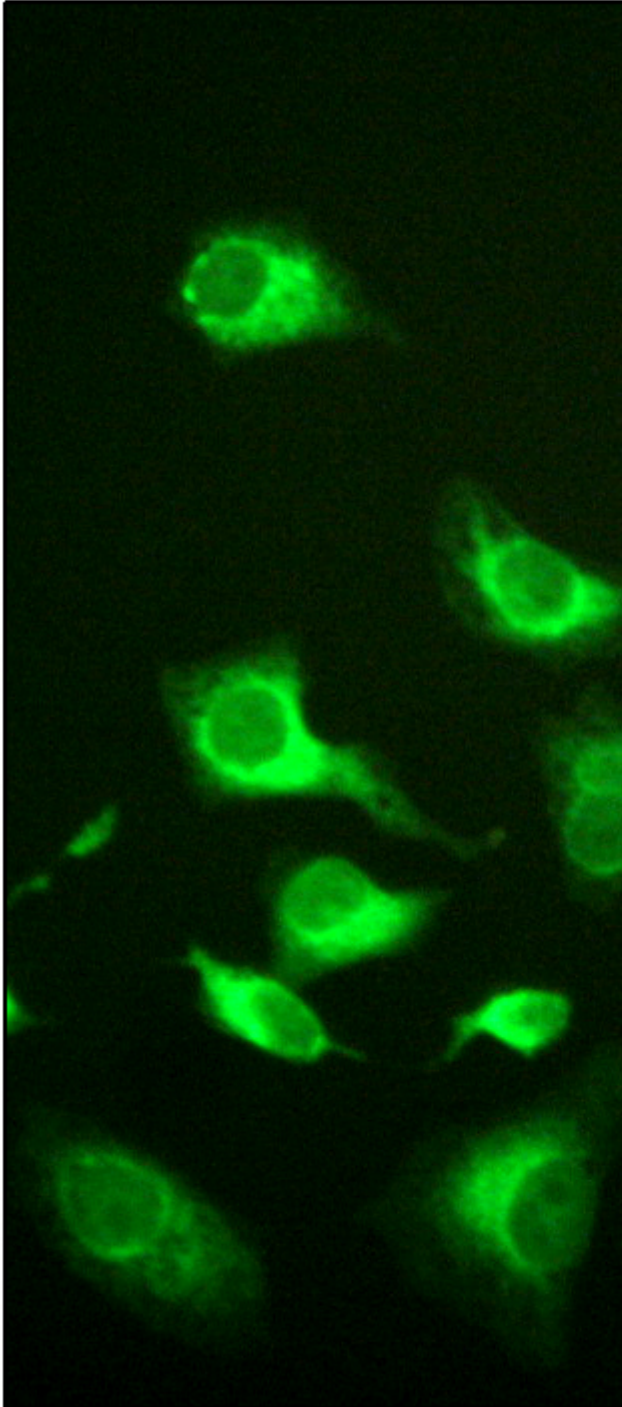


Western Blot analysis of various cells using Endoplasmin Polyclonal Antibody diluted at 1:1000

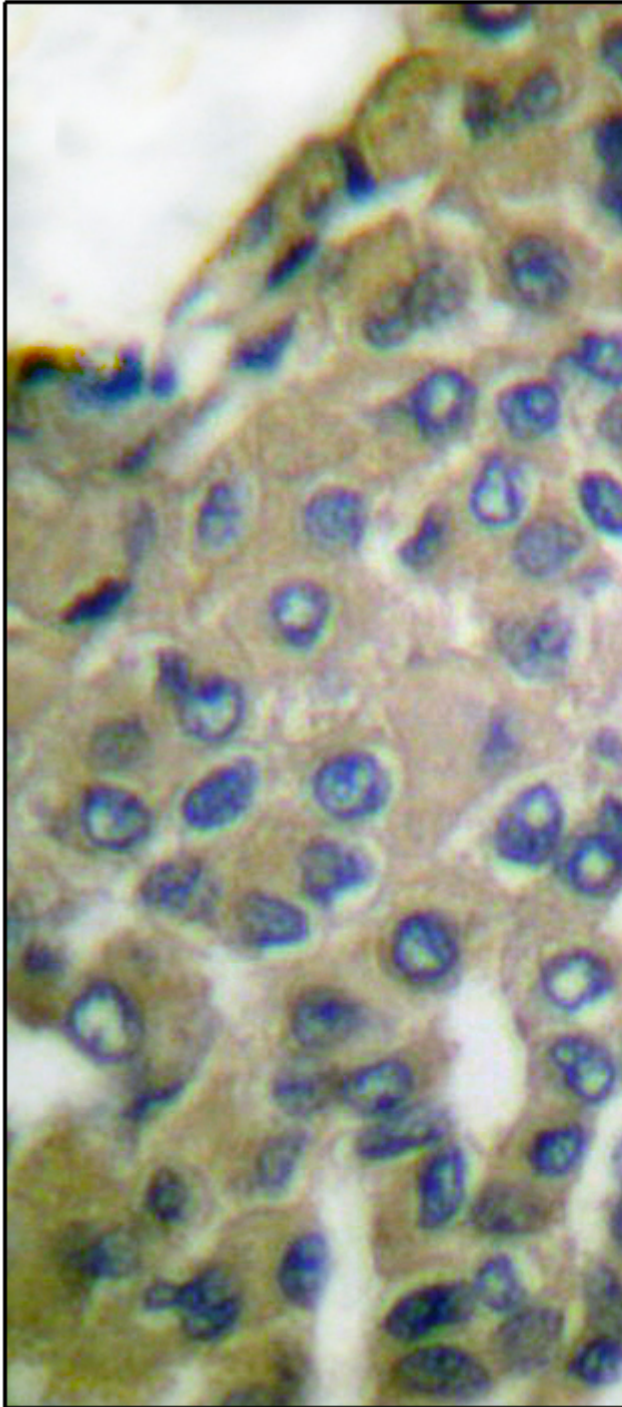


Western Blot analysis of HeLa cells using Endoplasmin Polyclonal Antibody diluted at 1:1000

Nanjing BYabscience technology Co.,Ltd



Immunofluorescence analysis of HepG2 cells, using GRP94 Antibody. The picture on the right is blocked with the synthesized peptide.



Immunohistochemistry analysis of paraffin-embedded human breast carcinoma tissue, using GRP94 Antibody. The picture on the right is blocked with the synthesized peptide.



Western blot analysis of lysates from SKOV3 cells, using GRP94 Antibody. The lane on the right is blocked with the synthesized peptide.

Grp94 --

