



# HSC 70 Polyclonal Antibody

<b>Catalog No</b>	BYab-16281
<b>Isotype</b>	IgG
<b>Reactivity</b>	Human;Mouse;Rat
<b>Applications</b>	WB;IHC;IF
<b>Gene Name</b>	HSPA8
<b>Protein Name</b>	Heat shock cognate 71 kDa protein
<b>Immunogen</b>	Synthesized peptide derived from the Internal region of human HSC 70. AA range: 588-638
<b>Specificity</b>	The antibody detects endogenous HSC 70 protein.
<b>Formulation</b>	PBS, pH 7.4, containing 0.5%BSA, 0.02% sodium azide as Preservative and 50% Glycerol.
<b>Source</b>	Polyclonal, Rabbit,IgG
<b>Purification</b>	The antibody was affinity-purified from rabbit antiserum by affinity-chromatography using epitope-specific immunogen.
<b>Dilution</b>	WB: 1/500 - 1/2000.IHC-p:1:50-300.. IF 1:50-200
<b>Concentration</b>	1 mg/ml
<b>Purity</b>	≥90%
<b>Storage Stability</b>	-20°C/1 year
<b>Synonyms</b>	HSPA8; HSC70; HSP73; HSPA10; Heat shock cognate 71 kDa protein; Heat shock 70 kDa protein 8
<b>Observed Band</b>	70-72kD
<b>Cell Pathway</b>	Cytoplasm. Melanosome. Nucleus, nucleolus. Cell membrane. Localized in cytoplasmic mRNP granules containing untranslated mRNAs. Translocates rapidly from the cytoplasm to the nuclei, and especially to the nucleoli, upon heat shock.
<b>Tissue Specificity</b>	Ubiquitous.
<b>Function</b>	function:Chaperone. Isoform 2 may function as an endogenous inhibitory regulator of HSC70 by competing the co-chaperones.,induction:Constitutively synthesized.,PTM:Phosphorylated upon DNA damage, probably by ATM or ATR.,similarity:Belongs to the heat shock protein 70 family.,subcellular location:Translocates rapidly from the cytoplasm to the nuclei, and especially to the nucleoli, upon heat shock. Identified by mass spectrometry in melanosome fractions from stage I to stage IV.,subunit:Interacts with HSPH1/HSP105.

Nanjing BYabscience technology Co.,Ltd



Interacts with IRAK1BP1 (By similarity). Interacts with PACRG and TSC2.  
Interacts with SV40 VP1.,tissue specificity:Ubiquitous.,

### Background

This gene encodes a member of the heat shock protein 70 family, which contains both heat-inducible and constitutively expressed members. This protein belongs to the latter group, which are also referred to as heat-shock cognate proteins. It functions as a chaperone, and binds to nascent polypeptides to facilitate correct folding. It also functions as an ATPase in the disassembly of clathrin-coated vesicles during transport of membrane components through the cell. Alternatively spliced transcript variants encoding different isoforms have been found for this gene. [provided by RefSeq, Aug 2011],

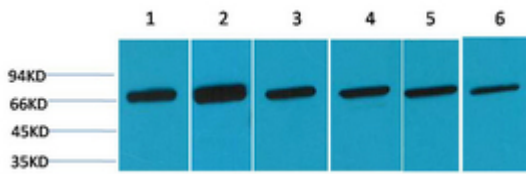
### matters needing attention

Avoid repeated freezing and thawing!

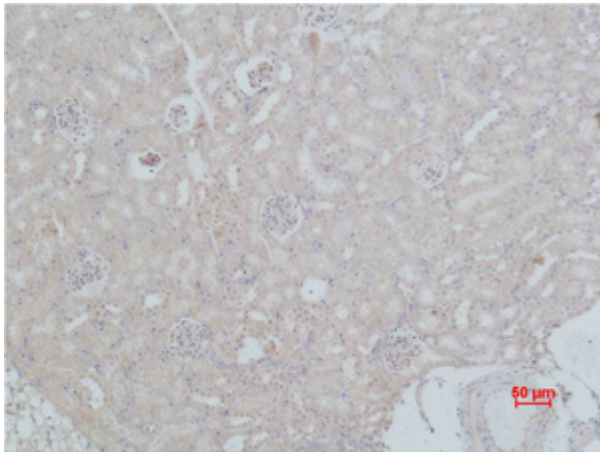
### Usage suggestions

This product can be used in immunological reaction related experiments. For more information, please consult technical personnel.

## Products Images



Western blot analysis of 1) HeLa, 2) HepG2, 3) Raw, 4) Mouse Brain, 5) Rat Brain, 6) Rat Liver using HSC 70 Polyclonal Antibody. Secondary antibody(catalog#:RS0002) was diluted at 1:20000



Immunohistochemical analysis of paraffin-embedded Mouse Kidney Tissue using HSC 70 Polyclonal Antibody.