



# RAB25 rabbit pAb

<b>Catalog No</b>	BYab-16266
<b>Isotype</b>	IgG
<b>Reactivity</b>	Human;Rat;Mouse;
<b>Applications</b>	WB;ELISA;IHC
<b>Gene Name</b>	RAB25 CATX8
<b>Protein Name</b>	RAB25
<b>Immunogen</b>	Synthesized peptide derived from human RAB25 AA range: 80-160
<b>Specificity</b>	This antibody detects endogenous levels of Human RAB25
<b>Formulation</b>	Liquid in PBS containing 50% glycerol, 0.5% BSA and 0.02% sodium azide.
<b>Source</b>	Polyclonal, Rabbit,IgG
<b>Purification</b>	The antibody was affinity-purified from rabbit serum by affinity-chromatography using specific immunogen.
<b>Dilution</b>	WB 1:500-2000;IHC-p 1:50-300; ELISA 2000-20000
<b>Concentration</b>	1 mg/ml
<b>Purity</b>	≥90%
<b>Storage Stability</b>	-20°C/1 year
<b>Synonyms</b>	Ras-related protein Rab-25 (CATX-8)
<b>Observed Band</b>	
<b>Cell Pathway</b>	Cell membrane ; Lipid-anchor ; Cytoplasmic side . Cell projection, pseudopodium membrane . Cytoplasmic vesicle . Colocalizes with integrin alpha-V/beta-1 in vesicles at the pseudopodial tips. .
<b>Tissue Specificity</b>	Expressed in ovarian epithelium (NOE) and breast tissue. Expressed in ovarian cancer; expression is increased relative to NOE cells. Expression in ovarian cancer is stage dependent, with stage III and stage IV showing higher levels than early stage cancers. Expressed in breast cancer; expression is increased relative to normal breast tissue.
<b>Function</b>	function:May selectively regulate the apical recycling and/or transcytotic pathways.,similarity:Belongs to the small GTPase superfamily. Rab family.,subunit:Interacts with RAB11FIP1, RAB11FIP2, RAB11FIP3 and RAB11FIP4.,
<b>Background</b>	The protein encoded by this gene is a member of the RAS superfamily of small GTPases. The encoded protein is involved in membrane trafficking and cell survival. This gene has been found to be a tumor suppressor and an oncogene,

**Nanjing BYabscience technology Co.,Ltd**



depending on the context. Two variants, one protein-coding and the other not, have been found for this gene. [provided by RefSeq, Nov 2015],

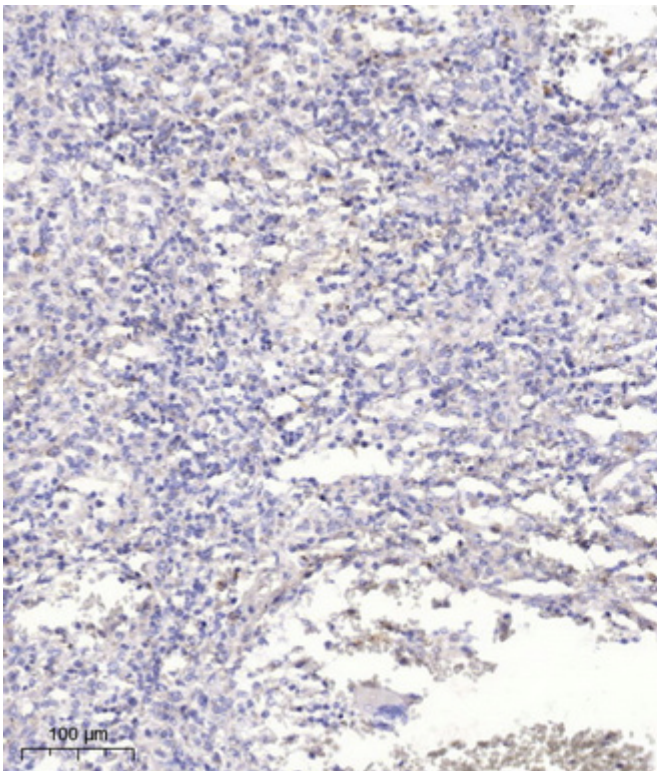
**matters needing attention**

Avoid repeated freezing and thawing!

**Usage suggestions**

This product can be used in immunological reaction related experiments. For more information, please consult technical personnel.

## Products Images



Immunohistochemical analysis of paraffin-embedded human spleen. 1, Antibody was diluted at 1:200(4° overnight). 2, Tris-EDTA,pH9.0 was used for antigen retrieval. 3,Secondary antibody was diluted at 1:200(room temperature, 45min).