



RASSF8 Polyclonal Antibody

Catalog No	BYab-16262
Isotype	IgG
Reactivity	Human;Rat
Applications	WB;ELISA
Gene Name	RASSF8
Protein Name	Ras association domain-containing protein 8
Immunogen	Synthesized peptide derived from RASSF8 . at AA range: 60-140
Specificity	RASSF8 Polyclonal Antibody detects endogenous levels of RASSF8 protein.
Formulation	Liquid in PBS containing 50% glycerol, 0.5% BSA and 0.02% sodium azide.
Source	Polyclonal, Rabbit,IgG
Purification	The antibody was affinity-purified from rabbit antiserum by affinity-chromatography using epitope-specific immunogen.
Dilution	Western Blot: 1/500 - 1/2000. ELISA: 1/40000. Not yet tested in other applications.
Concentration	1 mg/ml
Purity	≥90%
Storage Stability	-20°C/1 year
Synonyms	RASSF8; C12orf2; Ras association domain-containing protein 8; Carcinoma-associated protein HOJ-1
Observed Band	48kD
Cell Pathway	
Tissue Specificity	Widely expressed as a 6.2 kb transcript. A 2.2 kb alternatively spliced transcript is expressed exclusively in testis.
Function	disease:A chromosomal aberration involving RASSF8 is found in a complex type of synpolydactyly, also referred to as 3/3-prime/4 synpolydactyly associated with metacarpal and metatarsal synostoses [MIM:608180]. Reciprocal translocation t(12;22)(p11.2;q13.3) with FBLN1.,similarity:Contains 1 Ras-associating domain.,tissue specificity:Widely expressed as a 6.2 kb transcript. A 2.2 kb alternatively spliced transcript is expressed exclusively in testis.,
Background	This gene encodes a member of the Ras-association domain family (RASSF) of tumor suppressor proteins. This gene is essential for maintaining adherens junction function in epithelial cells and has a role in epithelial cell migration. It is a lung tumor suppressor gene candidate. A chromosomal translocation

Nanjing BYabscience technology Co.,Ltd



t(12;22)(p11.2;q13.3) leading to the fusion of this gene and the FBLN1 gene is found in a complex type of synpolydactyly. Multiple alternatively spliced transcript variants encoding different isoforms have been found for this gene. [provided by RefSeq, May 2011],

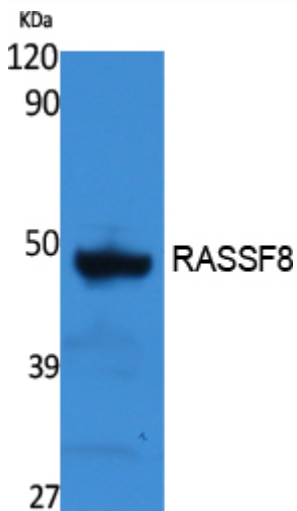
matters needing attention

Avoid repeated freezing and thawing!

Usage suggestions

This product can be used in immunological reaction related experiments. For more information, please consult technical personnel.

Products Images



Western Blot analysis of extracts from rat stomach, using RASSF8 Polyclonal Antibody. Secondary antibody(catalog#:RS0002) was diluted at 1:20000