



Rab 26 Polyclonal Antibody

Catalog No	BYab-16261
Isotype	IgG
Reactivity	Human;Mouse;Rat
Applications	WB;IHC;IF;ELISA
Gene Name	RAB26
Protein Name	Ras-related protein Rab-26
Immunogen	Synthesized peptide derived from Rab 26 . at AA range: 180-256
Specificity	Rab 26 Polyclonal Antibody detects endogenous levels of Rab 26 protein.
Formulation	Liquid in PBS containing 50% glycerol, 0.5% BSA and 0.02% sodium azide.
Source	Polyclonal, Rabbit,IgG
Purification	The antibody was affinity-purified from rabbit antiserum by affinity-chromatography using epitope-specific immunogen.
Dilution	WB: 1/500 - 1/2000. IHC-p: 1:100-300 ELISA: 1/40000.. IF 1:50-200
Concentration	1 mg/ml
Purity	≥90%
Storage Stability	-20°C/1 year
Synonyms	RAB26; Ras-related protein Rab-26
Observed Band	27kD
Cell Pathway	Golgi apparatus membrane ; Lipid-anchor ; Cytoplasmic side . Cytoplasmic vesicle, secretory vesicle membrane ; Lipid-anchor ; Cytoplasmic side . Not localized at the plasma membrane (By similarity). Inhibition of S-geranylgeranyl cysteine formation abolishes membrane location. .
Tissue Specificity	Predominantly expressed in brain.
Function	function:Participates in exocrine secretion: regulates the secretion of acinar granules in the parotid gland.,similarity:Belongs to the small GTPase superfamily. Rab family.,tissue specificity:Predominantly expressed in brain.,
Background	Members of the RAB protein family, including RAB26, are important regulators of vesicular fusion and trafficking. The RAB family of small G proteins regulates intercellular vesicle trafficking, including exocytosis, endocytosis, and recycling (summary by Seki et al., 2000 [PubMed 11043516]).[supplied by OMIM, Nov 2010],

Nanjing BYabscience technology Co.,Ltd



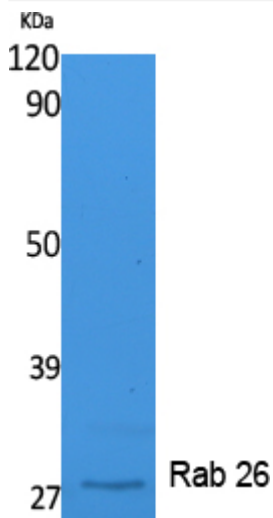
matters needing attention

Avoid repeated freezing and thawing!

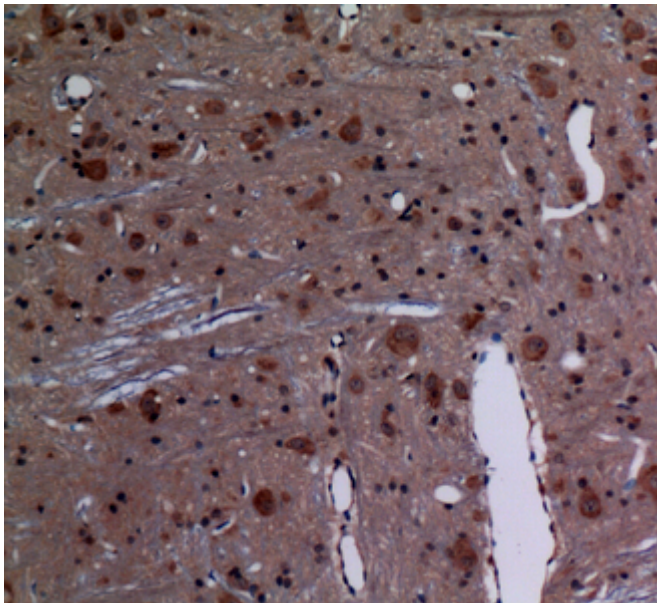
Usage suggestions

This product can be used in immunological reaction related experiments. For more information, please consult technical personnel.

Products Images

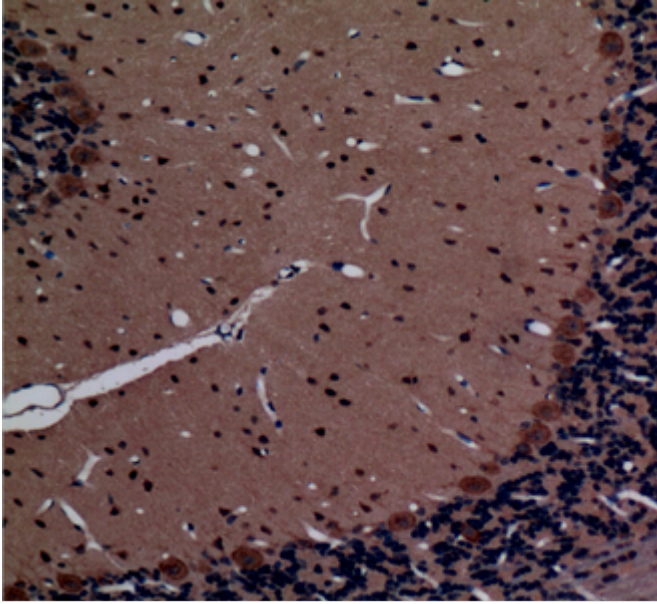


Western Blot analysis of extracts from K562 cells, using Rab 26 Polyclonal Antibody. Secondary antibody(catalog#:RS0002) was diluted at 1:20000



Immunohistochemical analysis of paraffin-embedded rat-brain, antibody was diluted at 1:100

Nanjing BYabscience technology Co.,Ltd



Immunohistochemical analysis of paraffin-embedded rat-brain, antibody was diluted at 1:100