



SMF Polyclonal Antibody

Catalog No	BYab-16251
Isotype	IgG
Reactivity	Human;Rat;Mouse;
Applications	IHC;IF;ELISA
Gene Name	HMGXB3
Protein Name	HMG domain-containing protein 3
Immunogen	The antiserum was produced against synthesized peptide derived from human HMGXB3. AA range:131-180
Specificity	SMF Polyclonal Antibody detects endogenous levels of SMF protein.
Formulation	Liquid in PBS containing 50% glycerol, 0.5% BSA and 0.02% sodium azide.
Source	Polyclonal, Rabbit,IgG
Purification	The antibody was affinity-purified from rabbit antiserum by affinity-chromatography using epitope-specific immunogen.
Dilution	IHC: 1/100 - 1/300. ELISA: 1/20000.. IF 1:50-200
Concentration	1 mg/ml
Purity	≥90%
Storage Stability	-20°C/1 year
Synonyms	HMGXB3; KIAA0194; SMF; HMG domain-containing protein 3; HMG box-containing protein 3; Protein SMF
Observed Band	
Cell Pathway	Nucleus .
Tissue Specificity	Bone marrow,Brain,Liver,Lymph,Muscle,Placenta,
Function	similarity:Contains 1 HMG box DNA-binding domain.,
Background	This gene is one of the non-canonical high mobility group (HMG) genes. The encoded protein contains an HMG-box domain found in DNA binding proteins such as transcription factors and chromosomal proteins. [provided by RefSeq, Aug 2011],
matters needing attention	Avoid repeated freezing and thawing!

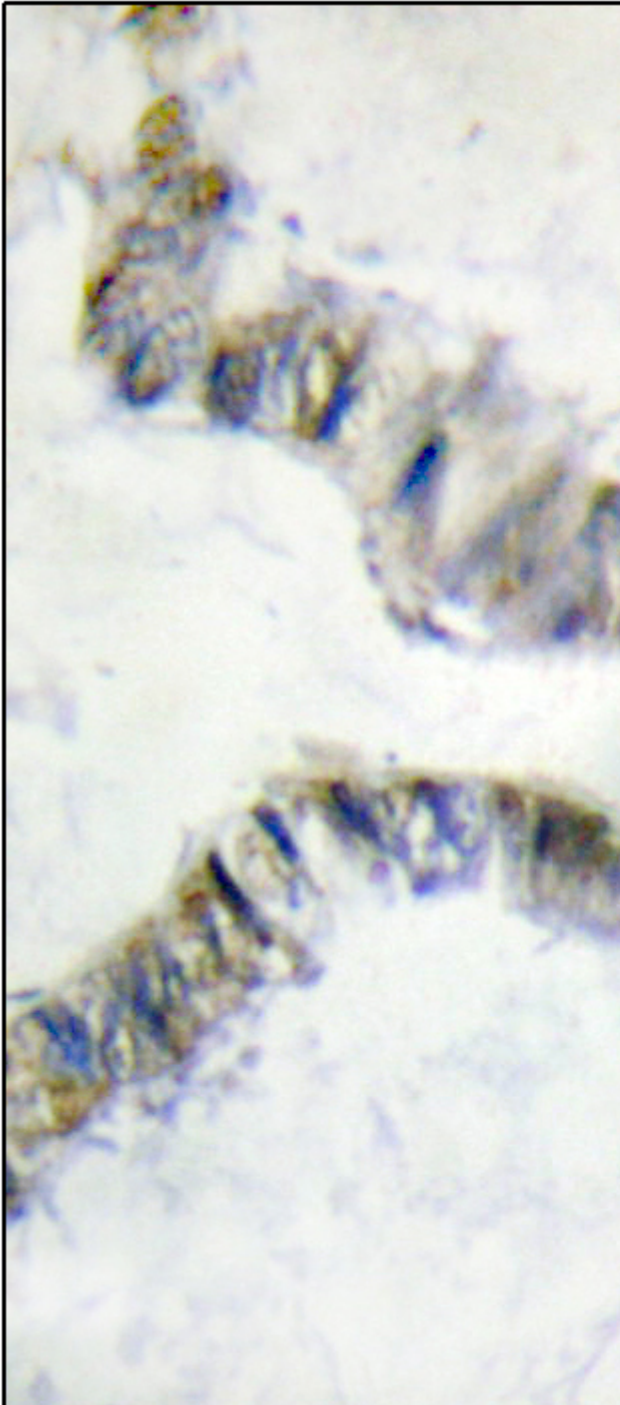
Nanjing BYabscience technology Co.,Ltd



Usage suggestions

This product can be used in immunological reaction related experiments. For more information, please consult technical personnel.

Products Images



Immunohistochemistry analysis of paraffin-embedded human colon carcinoma, using SMF Antibody. The picture on the right is blocked with the synthesized peptide.

Nanjing BYabscience technology Co.,Ltd

网址: www.njbybio.com

官方热线: 025-5229-8998

监督电话: 15950492658



Nanjing BYabscience technology Co.,Ltd

网址: www.njbybio.com

官方热线: 025-5229-8998

监督电话: 15950492658