



# Rho D Polyclonal Antibody

<b>Catalog No</b>	BYab-16240
<b>Isotype</b>	IgG
<b>Reactivity</b>	Human;Rat;Mouse;
<b>Applications</b>	WB;ELISA;IHC
<b>Gene Name</b>	RHOD
<b>Protein Name</b>	Rho-related GTP-binding protein RhoD
<b>Immunogen</b>	The antiserum was produced against synthesized peptide derived from human RHOD. AA range:113-162
<b>Specificity</b>	Rho D Polyclonal Antibody detects endogenous levels of Rho D protein.
<b>Formulation</b>	Liquid in PBS containing 50% glycerol, 0.5% BSA and 0.02% sodium azide.
<b>Source</b>	Polyclonal, Rabbit,IgG
<b>Purification</b>	The antibody was affinity-purified from rabbit antiserum by affinity-chromatography using epitope-specific immunogen.
<b>Dilution</b>	WB 1:500-2000;IHC-p 1:50-300; ELISA 2000-20000
<b>Concentration</b>	1 mg/ml
<b>Purity</b>	≥90%
<b>Storage Stability</b>	-20°C/1 year
<b>Synonyms</b>	RHOD; ARHD; Rho-related GTP-binding protein RhoD; Rho-related protein HP1; RhoHP1
<b>Observed Band</b>	25kD
<b>Cell Pathway</b>	Cell membrane ; Lipid-anchor ; Cytoplasmic side . Early endosome . Colocalizes with RAB5 to early endosomes (By similarity) . .
<b>Tissue Specificity</b>	Heart, placenta, liver, skeletal muscle, and pancreas and, with weaker intensity, in several other tissues.
<b>Function</b>	function:Involved in endosome dynamics. May coordinate membrane transport with the function of the cytoskeleton. Participates in reorganization of actin cytoskeleton.;similarity:Belongs to the small GTPase superfamily. Rho family.;subunit:In the GTP-bound form, interacts with DIAPH2 isoform 3.;tissue specificity:Heart, placenta, liver, skeletal muscle, and pancreas and, with weaker intensity, in several other tissues.;
<b>Background</b>	Ras homolog, or Rho, proteins interact with protein kinases and may serve as targets for activated GTPase. They play a critical role in muscle differentiation. The protein encoded by this gene binds GTP and is a member of the small

Nanjing BYabscience technology Co.,Ltd



GTPase superfamily. It is involved in endosome dynamics and reorganization of the actin cytoskeleton, and it may coordinate membrane transport with the function of the cytoskeleton. Two transcript variants encoding different isoforms have been found for this gene. [provided by RefSeq, Jul 2014],

**matters needing attention**

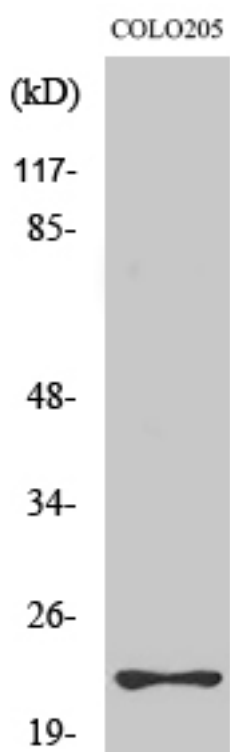
Avoid repeated freezing and thawing!

**Usage suggestions**

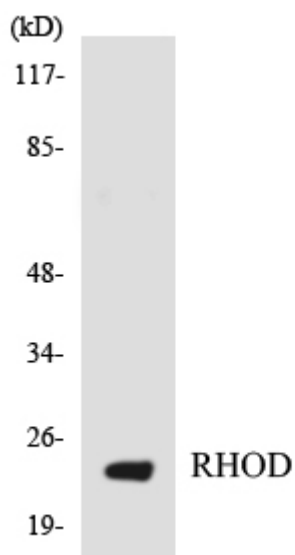
This product can be used in immunological reaction related experiments. For more information, please consult technical personnel.



## Products Images

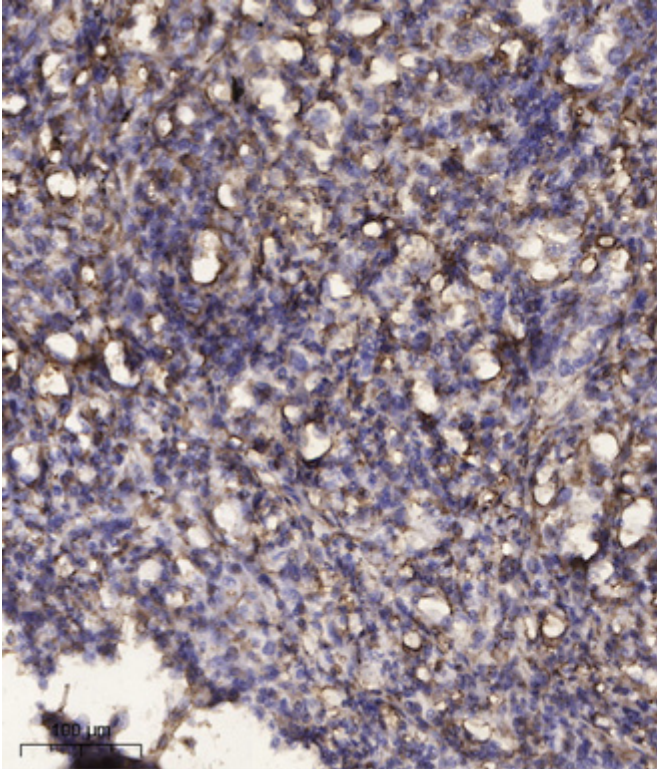


Western Blot analysis of various cells using Rho D Polyclonal Antibody diluted at 1:500



Western blot analysis of the lysates from HT-29 cells using RHOD antibody.

Nanjing BYabscience technology Co.,Ltd



Immunohistochemical analysis of paraffin-embedded human Squamous cell carcinoma of lung. 1, Antibody was diluted at 1:200(4° overnight). 2, Tris-EDTA,pH9.0 was used for antigen retrieval. 3,Secondary antibody was diluted at 1:200(room temperature, 45min).