



RASSF6 Polyclonal Antibody

Catalog No	BYab-16231
Isotype	IgG
Reactivity	Human;Rat;Mouse;
Applications	WB;ELISA
Gene Name	RASSF6
Protein Name	Ras association domain-containing protein 6
Immunogen	The antiserum was produced against synthesized peptide derived from human RASSF6. AA range:129-178
Specificity	RASSF6 Polyclonal Antibody detects endogenous levels of RASSF6 protein.
Formulation	Liquid in PBS containing 50% glycerol, 0.5% BSA and 0.02% sodium azide.
Source	Polyclonal, Rabbit,IgG
Purification	The antibody was affinity-purified from rabbit antiserum by affinity-chromatography using epitope-specific immunogen.
Dilution	Western Blot: 1/500 - 1/2000. ELISA: 1/10000. Not yet tested in other applications.
Concentration	1 mg/ml
Purity	≥90%
Storage Stability	-20°C/1 year
Synonyms	RASSF6; Ras association domain-containing protein 6
Observed Band	45kD
Cell Pathway	
Tissue Specificity	Highest expression in thymus, kidney and placenta. Also detected in colon, small intestine and lung. Tends to be down-regulated in 30-60% of tumors derived from breast, colon, kidney liver, rectum, pancreas, stomach and the thyroid gland compared to the normal counterpart.
Function	function:May act as a Ras effector protein.,sequence caution:Translated as Gln.,similarity:Contains 1 Ras-associating domain.,similarity:Contains 1 SARAH domain.,
Background	This gene encodes a member of the Ras-association domain family (RASSF). Members of this family form the core of a highly conserved tumor suppressor network, the Salvador-Warts-Hippo (SWH) pathway. The protein encoded by this gene is a Ras effector protein that induces apoptosis. A genomic region containing this gene has been linked to susceptibility to viral bronchiolitis.

Nanjing BYabscience technology Co.,Ltd



Alternative splicing results in multiple transcript variants and protein isoforms. [provided by RefSeq, Jul 2012],

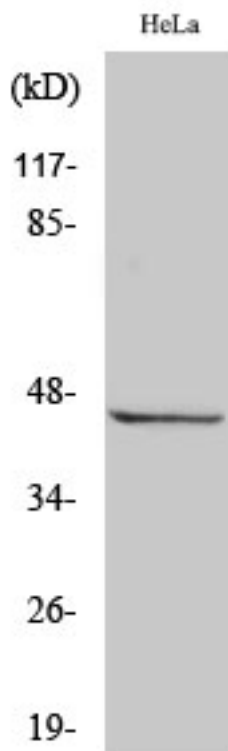
matters needing attention

Avoid repeated freezing and thawing!

Usage suggestions

This product can be used in immunological reaction related experiments. For more information, please consult technical personnel.

Products Images

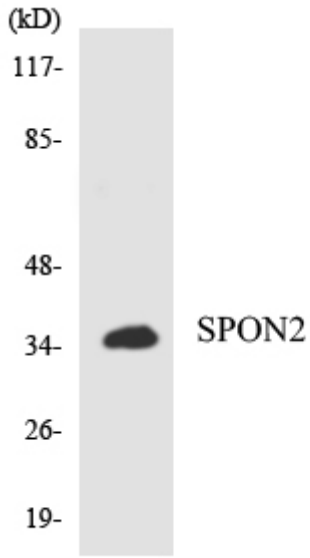


Western Blot analysis of various cells using RASSF6 Polyclonal Antibody



Western blot analysis of lysates from HeLa cells, using RASSF6 Antibody. The lane on the right is blocked with the synthesized peptide.

RASSF6-



Western blot analysis of the lysates from K562 cells using RASSF6 antibody.