



RASL10B Polyclonal Antibody

Catalog No	BYab-16228
Isotype	IgG
Reactivity	Human;Mouse
Applications	WB;IHC
Gene Name	RASL10B
Protein Name	Ras-like protein family member 10B
Immunogen	Synthesized peptide derived from RASL10B . at AA range: 80-160
Specificity	RASL10B Polyclonal Antibody detects endogenous levels of RASL10B protein.
Formulation	Liquid in PBS containing 50% glycerol, 0.5% BSA and 0.02% sodium azide.
Source	Polyclonal, Rabbit,IgG
Purification	The antibody was affinity-purified from rabbit antiserum by affinity-chromatography using epitope-specific immunogen.
Dilution	WB 1:500-2000;IHC-p 1:50-300
Concentration	1 mg/ml
Purity	≥90%
Storage Stability	-20°C/1 year
Synonyms	RASL10B; Ras-like protein family member 10B; Ras-like protein VTS58635; Ras-related protein 17; RRP17
Observed Band	22kD
Cell Pathway	Cell membrane ; Lipid-anchor ; Cytoplasmic side .
Tissue Specificity	Expressed at high levels in skeletal muscle and, at much lower levels, in heart, brain and pancreas.
Function	similarity:Belongs to the small GTPase superfamily. Ras family.,
Background	similarity:Belongs to the small GTPase superfamily. Ras family.,
matters needing attention	Avoid repeated freezing and thawing!
Usage suggestions	This product can be used in immunological reaction related experiments. For more information, please consult technical personnel.

Nanjing BYabscience technology Co.,Ltd



Products Images



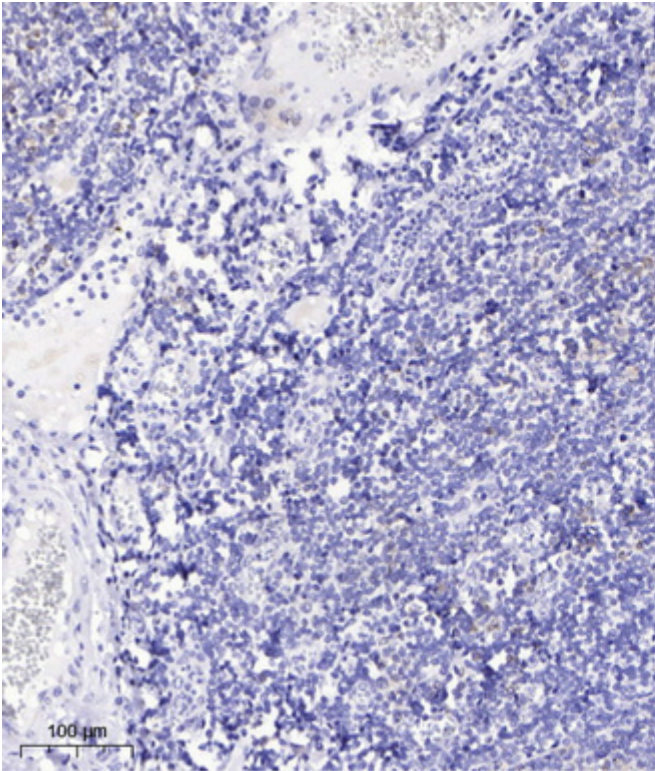
Western blot analysis of RASL10B Antibody. The lane on the right is blocked with the RASL10B peptide.

RASL10B

nce technology Co.,Ltd

025-5229-8998

监督电话: 15950492658



Immunohistochemical analysis of paraffin-embedded human tonsil. 1, Antibody was diluted at 1:200(4° overnight). 2, Tris-EDTA,pH9.0 was used for antigen retrieval. 3,Secondary antibody was diluted at 1:200(room temperature, 45min).