



Rag C Polyclonal Antibody

Catalog No	BYab-16220
Isotype	IgG
Reactivity	Human;Mouse;Rat
Applications	WB;ELISA;IHC CoIP
Gene Name	RRAGC
Protein Name	Ras-related GTP-binding protein C
Immunogen	The antiserum was produced against synthesized peptide derived from human RRAGC. AA range:302-351
Specificity	Rag C Polyclonal Antibody detects endogenous levels of Rag C protein.
Formulation	Liquid in PBS containing 50% glycerol, 0.5% BSA and 0.02% sodium azide.
Source	Polyclonal, Rabbit,IgG
Purification	The antibody was affinity-purified from rabbit antiserum by affinity-chromatography using epitope-specific immunogen.
Dilution	WB 1:500-2000;IHC-p 1:50-300; IP 1:50-200 ELISA 2000-20000
Concentration	1 mg/ml
Purity	≥90%
Storage Stability	-20°C/1 year
Synonyms	RRAGC; Ras-related GTP-binding protein C; Rag C; RagC; GTPase-interacting protein 2; TIB929
Observed Band	44kD
Cell Pathway	Cytoplasm . Nucleus . Lysosome . Predominantly cytoplasmic. May shuttle between the cytoplasm and nucleus, depending on the bound nucleotide state of associated RRAGA (PubMed:11073942). .
Tissue Specificity	Lymph,Ovary,
Function	function:Has guanine nucleotide-binding activity but weak intrinsic GTPase activity.,similarity:Belongs to the GTR/RAG GTP-binding protein family.,subcellular location:Predominantly cytoplasmic. May shuttle between the cytoplasm and nucleus, depending on the bound nucleotide state of associated RRAGA.,subunit:Forms a heterodimer with RRAGA in a sequence-independent manner. Binds GTP. Interacts with NOL8 and RRAGB.,
Background	This gene encodes a member of the GTR/RAG GTP-binding protein family. The encoded protein is a monomeric guanine nucleotide-binding protein which forms a

Nanjing BYabscience technology Co.,Ltd



heterodimer with RRAGA and RRAGB and is primarily localized to the cytoplasm. The encoded protein promotes intracellular localization of the mTOR complex. Alternative splicing results in multiple transcript variants. [provided by RefSeq, Dec 2012],

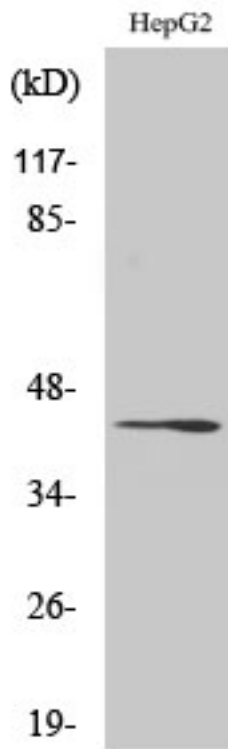
matters needing attention

Avoid repeated freezing and thawing!

Usage suggestions

This product can be used in immunological reaction related experiments. For more information, please consult technical personnel.

Products Images

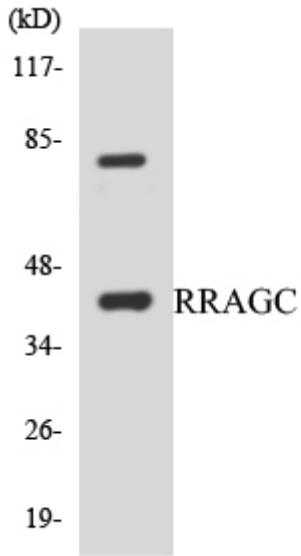


Western Blot analysis of various cells using Rag C Polyclonal Antibody

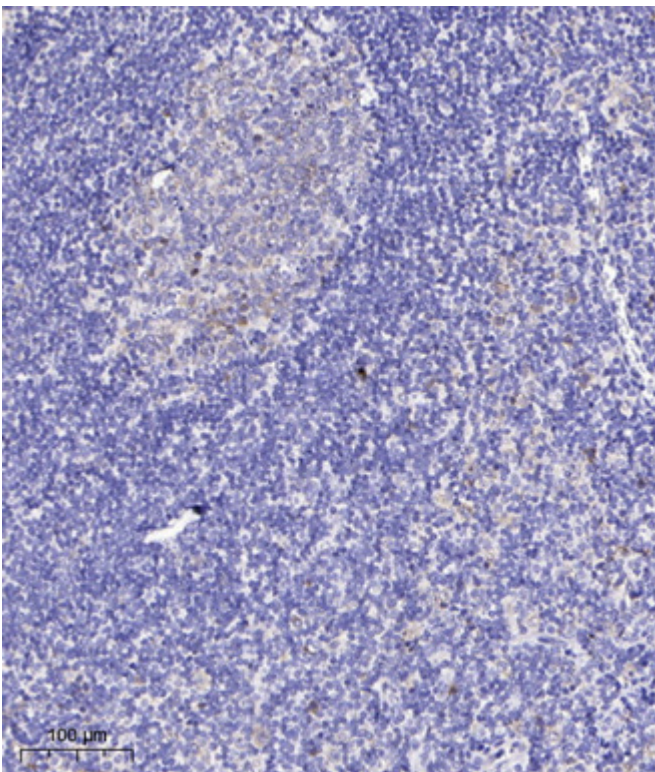


L Western blot analysis of lysates from HepG2, A549, and LOVO cells, using RRAGC Antibody. The lane on the right is blocked with the synthesized peptide.

RRAGC--



Western blot analysis of the lysates from HepG2 cells using RRAGC antibody.



Immunohistochemical analysis of paraffin-embedded human tonsil. 1, Antibody was diluted at 1:200(4° overnight). 2, Tris-EDTA,pH9.0 was used for antigen retrieval. 3,Secondary antibody was diluted at 1:200(room temperature, 45min).