



Rab11-FIP3 Polyclonal Antibody

Catalog No	BYab-16212
Isotype	IgG
Reactivity	Human;Mouse;Rat
Applications	IHC;IF;ELISA
Gene Name	RAB11FIP3
Protein Name	Rab11 family-interacting protein 3
Immunogen	The antiserum was produced against synthesized peptide derived from human RAB11FIP3. AA range:569-618
Specificity	Rab11-FIP3 Polyclonal Antibody detects endogenous levels of Rab11-FIP3 protein.
Formulation	Liquid in PBS containing 50% glycerol, 0.5% BSA and 0.02% sodium azide.
Source	Polyclonal, Rabbit,IgG
Purification	The antibody was affinity-purified from rabbit antiserum by affinity-chromatography using epitope-specific immunogen.
Dilution	IHC: 1/100 - 1/300. ELISA: 1/10000.. IF 1:50-200
Concentration	1 mg/ml
Purity	≥90%
Storage Stability	-20°C/1 year
Synonyms	RAB11FIP3; ARFO1; KIAA0665; Rab11 family-interacting protein 3; FIP3-Rab11; Rab11-FIP3; Arfophilin-1; EF hands-containing Rab-interacting protein; Eferin; MU-MB-17.148
Observed Band	
Cell Pathway	Recycling endosome membrane ; Peripheral membrane protein. Cytoplasm, cytoskeleton, microtubule organizing center, centrosome . Cleavage furrow . Midbody . In early mitosis remains diffuse and distributed through the cell. The onset of anaphase sequesters these vesicles to the centrosomes at the opposite poles of the cell. During telophase these vesicles move from the centrosomes, to the furrow, and then to the midbody to aid in abscission (PubMed:15158446, PubMed:15601896, PubMed:18511905). Interaction with Rab11 mediates localization to endosomes (PubMed:11495908). Interaction with ARF6 mediates localization to the midbody (PubMed:16148947). .
Tissue Specificity	Brain,Ovary,
Function	similarity:Contains 2 EF-hand domains.,subcellular location:Colocalizes with

Nanjing BYabscience technology Co.,Ltd



RAB11A at recycling endosomes.,subunit:Forms an heterooligomeric complex with RAB11FIP4. Binds to RAB11A, RAB11B and RAB25.,

Background

Proteins of the large Rab GTPase family (see RAB1A; MIM 179508) have regulatory roles in the formation, targeting, and fusion of intracellular transport vesicles. RAB11FIP3 is one of many proteins that interact with and regulate Rab GTPases (Hales et al., 2001 [PubMed 11495908]).[supplied by OMIM, Mar 2008],

matters needing attention

Avoid repeated freezing and thawing!

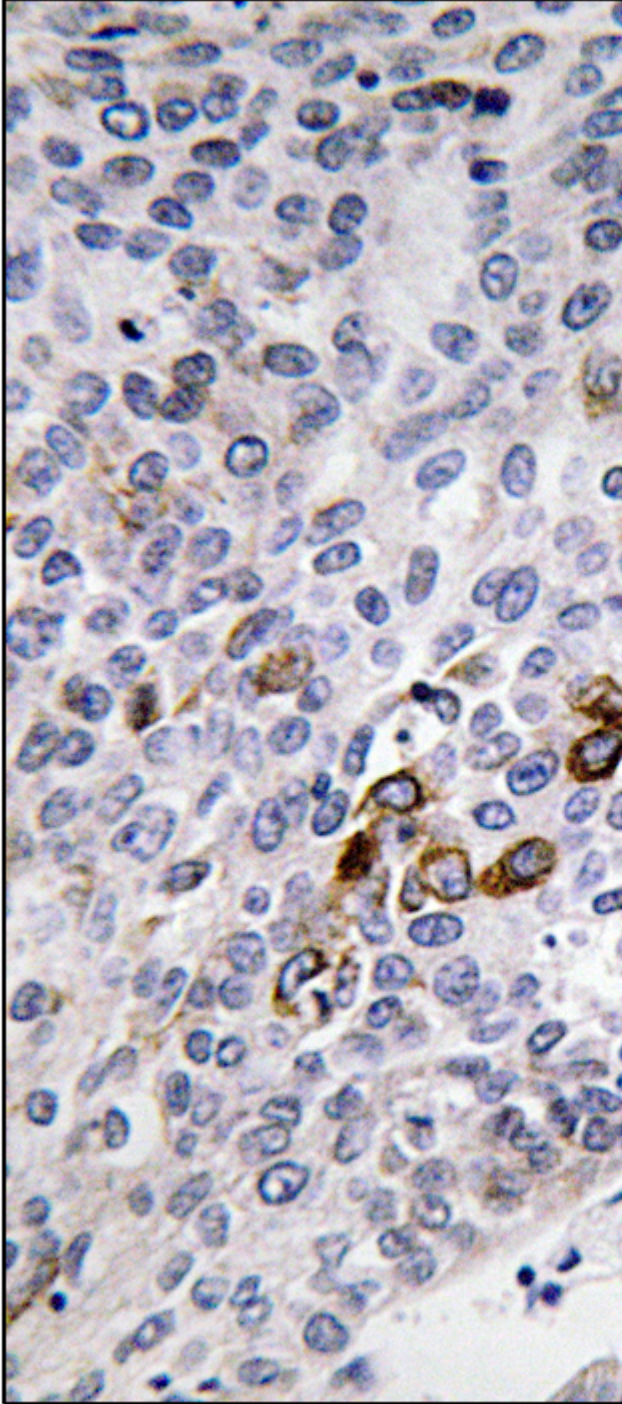
Usage suggestions

This product can be used in immunological reaction related experiments. For more information, please consult technical personnel.

Nanjing BYabscience technology Co.,Ltd



Products Images



Immunohistochemistry analysis of paraffin-embedded human lung carcinoma tissue, using RAB11FIP3 Antibody. The picture on the right is blocked with the synthesized peptide.

Nanjing BYabscience technology Co.,Ltd

网址: www.njbybio.com

官方热线: 025-5229-8998

监督电话: 15950492658



Nanjing BYabscience technology Co.,Ltd

网址: www.njbybio.com

官方热线: 025-5229-8998

监督电话: 15950492658