



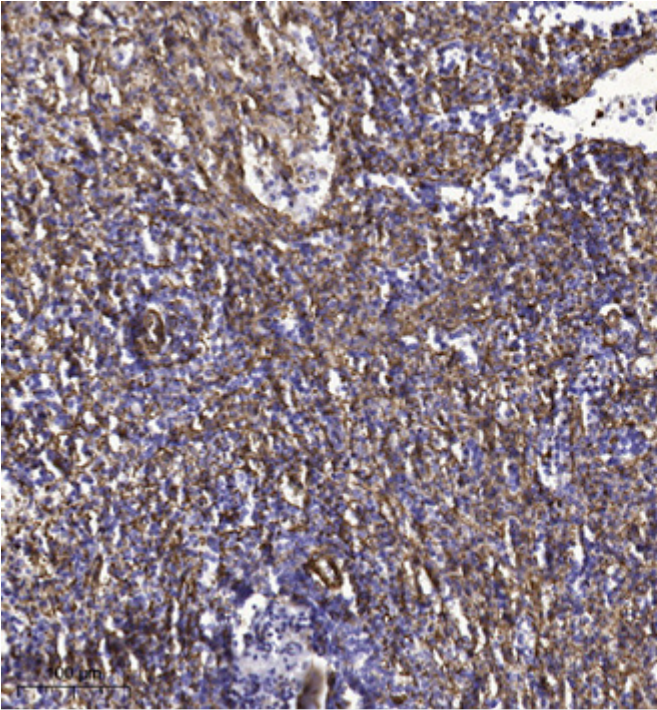
Rab L5 Polyclonal Antibody

Catalog No	BYab-16209
Isotype	IgG
Reactivity	Human;Rat;Mouse;
Applications	IHC;IF;ELISA
Gene Name	RABL5
Protein Name	Rab-like protein 5
Immunogen	The antiserum was produced against synthesized peptide derived from human RABL5. AA range:128-177
Specificity	Rab L5 Polyclonal Antibody detects endogenous levels of Rab L5 protein.
Formulation	Liquid in PBS containing 50% glycerol, 0.5% BSA and 0.02% sodium azide.
Source	Polyclonal, Rabbit,IgG
Purification	The antibody was affinity-purified from rabbit antiserum by affinity-chromatography using epitope-specific immunogen.
Dilution	IHC: 1/100 - 1/300. ELISA: 1/5000.. IF 1:50-200
Concentration	1 mg/ml
Purity	≥90%
Storage Stability	-20°C/1 year
Synonyms	RABL5; Rab-like protein 5
Observed Band	
Cell Pathway	Cell projection, cilium .
Tissue Specificity	Amygdala,Brain,Lung,Mammary gland,Ovary,
Function	similarity:Belongs to the small GTPase superfamily. Rab family.,
Background	similarity:Belongs to the small GTPase superfamily. Rab family.,
matters needing attention	Avoid repeated freezing and thawing!
Usage suggestions	This product can be used in immunological reaction related experiments. For more information, please consult technical personnel.

Nanjing BYabscience technology Co.,Ltd



Products Images



Immunohistochemical analysis of paraffin-embedded human spleen tissue. 1,primary Antibody was diluted at 1:200(4° overnight). 2, Sodium citrate pH 6.0 was used for antigen retrieval(>98°C,20min). 3,Secondary antibody was diluted at 1:200