



# Rab L2A Polyclonal Antibody

<b>Catalog No</b>	BYab-16208
<b>Isotype</b>	IgG
<b>Reactivity</b>	Human;Rat;Mouse;
<b>Applications</b>	WB;IHC;IF;ELISA
<b>Gene Name</b>	RABL2A
<b>Protein Name</b>	Rab-like protein 2A
<b>Immunogen</b>	The antiserum was produced against synthesized peptide derived from human RABL2A. AA range:179-228
<b>Specificity</b>	Rab L2A Polyclonal Antibody detects endogenous levels of Rab L2A protein.
<b>Formulation</b>	Liquid in PBS containing 50% glycerol, 0.5% BSA and 0.02% sodium azide.
<b>Source</b>	Polyclonal, Rabbit,IgG
<b>Purification</b>	The antibody was affinity-purified from rabbit antiserum by affinity-chromatography using epitope-specific immunogen.
<b>Dilution</b>	WB: 1/500 - 1/2000. IHC: 1/100 - 1/300. ELISA: 1/20000.. IF 1:50-200
<b>Concentration</b>	1 mg/ml
<b>Purity</b>	≥90%
<b>Storage Stability</b>	-20°C/1 year
<b>Synonyms</b>	RABL2A; Rab-like protein 2A
<b>Observed Band</b>	30-34kD
<b>Cell Pathway</b>	intracellular,
<b>Tissue Specificity</b>	Expressed in the testis.
<b>Function</b>	similarity:Belongs to the small GTPase superfamily. Rab family.,
<b>Background</b>	This gene is a member of the RAB gene family which belongs to the RAS GTPase superfamily. The proteins in the family of RAS-related signaling molecules are small GTP-binding proteins that play important roles in the regulation of exocytotic and endocytotic pathways. This gene maps to the site of an ancestral telomere fusion event and may be a subtelomeric gene. Alternative splicing results in multiple transcript variants encoding different isoforms. [provided by RefSeq, Apr 2015],

Nanjing BYabscience technology Co.,Ltd



**matters needing attention**

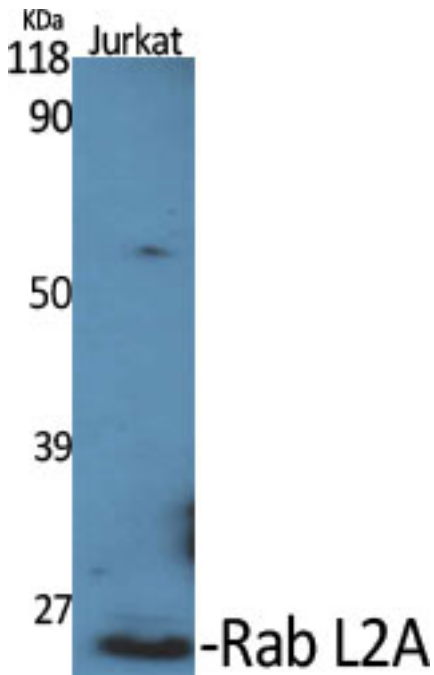
Avoid repeated freezing and thawing!

**Usage suggestions**

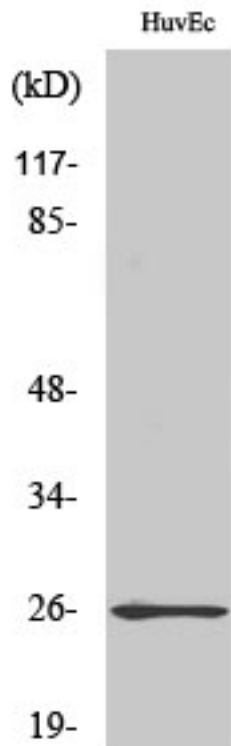
This product can be used in immunological reaction related experiments. For more information, please consult technical personnel.



## Products Images

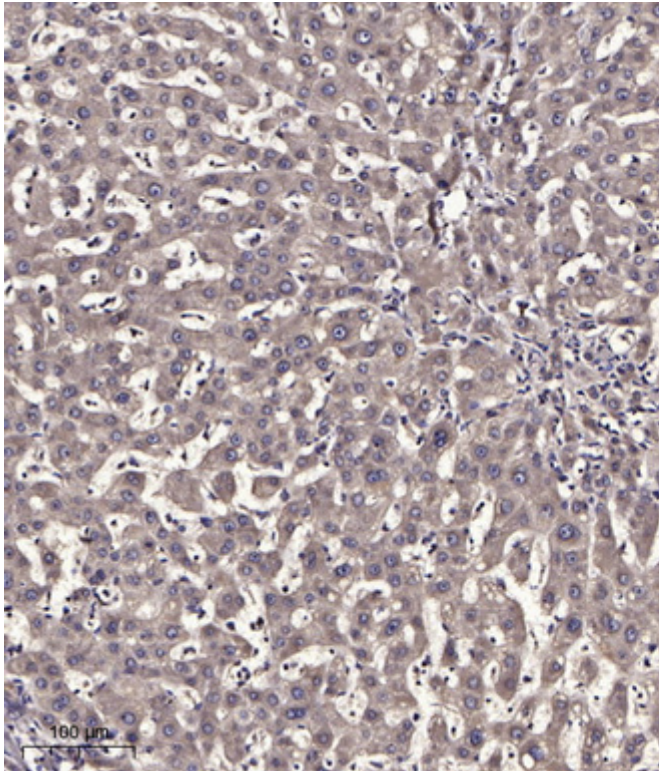


Western Blot analysis of various cells using Rab L2A Polyclonal Antibody diluted at 1:500



Western Blot analysis of COLO205 cells using Rab L2A Polyclonal Antibody diluted at 1:500

Nanjing BYabscience technology Co.,Ltd



Immunohistochemical analysis of paraffin-embedded human liver cancer. 1, Antibody was diluted at 1:200(4° overnight). 2, Tris-EDTA,pH9.0 was used for antigen retrieval. 3,Secondary antibody was diluted at 1:200(room temperature, 45min).