



Rab 7L1 Polyclonal Antibody

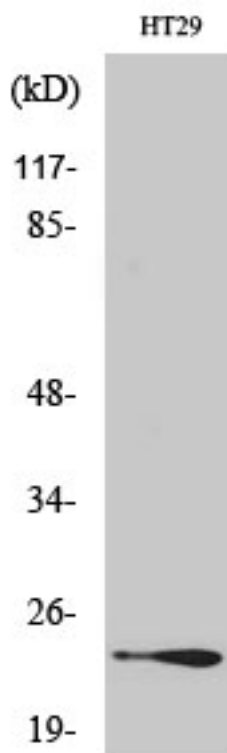
Catalog No	BYab-16207
Isotype	IgG
Reactivity	Human;Mouse;Rat
Applications	WB;ELISA;IHC
Gene Name	RAB7L1
Protein Name	Ras-related protein Rab-7L1
Immunogen	The antiserum was produced against synthesized peptide derived from human RAB7L1. AA range:115-164
Specificity	Rab 7L1 Polyclonal Antibody detects endogenous levels of Rab 7L1 protein.
Formulation	Liquid in PBS containing 50% glycerol, 0.5% BSA and 0.02% sodium azide.
Source	Polyclonal, Rabbit,IgG
Purification	The antibody was affinity-purified from rabbit antiserum by affinity-chromatography using epitope-specific immunogen.
Dilution	WB 1:500-2000;IHC-p 1:50-300; ELISA 2000-20000
Concentration	1 mg/ml
Purity	≥90%
Storage Stability	-20°C/1 year
Synonyms	RAB7L1; Ras-related protein Rab-7L1; Rab-7-like protein 1
Observed Band	28kD
Cell Pathway	Cell membrane ; Lipid-anchor ; Cytoplasmic side . Cytoplasm . Cytoplasm, perinuclear region . Golgi apparatus . Golgi apparatus, trans-Golgi network . Vacuole . Cytoplasm, cytoskeleton . Colocalizes with LRRK2 along tubular structures emerging from Golgi apparatus (PubMed:29212815). Colocalizes with GM130 at the Golgi apparatus (PubMed:22042847). Colocalizes with dynamic tubules emerging from and retracting to the Golgi apparatus (PubMed:22042847). Colocalizes with TGN46 at the trans-Golgi network (TGN) (PubMed:24788816). In Salmonella enterica serovar Typhi (S.Typhi) infected epithelial cells, is recruited and colocalized with both S.Typhi-containing vacuoles and dynamic tubules as well as those emerging from the vacuole toward the cell periphery (PubMed:22042847). .
Tissue Specificity	Ubiquitous.
Function	similarity:Belongs to the small GTPase superfamily. Rab family.,tissue specificity:Ubiquitous.,

Nanjing BYabscience technology Co.,Ltd



Background	similarity:Belongs to the small GTPase superfamily. Rab family.,tissue specificity:Ubiquitous.,
matters needing attention	Avoid repeated freezing and thawing!
Usage suggestions	This product can be used in immunological reaction related experiments. For more information, please consult technical personnel.

Products Images



Western Blot analysis of various cells using Rab 7L1 Polyclonal Antibody

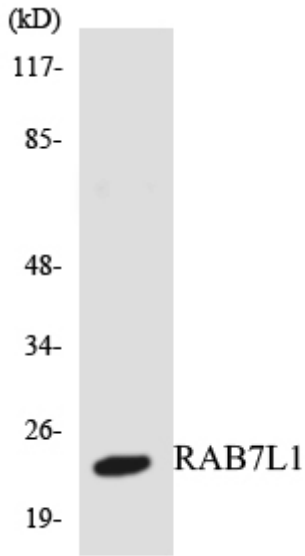


HT29 |

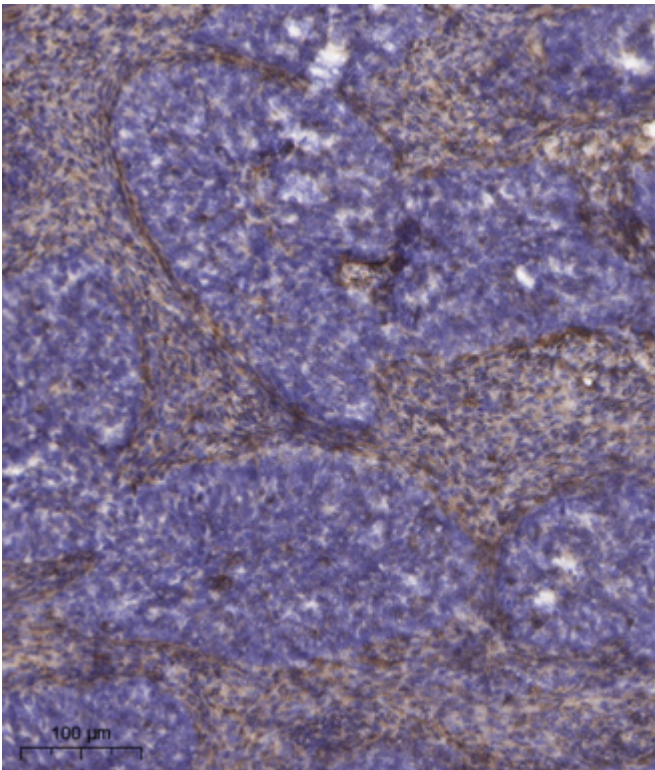
Western blot analysis of lysates from HT-29 cells, using RAB7L1 Antibody. The lane on the right is blocked with the synthesized peptide.



RAB7L1--



Western blot analysis of the lysates from HepG2 cells using RAB7L1 antibody.



Immunohistochemical analysis of paraffin-embedded human cervical carcinoma. 1, Antibody was diluted at 1:200(4° overnight). 2, Tris-EDTA, pH9.0 was used for antigen retrieval. 3, Secondary antibody was diluted at 1:200(room temperature, 45min).