



# Rab 34 Polyclonal Antibody

<b>Catalog No</b>	BYab-16198
<b>Isotype</b>	IgG
<b>Reactivity</b>	Human;Rat;Mouse;
<b>Applications</b>	WB;IHC;IF;ELISA
<b>Gene Name</b>	RAB34
<b>Protein Name</b>	Ras-related protein Rab-34
<b>Immunogen</b>	The antiserum was produced against synthesized peptide derived from human RAB34. AA range:206-255
<b>Specificity</b>	Rab 34 Polyclonal Antibody detects endogenous levels of Rab 34 protein.
<b>Formulation</b>	Liquid in PBS containing 50% glycerol, 0.5% BSA and 0.02% sodium azide.
<b>Source</b>	Polyclonal, Rabbit,IgG
<b>Purification</b>	The antibody was affinity-purified from rabbit antiserum by affinity-chromatography using epitope-specific immunogen.
<b>Dilution</b>	WB: 1/500 - 1/2000.IHC-p 1:50-200 ELISA: 1/5000.. IF 1:50-200
<b>Concentration</b>	1 mg/ml
<b>Purity</b>	≥90%
<b>Storage Stability</b>	-20°C/1 year
<b>Synonyms</b>	RAB34; RAB39; RAH; Ras-related protein Rab-34; Ras-related protein Rab-39; Ras-related protein Rah
<b>Observed Band</b>	29kD
<b>Cell Pathway</b>	Cytoplasm . Golgi apparatus . Cytoplasmic vesicle, phagosome . Cytoplasmic vesicle, phagosome membrane ; Lipid-anchor ; Cytoplasmic side . Cell projection, cilium . Recruited to phagosomes containing S.aureus or M.tuberculosis (PubMed:21255211). .
<b>Tissue Specificity</b>	Brain,Embryo,Heart,Mammary gland,Pancreas,Skeletal muscle,
<b>Function</b>	function:Protein transport. Involved in the redistribution of lysosomes to the peri-Golgi region.,similarity:Belongs to the small GTPase superfamily. Rab family.,subcellular location:Associates with the Golgi complex.,subunit:Interacts with RILP.,
<b>Background</b>	This gene encodes a protein belonging to the RAB family of proteins, which are small GTPases involved in protein transport. This family member is a Golgi-bound member of the secretory pathway that is involved in the repositioning of

Nanjing BYabscience technology Co.,Ltd



lysosomes and the activation of macropinocytosis. Alternative splicing of this gene results in multiple transcript variants. This gene overlaps and shares exon structure with the nine-amino acid residue-repeats (NARR) gene, which encodes a functionally distinct nucleolar protein from a different reading frame. [provided by RefSeq, Jan 2012],

**matters needing attention**

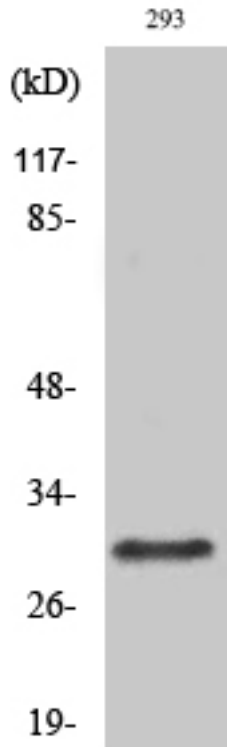
Avoid repeated freezing and thawing!

**Usage suggestions**

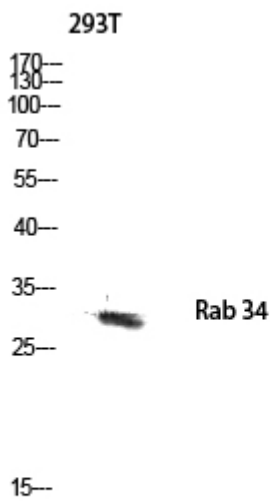
This product can be used in immunological reaction related experiments. For more information, please consult technical personnel.



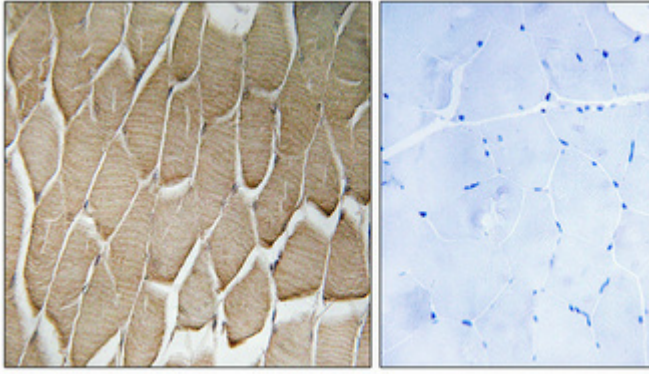
## Products Images



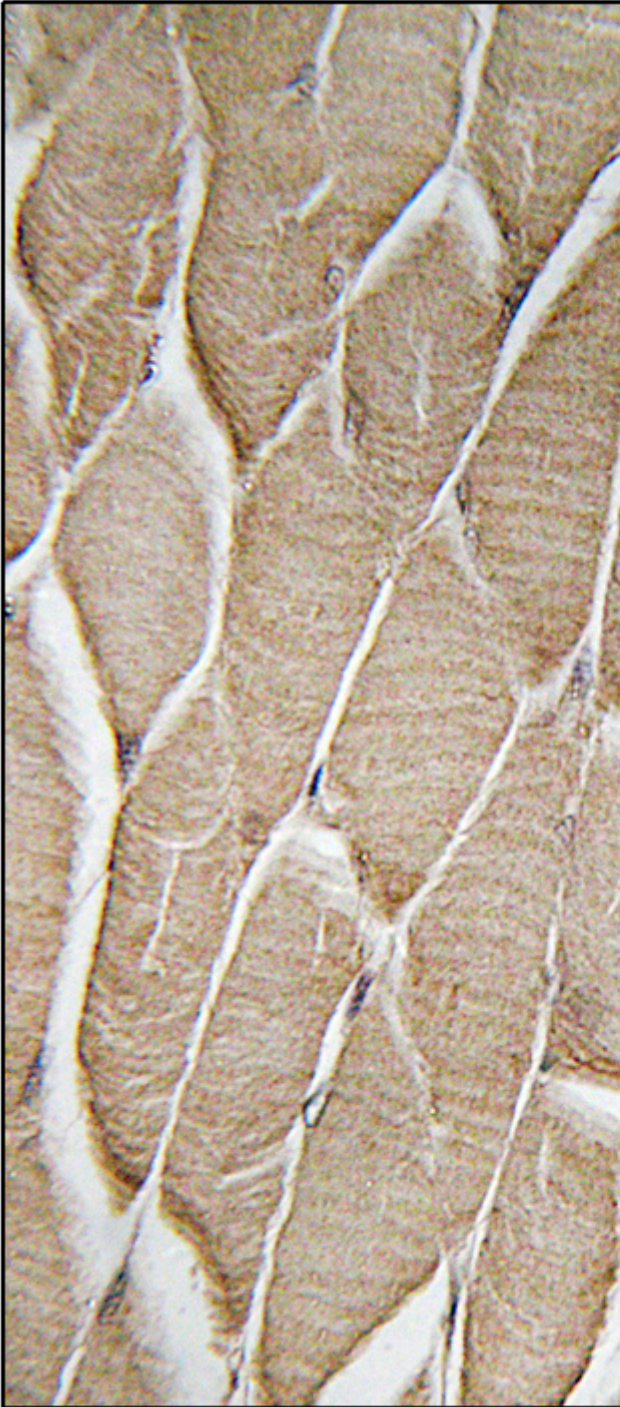
Western Blot analysis of various cells using Rab 34 Polyclonal Antibody diluted at 1:500



Western blot analysis of 293T lysis using Rab 34 antibody. Antibody was diluted at 1:500



Immunohistochemical analysis of paraffin-embedded Human skeletal muscle. Antibody was diluted at 1:100(4° overnight). High-pressure and temperature Tris-EDTA,pH8.0 was used for antigen retrieval. Negative contrl (right) obtained from antibody was pre-absorbed by immunogen peptide.



Immunohistochemistry analysis of paraffin-embedded human skeletal muscle, using RAB34 Antibody. The picture on the right is blocked with the synthesized peptide.