



# Rab 31 Polyclonal Antibody

<b>Catalog No</b>	BYab-16196
<b>Isotype</b>	IgG
<b>Reactivity</b>	Human;Mouse;Rat
<b>Applications</b>	WB; ELISA;IHC
<b>Gene Name</b>	RAB31
<b>Protein Name</b>	Ras-related protein Rab-31
<b>Immunogen</b>	Synthesized peptide derived from Rab 31 . at AA range: 50-130
<b>Specificity</b>	Rab 31 Polyclonal Antibody detects endogenous levels of Rab 31 protein.
<b>Formulation</b>	Liquid in PBS containing 50% glycerol, 0.5% BSA and 0.02% sodium azide.
<b>Source</b>	Polyclonal, Rabbit,IgG
<b>Purification</b>	The antibody was affinity-purified from rabbit antiserum by affinity-chromatography using epitope-specific immunogen.
<b>Dilution</b>	WB 1:500-2000;IHC-p 1:50-300; ELISA 2000-20000
<b>Concentration</b>	1 mg/ml
<b>Purity</b>	≥90%
<b>Storage Stability</b>	-20°C/1 year
<b>Synonyms</b>	RAB31; RAB22B; Ras-related protein Rab-31; Ras-related protein Rab-22B
<b>Observed Band</b>	21kD
<b>Cell Pathway</b>	Golgi apparatus, trans-Golgi network . Golgi apparatus, trans-Golgi network membrane ; Lipid-anchor ; Cytoplasmic side . Early endosome . Cytoplasmic vesicle, phagosome . Cytoplasmic vesicle, phagosome membrane ; Lipid-anchor ; Cytoplasmic side . Rapidly recruited to phagosomes containing S.aureus or M.tuberculosis (PubMed:21255211). .
<b>Tissue Specificity</b>	Highest expression in placenta and brain with lower levels in heart and lung. Not detected in liver, skeletal muscle, kidney or pancreas.
<b>Function</b>	similarity:Belongs to the small GTPase superfamily. Rab family.,tissue specificity:Highest expression in placenta and brain with lower levels in heart and lung. Not detected in liver, skeletal muscle, kidney or pancreas.,
<b>Background</b>	Small GTP-binding proteins of the RAB family, such as RAB31, play essential roles in vesicle and granule targeting (Bao et al., 2002 [PubMed 11784320]).[supplied by OMIM, Jul 2009],

**Nanjing BYabscience technology Co.,Ltd**



**matters needing attention**

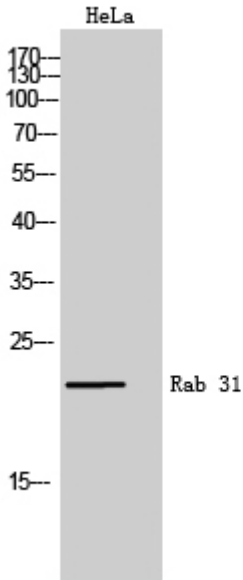
Avoid repeated freezing and thawing!

**Usage suggestions**

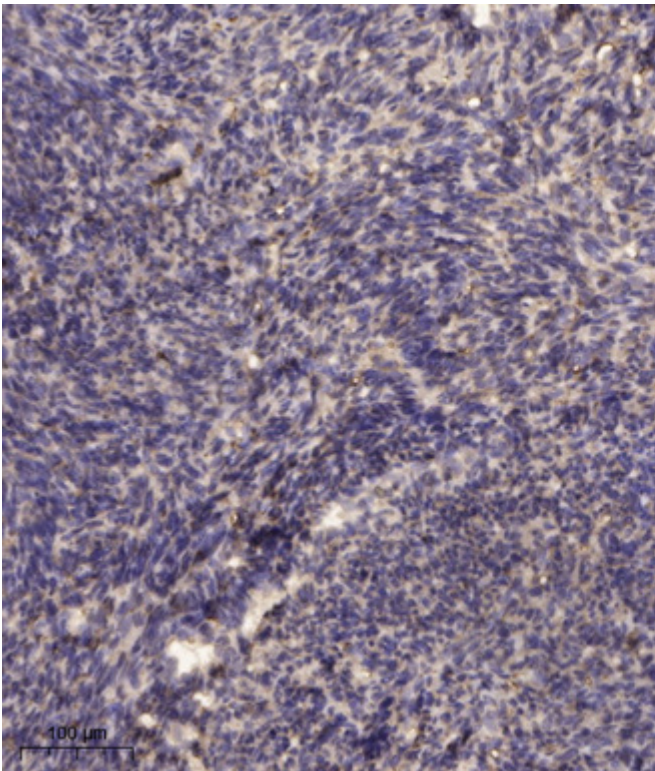
This product can be used in immunological reaction related experiments. For more information, please consult technical personnel.



## Products Images



Western Blot analysis of HeLa cells using Rab 31 Polyclonal Antibody



Immunohistochemical analysis of paraffin-embedded human uterus. 1, Antibody was diluted at 1:200(4° overnight). 2, Tris-EDTA, pH9.0 was used for antigen retrieval. 3, Secondary antibody was diluted at 1:200(room temperature, 45min).