



Rab 2A Polyclonal Antibody

Catalog No	BYab-16192
Isotype	IgG
Reactivity	Human;Mouse;Rat
Applications	WB;IHC;IF;ELISA
Gene Name	RAB2A
Protein Name	Ras-related protein Rab-2A
Immunogen	The antiserum was produced against synthesized peptide derived from human RAB2A. AA range:84-133
Specificity	Rab 2A Polyclonal Antibody detects endogenous levels of Rab 2A protein.
Formulation	Liquid in PBS containing 50% glycerol, 0.5% BSA and 0.02% sodium azide.
Source	Polyclonal, Rabbit,IgG
Purification	The antibody was affinity-purified from rabbit antiserum by affinity-chromatography using epitope-specific immunogen.
Dilution	WB: 1/500 - 1/2000. IHC: 1/100 - 1/300. ELISA: 1/20000.. IF 1:50-200
Concentration	1 mg/ml
Purity	≥90%
Storage Stability	-20°C/1 year
Synonyms	RAB2A; RAB2; Ras-related protein Rab-2A
Observed Band	25kD
Cell Pathway	Endoplasmic reticulum-Golgi intermediate compartment membrane ; Lipid-anchor . Melanosome . Endoplasmic reticulum membrane ; Lipid-anchor . Golgi apparatus membrane ; Lipid-anchor . Cytoplasmic vesicle, secretory vesicle, acrosome . Localized in the Golgi apparatus in the round spermatids and in the acrosome in the elongating spermatid (By similarity). Identified by mass spectrometry in melanosome fractions from stage I to stage IV (PubMed:17081065). .
Tissue Specificity	Brain, Skin,
Function	function:Required for protein transport from the endoplasmic reticulum to the Golgi complex.,similarity:Belongs to the small GTPase superfamily. Rab family.,subcellular location:Identified by mass spectrometry in melanosome fractions from stage I to stage IV.,subunit:Interacts with PRKCI.,

Nanjing BYabscience technology Co.,Ltd



Background

The protein encoded by this gene belongs to the Rab family, members of which are small molecular weight guanosine triphosphatases (GTPases) that contain highly conserved domains involved in GTP binding and hydrolysis. The Rabs are membrane-bound proteins, involved in vesicular fusion and trafficking. This protein is a resident of pre-Golgi intermediates, and is required for protein transport from the endoplasmic reticulum (ER) to the Golgi complex. Alternatively spliced transcript variants encoding different isoforms have been found for this gene. [provided by RefSeq, Oct 2011],

matters needing attention

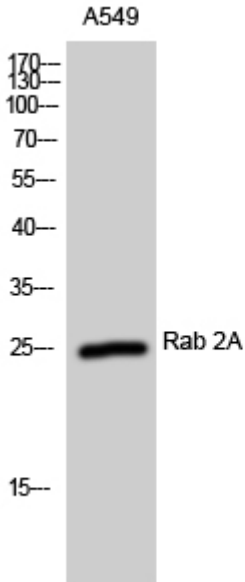
Avoid repeated freezing and thawing!

Usage suggestions

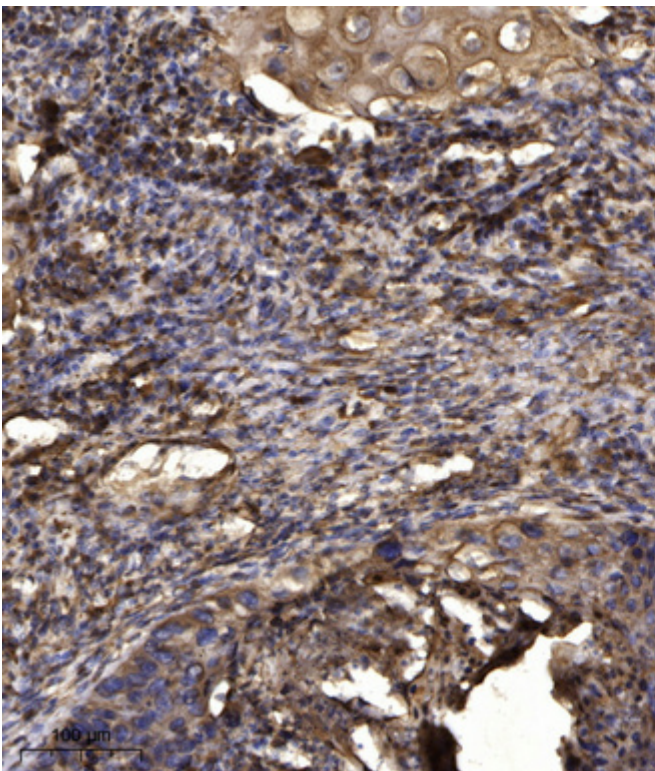
This product can be used in immunological reaction related experiments. For more information, please consult technical personnel.



Products Images



Western Blot analysis of A549 cells using Rab 2A Polyclonal Antibody



Immunohistochemical analysis of paraffin-embedded human Squamous cell carcinoma of lung. 1, Antibody was diluted at 1:200(4° overnight). 2, Tris-EDTA,pH9.0 was used for antigen retrieval. 3,Secondary antibody was diluted at 1:200(room temperature, 45min).