



Rab 24 Polyclonal Antibody

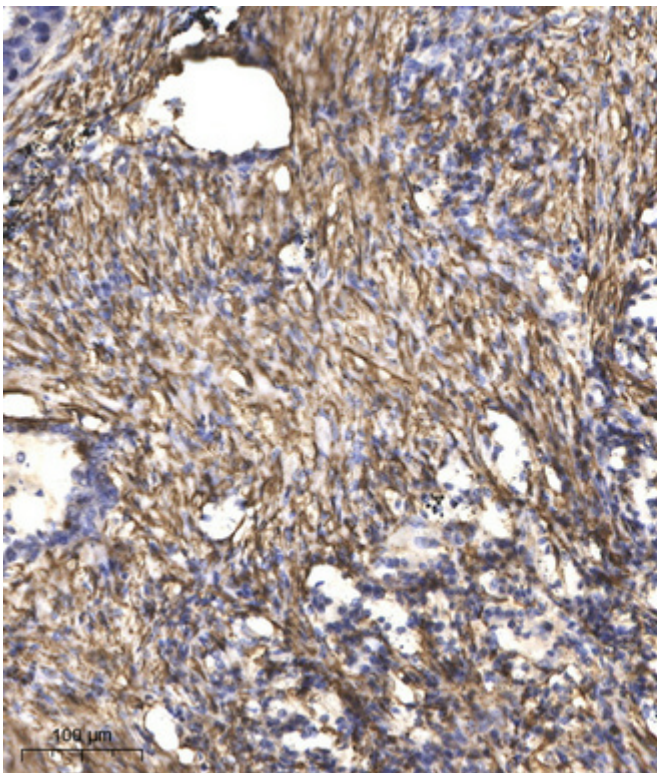
Catalog No	BYab-16191
Isotype	IgG
Reactivity	Human;Mouse;Rat
Applications	IHC;IF;ELISA
Gene Name	RAB24
Protein Name	Ras-related protein Rab-24
Immunogen	Synthesized peptide derived from Rab 24 . at AA range: 90-170
Specificity	Rab 24 Polyclonal Antibody detects endogenous levels of Rab 24 protein.
Formulation	Liquid in PBS containing 50% glycerol, 0.5% BSA and 0.02% sodium azide.
Source	Polyclonal, Rabbit,IgG
Purification	The antibody was affinity-purified from rabbit antiserum by affinity-chromatography using epitope-specific immunogen.
Dilution	WB 1:500-2000 ,IHC: 1/100 - 1/300. ELISA: 1/10000.. IF 1:50-200
Concentration	1 mg/ml
Purity	≥90%
Storage Stability	-20°C/1 year
Synonyms	RAB24; Ras-related protein Rab-24
Observed Band	
Cell Pathway	Cytoplasm, cytosol . Membrane ; Lipid-anchor . Only about 20-25% is recovered in the particulate fraction. .
Tissue Specificity	Amygdala,Pancreas,Skin,Uterus,Whole embryo,
Function	function:May be involved in autophagy-related processes.,induction:By extensive retinoic acid treatment, in Ntera-2 teratoma cell line induced to differentiate into post-mitotic neurons (NTN2) (at protein level).,miscellaneous:The unusual Ser-67, instead of a conserved Gln in other family members, is the cause of low GTPase activity. As a result, the predominant nucleotide associated with the protein is GTP.,PTM:Isoprenylation is inefficient compared to other Rab family members.,similarity:Belongs to the small GTPase superfamily. Rab family.,subcellular location:Only about 20-25% is recovered in the particulate fraction.,subunit:Unlike other Rab family members, does not interact with GDP dissociation inhibitors (GDIs), including ARHGDIA and ARHGDIB.,

Nanjing BYabscience technology Co.,Ltd



Background	RAB24 is a small GTPase of the Rab subfamily of Ras-related proteins that regulate intracellular protein trafficking (Oikkonen et al., 1993 [PubMed 8126105]).[supplied by OMIM, Aug 2009],
matters needing attention	Avoid repeated freezing and thawing!
Usage suggestions	This product can be used in immunological reaction related experiments. For more information, please consult technical personnel.

Products Images



Immunohistochemical analysis of paraffin-embedded human Squamous cell carcinoma of lung. 1, Antibody was diluted at 1:200(4° overnight). 2, Tris-EDTA,pH9.0 was used for antigen retrieval. 3,Secondary antibody was diluted at 1:200(room temperature, 45min).