



# Rab 18 Polyclonal Antibody

<b>Catalog No</b>	BYab-16188
<b>Isotype</b>	IgG
<b>Reactivity</b>	Human;Mouse;Rat
<b>Applications</b>	WB;ELISA;IHC
<b>Gene Name</b>	RAB18
<b>Protein Name</b>	Ras-related protein Rab-18
<b>Immunogen</b>	The antiserum was produced against synthesized peptide derived from human RAB18. AA range:103-152
<b>Specificity</b>	Rab 18 Polyclonal Antibody detects endogenous levels of Rab 18 protein.
<b>Formulation</b>	Liquid in PBS containing 50% glycerol, 0.5% BSA and 0.02% sodium azide.
<b>Source</b>	Polyclonal, Rabbit,IgG
<b>Purification</b>	The antibody was affinity-purified from rabbit antiserum by affinity-chromatography using epitope-specific immunogen.
<b>Dilution</b>	WB 1:500-2000;IHC-p 1:50-300; ELISA 2000-20000
<b>Concentration</b>	1 mg/ml
<b>Purity</b>	≥90%
<b>Storage Stability</b>	-20°C/1 year
<b>Synonyms</b>	RAB18; Ras-related protein Rab-18
<b>Observed Band</b>	28kD
<b>Cell Pathway</b>	Apical cell membrane . Lipid droplet .
<b>Tissue Specificity</b>	Ubiquitous.
<b>Function</b>	function:Plays a role in apical endocytosis/recycling. May be implicated in transport between the plasma membrane and early endosomes.,similarity:Belongs to the small GTPase superfamily. Rab family.,tissue specificity:Ubiquitous.,
<b>Background</b>	The protein encoded by this gene is a member of a family of Ras-related small GTPases that regulate membrane trafficking in organelles and transport vesicles. Knockdown studies in zebrafish suggest that this protein may have a role in eye and brain development. Mutations in this gene are associated with Warburg micro syndrome type 3. Alternatively spliced transcript variants have been found for this gene. [provided by RefSeq, Jan 2012],

Nanjing BYabscience technology Co.,Ltd



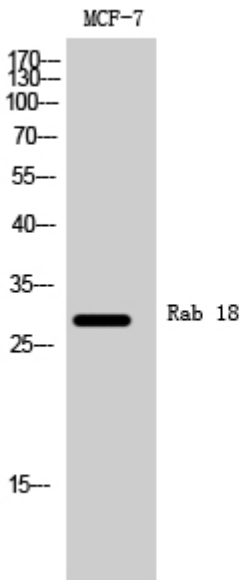
**matters needing attention**

Avoid repeated freezing and thawing!

**Usage suggestions**

This product can be used in immunological reaction related experiments. For more information, please consult technical personnel.

## Products Images



Western Blot analysis of MCF-7 cells using Rab 18 Polyclonal Antibody



Hu

Western blot analysis of lysates from MCF-7 and HUVEC cells, using RAB18 Antibody. The lane on the right is blocked with the synthesized peptide.

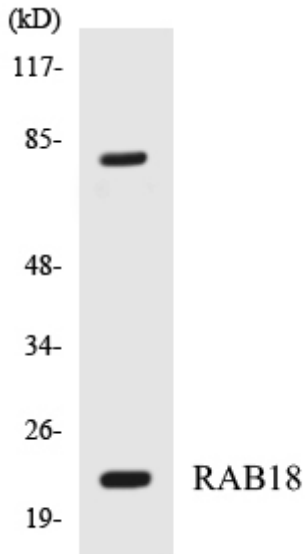


RAB18--

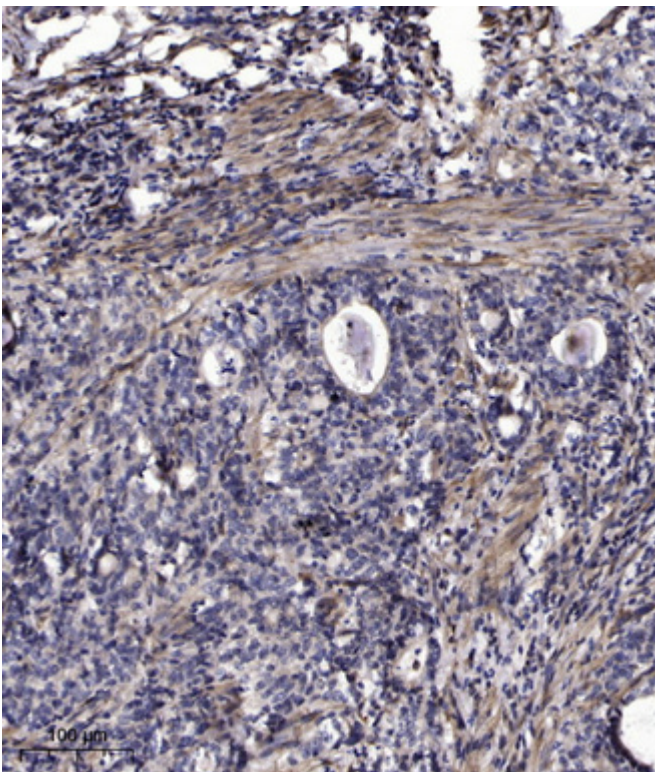
nce technology Co.,Ltd

025-5229-8998

监督电话: 15950492658



Western blot analysis of the lysates from HepG2 cells using RAB18 antibody.



Immunohistochemical analysis of paraffin-embedded human Gastric adenocarcinoma. 1, Antibody was diluted at 1:200(4° overnight). 2, Tris-EDTA,pH9.0 was used for antigen retrieval. 3,Secondary antibody was diluted at 1:200(room temperature, 45min).