



Oncogene TIM Polyclonal Antibody

Catalog No	BYab-16184
Isotype	IgG
Reactivity	Human;Mouse;Rat
Applications	WB;ELISA
Gene Name	ARHGEF5
Protein Name	Rho guanine nucleotide exchange factor 5
Immunogen	The antiserum was produced against synthesized peptide derived from human ARHGEF5. AA range:191-240
Specificity	Oncogene TIM Polyclonal Antibody detects endogenous levels of Oncogene TIM protein.
Formulation	Liquid in PBS containing 50% glycerol, 0.5% BSA and 0.02% sodium azide.
Source	Polyclonal, Rabbit,IgG
Purification	The antibody was affinity-purified from rabbit antiserum by affinity-chromatography using epitope-specific immunogen.
Dilution	Western Blot: 1/500 - 1/2000. ELISA: 1/20000. Not yet tested in other applications.
Concentration	1 mg/ml
Purity	≥90%
Storage Stability	-20°C/1 year
Synonyms	ARHGEF5; TIM; Rho guanine nucleotide exchange factor 5; Ephexin-3; Guanine nucleotide regulatory protein TIM; Oncogene TIM; Transforming immortalized mammary oncogene; p60 TIM
Observed Band	60kD
Cell Pathway	Cytoplasm . Nucleus . Cell projection, podosome .
Tissue Specificity	Ubiquitously expressed with highest levels in placenta. High levels are also found in colon, kidney, trachea, prostate, liver, pancreas, pituitary gland, thyroid gland and mammary gland. In fetal tissues, expressed at high levels in kidney, lung and liver (PubMed:15601624). Expressed at low levels in lung and heart (PubMed:14662653).
Function	similarity:Contains 1 DH (DBL-homology) domain.,similarity:Contains 1 PH domain.,similarity:Contains 1 SH3 domain.,tissue specificity:Mainly expressed in kidney, liver, pancreas, lung and placenta.,

Nanjing BYabscience technology Co.,Ltd



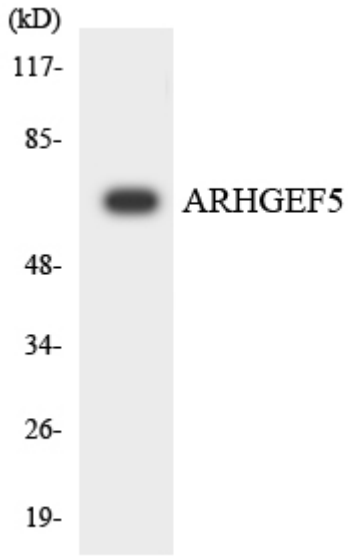
Background	Rho GTPases play a fundamental role in numerous cellular processes initiated by extracellular stimuli that work through G protein coupled receptors. The encoded protein may form a complex with G proteins and stimulate Rho-dependent signals. This protein may be involved in the control of cytoskeletal organization. [provided by RefSeq, Jul 2008],
matters needing attention	Avoid repeated freezing and thawing!
Usage suggestions	This product can be used in immunological reaction related experiments. For more information, please consult technical personnel.

Products Images



Western blot analysis of lysates from RAW264.7 cells, using ARHGEF5 Antibody. The lane on the right is blocked with the synthesized peptide.

ARHG5--



Western blot analysis of the lysates from K562 cells using ARHGEF5 antibody.