



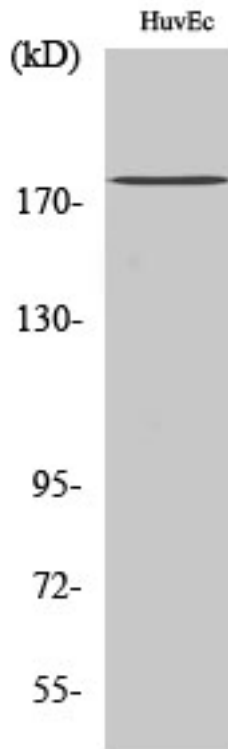
IQGAP3 Polyclonal Antibody

Catalog No	BYab-16179
Isotype	IgG
Reactivity	Human;Mouse;Rat
Applications	WB;ELISA;IHC
Gene Name	IQGAP3
Protein Name	Ras GTPase-activating-like protein IQGAP3
Immunogen	The antiserum was produced against synthesized peptide derived from human IQGAP3. AA range:107-156
Specificity	IQGAP3 Polyclonal Antibody detects endogenous levels of IQGAP3 protein.
Formulation	Liquid in PBS containing 50% glycerol, 0.5% BSA and 0.02% sodium azide.
Source	Polyclonal, Rabbit,IgG
Purification	The antibody was affinity-purified from rabbit antiserum by affinity-chromatography using epitope-specific immunogen.
Dilution	WB 1:500-2000;IHC-p 1:50-300; ELISA 2000-20000
Concentration	1 mg/ml
Purity	≥90%
Storage Stability	-20°C/1 year
Synonyms	IQGAP3; Ras GTPase-activating-like protein IQGAP3
Observed Band	180kD
Cell Pathway	cytosol,cell-cell junction,lateral plasma membrane,
Tissue Specificity	Embryonic kidney,
Function	similarity:Contains 1 CH (calponin-homology) domain.,similarity:Contains 1 Ras-GAP domain.,similarity:Contains 4 IQ domains.,
Background	similarity:Contains 1 CH (calponin-homology) domain.,similarity:Contains 1 Ras-GAP domain.,similarity:Contains 4 IQ domains.,
matters needing attention	Avoid repeated freezing and thawing!
Usage suggestions	This product can be used in immunological reaction related experiments. For more information, please consult technical personnel.

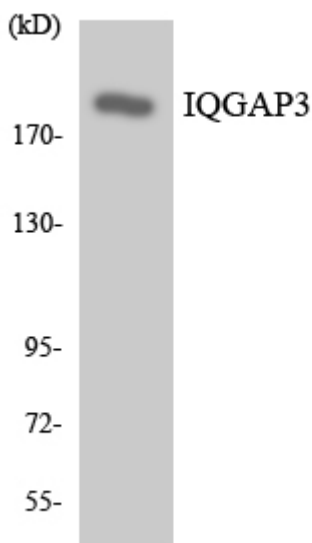
Nanjing BYabscience technology Co.,Ltd



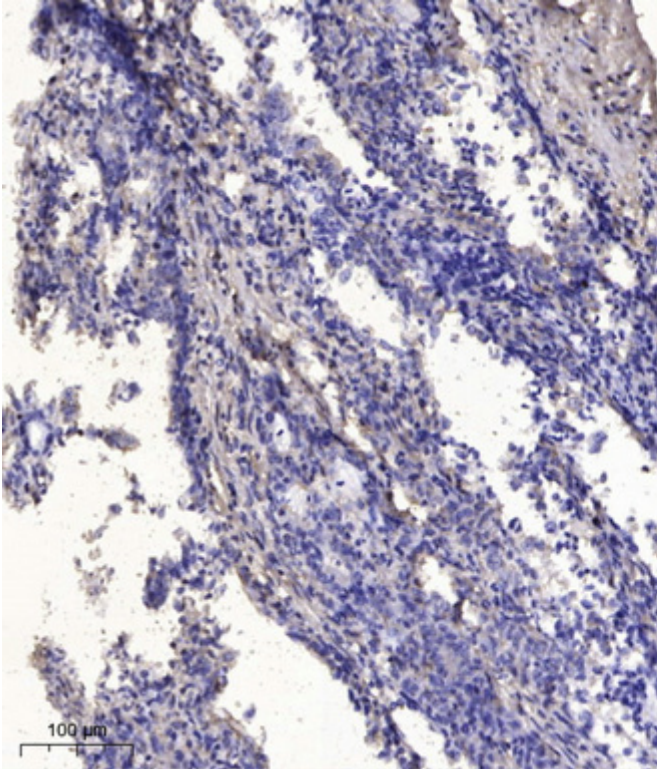
Products Images



Western Blot analysis of various cells using IQGAP3 Polyclonal Antibody diluted at 1:1000



Western blot analysis of the lysates from 293 cells using IQGAP3 antibody.



Immunohistochemical analysis of paraffin-embedded human Gastric adenocarcinoma. 1, Antibody was diluted at 1:200(4° overnight). 2, Tris-EDTA,pH9.0 was used for antigen retrieval. 3,Secondary antibody was diluted at 1:200(room temperature, 45min).