



IQGAP1 Polyclonal Antibody

Catalog No	BYab-16178
Isotype	IgG
Reactivity	Human;Mouse
Applications	WB;IHC
Gene Name	IQGAP1
Protein Name	Ras GTPase-activating-like protein IQGAP1
Immunogen	The antiserum was produced against synthesized peptide derived from human IQGAP1. AA range:247-296
Specificity	IQGAP1 Polyclonal Antibody detects endogenous levels of IQGAP1 protein.
Formulation	Liquid in PBS containing 50% glycerol, 0.5% BSA and 0.02% sodium azide.
Source	Polyclonal, Rabbit,IgG
Purification	The antibody was affinity-purified from rabbit antiserum by affinity-chromatography using epitope-specific immunogen.
Dilution	WB 1:500-2000;IHC-p 1:50-300
Concentration	1 mg/ml
Purity	≥90%
Storage Stability	-20°C/1 year
Synonyms	IQGAP1; KIAA0051; Ras GTPase-activating-like protein IQGAP1; p195
Observed Band	190kD
Cell Pathway	Cell membrane . Nucleus . Cytoplasm . Subcellular distribution is regulated by the cell cycle, nuclear levels increase at G1/S phase (PubMed:20883816). .
Tissue Specificity	Expressed in the placenta, lung, and kidney. A lower level expression is seen in the heart, liver, skeletal muscle and pancreas.
Function	domain:Regions C1 and C2 can either interact with nucleotide-free CDC42, or interact together, depending on the phosphorylation state of Ser-1443. When Ser-1443 is not phosphorylated, C1 and C2 interact, which prevents binding of nucleotide-free CDC42 and promotes binding of GTP-bound CDC42. Phosphorylation of Ser-1443 prevents interaction between C1 and C2, which opens the structure of the C-terminus and allows binding and sequestration of nucleotide-free CDC42 on both C1 and C2.,function:Binds to activated CDC42 but does not stimulate its GTPase activity. It associates with calmodulin. Could serve as an assembly scaffold for the organization of a multimolecular complex that would interface incoming signals to the reorganization of the actin cytoskeleton at the plasma membrane. May promote neurite outgrowth.,PTM:Phosphorylation of

Nanjing BYabscience technology Co.,Ltd



Ser-1443 by PKC prevents interaction between C1 and C2,

Background

IQ motif containing GTPase activating protein 1(IQGAP1) Homo sapiens This gene encodes a member of the IQGAP family. The protein contains four IQ domains, one calponin homology domain, one Ras-GAP domain and one WW domain. It interacts with components of the cytoskeleton, with cell adhesion molecules, and with several signaling molecules to regulate cell morphology and motility. Expression of the protein is upregulated by gene amplification in two gastric cancer cell lines. [provided by RefSeq, Jul 2008],

matters needing attention

Avoid repeated freezing and thawing!

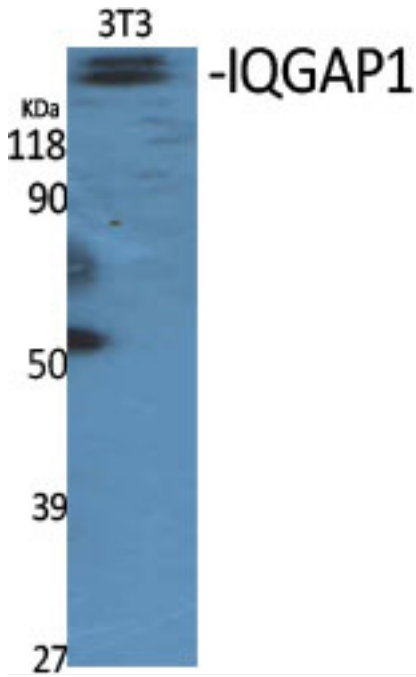
Usage suggestions

This product can be used in immunological reaction related experiments. For more information, please consult technical personnel.

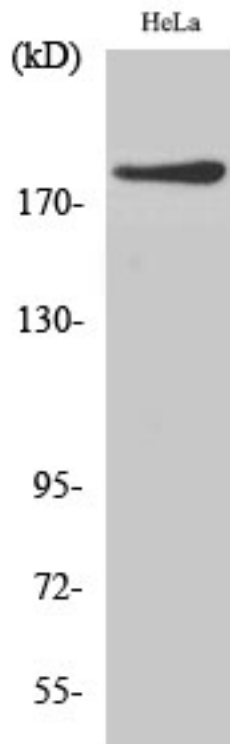
Nanjing BYabscience technology Co.,Ltd



Products Images

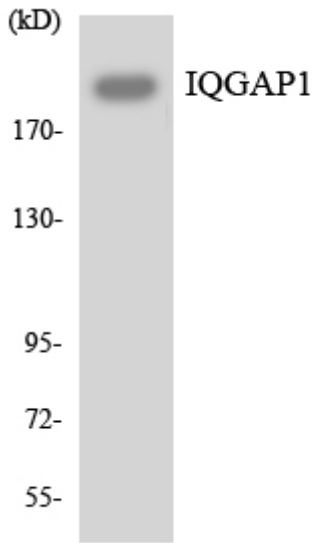


Western Blot analysis of various cells using IQGAP1
Polyclonal Antibody diluted at 1:1000

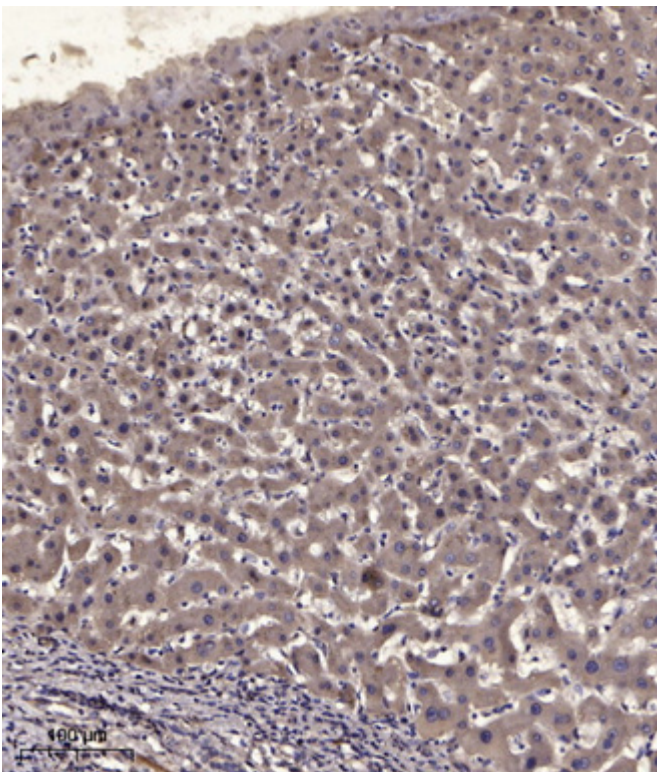


Western Blot analysis of HeLa cells using IQGAP1
Polyclonal Antibody diluted at 1:1000

Nanjing BYabscience technology Co.,Ltd



Western blot analysis of the lysates from K562 cells using IQGAP1 antibody.



Immunohistochemical analysis of paraffin-embedded human liver cancer. 1, Antibody was diluted at 1:200(4° overnight). 2, Tris-EDTA, pH9.0 was used for antigen retrieval. 3, Secondary antibody was diluted at 1:200(room temperature, 45min).