



# Gα i-3 Polyclonal Antibody

<b>Catalog No</b>	BYab-16172
<b>Isotype</b>	IgG
<b>Reactivity</b>	Human;Mouse;Rat
<b>Applications</b>	WB;ELISA
<b>Gene Name</b>	GNAI3
<b>Protein Name</b>	Guanine nucleotide-binding protein G(k) subunit alpha
<b>Immunogen</b>	The antiserum was produced against synthesized peptide derived from human GNAI3. AA range:31-80
<b>Specificity</b>	Gα i-3 Polyclonal Antibody detects endogenous levels of Gα i-3 protein.
<b>Formulation</b>	Liquid in PBS containing 50% glycerol, 0.5% BSA and 0.02% sodium azide.
<b>Source</b>	Polyclonal, Rabbit,IgG
<b>Purification</b>	The antibody was affinity-purified from rabbit antiserum by affinity-chromatography using epitope-specific immunogen.
<b>Dilution</b>	Western Blot: 1/500 - 1/2000. ELISA: 1/40000. Not yet tested in other applications.
<b>Concentration</b>	1 mg/ml
<b>Purity</b>	≥90%
<b>Storage Stability</b>	-20°C/1 year
<b>Synonyms</b>	GNAI3; Guanine nucleotide-binding protein G(k) subunit alpha; G(i) alpha-3
<b>Observed Band</b>	41kD
<b>Cell Pathway</b>	Cytoplasm . Cell membrane ; Lipid-anchor . Cytoplasm, cytoskeleton, microtubule organizing center, centrosome . Localizes in the centrosomes of interphase and mitotic cells. Detected at the cleavage furrow and/or the midbody. .
<b>Tissue Specificity</b>	Liver,
<b>Function</b>	function:Guanine nucleotide-binding proteins (G proteins) are involved as modulators or transducers in various transmembrane signaling systems. G(k) is the stimulatory G protein of receptor-regulated K(+) channels.,similarity:Belongs to the G-alpha family. G(i/o/t/z) subfamily.,subunit:G proteins are composed of 3 units; alpha, beta and gamma. The alpha chain contains the guanine nucleotide binding site. Interacts with GPSM1.,
<b>Background</b>	Guanine nucleotide-binding proteins (G proteins) are involved as modulators or transducers in various transmembrane signaling pathways. G proteins are composed of 3 units: alpha, beta and gamma. This gene encodes an alpha

Nanjing BYabscience technology Co.,Ltd



subunit and belongs to the G-alpha family. Mutation in this gene, resulting in a gly40-to-arg substitution, is associated with auriculocondylar syndrome, and shown to affect downstream targets in the G protein-coupled endothelin receptor pathway. [provided by RefSeq, Jun 2012],

**matters needing attention**

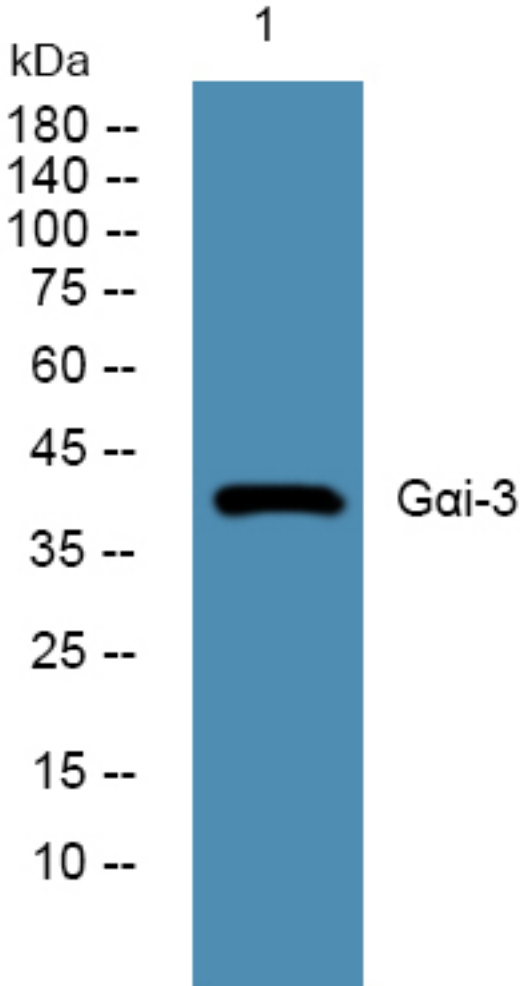
Avoid repeated freezing and thawing!

**Usage suggestions**

This product can be used in immunological reaction related experiments. For more information, please consult technical personnel.



## Products Images



Western blot analysis of lysates from K562 cells,  
primary antibody was diluted at 1:1000, 4° over night